

Film-Tech

The information contained in this Adobe Acrobat pdf file is provided at your own risk and good judgment.

These manuals are designed to facilitate the exchange of information related to cinema projection and film handling, with no warranties nor obligations from the authors, for qualified field service engineers.

If you are not a qualified technician, please make no adjustments to anything you may read about in these Adobe manual downloads.

www.film-tech.com

Dolby[®] CAT. NO. 113C

**Automation Interface
for Model CP50**

Installation Instructions

INSTALLATION INSTRUCTIONS

FOR

CAT NO.113C

Dolby Laboratories Incorporated

U.S.A. 100 Potrero Avenue, San Francisco, CA 94103
Tel: 415-558-0200; Fax: 415-863-1373; Telex 34409

U.K. Wootton Bassett, Wiltshire SN4 8QJ
Tel: 0793-842100; Fax 0793-842101; Telex 44849

WARRANTY INFORMATION: Equipment manufactured by Dolby Laboratories is warranted against defects in materials and workmanship for one year from the date of purchase. There are no other express or implied warranties and no warranty of merchantability or fitness for a particular purpose. During the warranty period Dolby Laboratories will repair or, at its option, replace components which prove to be defective, provided the unit is shipped, prepaid, to the manufacturer directly or via an authorized distributor. Defects caused by modifications, misuse or accidents, and any further damage caused by inadequate packing for service return, are not covered by this warranty.

Dolby Laboratories' obligation is restricted to the repair or replacement of defective parts and under no circumstances shall Dolby Laboratories be liable for any other damage, either direct or consequential.

All requests for repairs or information should include the unit serial number to ensure rapid service.

Dolby is a registered trademark of Dolby Laboratories Licensing Corporation.

©1987 Dolby Laboratories

Dolby® Cat. No. 113C Automation Interface Module for the Dolby CP50 Cinema Processor

Dolby Laboratories now offers an improved retrofit control logic board for the 6,000 Dolby Stereo CP50 cinema processors in operation around the world. The Cat. No. 113C gives the CP50 one-button format selection, automation interface, adjustable bypass level and power supply status.

One-button Format Selection

The Cat. No. 113C replaces the earlier Cat. No. 113 Automation Interface Module or the Cat. No. 112 Manual Switch Card. The Cat. No. 113C now offers the operator complete, direct manual or automated control of the entire theatre sound system.

Automation Interface

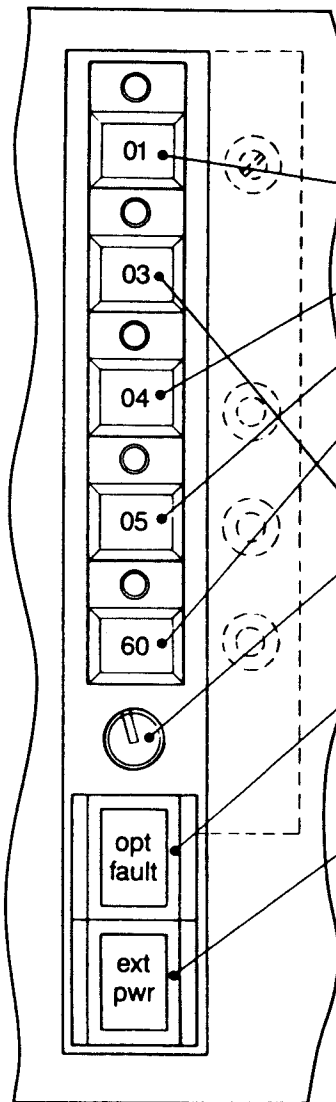
Since the Cat. No. 113C interfaces directly with theatre automation equipment, additional customer-supplied interface hardware is no longer needed. The system may be operated manually from the cinema processor, through an automation system, or by remote control. The non-sync format for intermission music has automatic fade-in and fade-out. The power-up format is user-selectable.

Adjustable Bypass Level

If a speaker or power amp fails during a show, the Cat. No. 113C bypass switch can disable the current format and feed a mono signal to all three front channels. The bypass fader allows immediate manual adjustment of speaker volume. When linked to an emergency power supply, the Cat. No. 113C can activate auxiliary power and indicate its status.

Power Supply Status Lights

Three LEDs at the right front of the Cat. No. 113C monitor main or



User-operated features

The following switches may be operated by automation equipment, by remote control or by manual selection. Indicator lights show format in use:

Mono.

Dolby Stereo optical with surround.

Reserved for future film formats.

Non-sync carries up to four channels of intermission tape music.

These controls can be operated only from the front panel:

Bypass Fader—gain knob for manual audio bypass mode.

Dolby Stereo optical without surround.

Optical Fault Bypass Switch—When any element following the pre-amps fails, this switch is used to bypass circuitry in the CP50, feed a mono signal to the front three speakers, and activate the Bypass Fader.

External Power Supply—this switch activates auxiliary power source (if connected).

Features on front of Cat. No. 113C, behind CP50 front panel:

LEDs—Indicate power supply status for -12V, +12V, and +24V power rails.

Trim pot—sets non-sync volume.

auxiliary power on +12V, -12V, and +24V rails.

Installation

The Cat. No. 113C plugs into the Cat. No. 112 board slot of the CP50. Installation should be done by theatre equipment supplier or other trained personnel to ensure correct interface with theatre automation equipment and emergency power supply. The jumpers for power-up format and rapid fade-out should be set during installation.



Dolby Laboratories Inc.,
100 Potrero Avenue, San Francisco, CA 94103-4813.
Tel: 415-558-0200 • Fax: 415-863-1373

Wootton Bassett, Wiltshire SN4 8QJ.
Tel: 01793-842100 • Fax: 01793-842101

"Dolby" and the double-D symbol are trademarks of Dolby Laboratories Licensing Corporation.

CAT NO. 113C INSTALLATION INSTRUCTIONS

Introduction

The Cat. No. 113C replaces the Cat. No. 113 Automation Interface or the Cat. No. 112 Manual Switch card. Its various features are outlined in the attached brochure. A CP50 equipped with a Cat. No. 113C can be operated from the front panel or by a customer supplied remote station. The Cat. No. 113C uses a different and simpler automation interface than other CP50 automation schemes. It is therefore **ESSENTIAL** that all existing automation or remote control wiring be disconnected from the CP50 before installation of the Cat. No. 113C. Failure to do this will cause improper operation and may damage the Cat. No. 113C.

Please see the enclosed interface drawing for wiring details.

Label Installation

1. Disconnect AC power from the CP50.
2. Remove the existing Cat. No. 112 or Cat. No. 113.
3. Remove all wiring from the automation barrier strips at the upper left of the CP50 backplane. Also remove all wiring from the non-sync/mag inputs. These steps prevent interference with the new automation system and facilitate installation of the new backplane label.
4. Install the adhesive-backed backplane label as shown on the interface drawing.
5. Install the new adhesive-backed front panel label after cleaning the front door thoroughly to ensure that the label will remain attached. Cleaning with detergent or window cleaner followed by rubbing alcohol is recommended. Extra labels are available.

Do not reconnect wiring to the barrier strips at this time.

Setting Programming Jumpers (refer to the set-up drawing on page 7)

1. Locate suitcase link **J103** on the Cat. No. 113C board and set this link for the desired power-up format.
2. Set **Non-Sync Fade-Out** link as needed. The links are identified as **J101** and **J102** on the Cat. No. 113C board.

With the link in either position, selecting **NON-SYNC** (format 60) will cause the film sound to turn off and the non-sync music to fade up. If the link is in location **J101**, selecting a film sound format will immediately switch the CP50 to film sound without fading the music down. If the link is in location **J102**, selecting a film sound format will cause the music to fade down first.

Pre-setting Non-Sync Level

1. Turn the **NON-SYNC LEVEL** control on the Cat. No. 113C fully counter-clockwise to avoid possible loudspeaker damage.

Installation

1. Install the Cat. No. 113C.
2. Restore power to the CP50 and check that the three LEDS indicating proper rail voltages are lit.
3. Close the front door of the unit.
4. Check that the front panel switches operate normally and do not rub against the door or front panel label. The LED in each switch should light as you push the switch.

Automation Interface (refer to the installation drawing on page 8)

The Cat. No. 113C requires pulsed logic control signals for each format. Continuous contact closures are not satisfactory as they override the operation of the front panel switches, preventing the operator from overriding the external automation commands. The same thing is true of the CP55 and CP200 remote control inputs.

Please refer to the CP50/Cat. No. 113C interface drawing. Check the outputs of the external automation system to see if any voltage is present. The automation system should provide contact closures isolated from any external voltage source. Format selection should be by a normally open circuit with a pulsed connection to ground. If relays are used, the contacts should be of the dry circuit type. Contacts of this type are designed to handle very small currents, where no arcs will occur to clean oxides and other contamination off the contact surfaces. Other types of contacts will not be reliable. Transistor switches are satisfactory as well; the voltage at the control terminals is +12 VDC when the circuit is open; a few milliamperes flow through the closed circuit.

Because of the automatic fade-out of music after a film format has been selected, selection should occur 6 or 7 seconds before douser opening. This gives the Cat. No. 113C time to fade out the music and switch to film sound. The automation system should therefore furnish an early contact closure. If the film format is not selected until the actual start of the feature, the film sound will be muted for the first few seconds. When NON-SYNC (format 60) is selected at the end of the film, the music automatically fades up.

Providing this early contact closure may be easy or difficult depending on the type of automation equipment and your familiarity with it. For instance, Rank automation and Kelmar Maxi 10s are easy to get early cues from; others may require custom interfaces or modification. No unusual timing is required at the end of the show; fade-up of intermission music begins as soon as the NON-SYNC format is selected.

If it is impossible to provide the early startup contact closure, the fadeout feature can be defeated by a suitcase link **J101** on the Cat. No. 113C card. See the set-up drawing on page 7. In this case film format selection can occur simultaneously with douser opening.

After connecting your automation system to the CP50/Cat. No. 113C, please confirm that all formats operate correctly from both remote and front panel controls before proceeding.

Non-Sync Level Adjustment

Connect non-sync inputs as shown on the installation drawing. You may use any or all channels. Left and Right or Center and Surround are the most frequently used.

Level control is provided on the front edge of the Cat. No. 113C card. This control is independent of the main fader and a satisfactory level needs to be established during installation.

Final Setup

1. Install a Cat. No. 85 pink noise generator in the Cat. No. 110L slot as described in the CP50 manual. Confirm that the Left, Center, Right, and Surround channels operate satisfactorily.
2. Turn the Non-Sync level control fully counter-clockwise. Turn on the Non-Sync source. Adjust the level control for a satisfactory level with the house fader at its normal position.

Bypass Level Adjustment

1. Play a typical Dolby Stereo film; "Jiffy" or "listen..." are good films to use for this adjustment. Set the house fader for normal playback level.
2. Turn the Bypass fader fully counter-clockwise.
3. Turn the Cat. No. 108 left and right bypass controls fully clockwise.
4. Press the **Optical Fault/Bypass** switch.
5. Adjust the Bypass fader for a playback level equivalent to that provided by normal operation.

NOTE: You should have signal from Left, Center and Right loudspeakers when in Bypass.

In some instances you may need to set the Cat. No. 108 bypass adjustments for less than full output to achieve a satisfactory adjustment range on the bypass fader.

External Power

The use of an external power supply is unchanged from the normal CP50 installation. The current required is not significantly different with the Cat. No. 113C installed.

Mono Level Adjustment

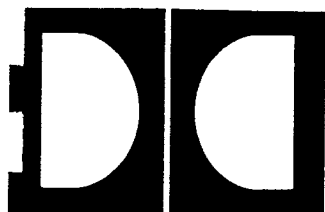
This adjustment allows a theater to play mono previews and Dolby Stereo films back-to-back without changing the house fader setting.

The best practical approach to this adjustment is as follows:

- 1) Play a typical reel of a Dolby Stereo film. Set the CP50 to **format 04, Dolby Stereo**. Adjust the house fader for a satisfactory playback level.
- 2) Set the CP50 to **format 01, mono**. Play typical previews. Without changing the house fader setting, adjust the mono trimpot on the Cat. No. 117 for a satisfactory playback level.

In some cases you may not be able to adjust the mono level to a low enough setting. If this is the case, see Dolby Field Bulletin #152 at the back of this manual, perform the modification outlined in it, and repeat steps 1) and 2), above.

If you experience problems in installing or using the Cat. No. 113C, please call Dolby Laboratories for assistance. In the U.S.A., the telephone number is (415) 558-0200. Outside of the U.S.A., contact your dealer.



Dolby Laboratories Inc

Field Bulletin No. 152

CP50 MONO OUTPUT LEVEL ADJUSTMENT RANGE

- | | |
|-------------------------------------|---------------------------------------------|
| <input type="checkbox"/> | Modification Urgent |
| <input type="checkbox"/> | Modification Recommended |
| <input checked="" type="checkbox"/> | Modification Required if Problem is Present |
| <input type="checkbox"/> | Modification for Special Applications |

Problem: The mono level pot located on the Cat. No. 117 or Cat. No. 111 card may not have enough range of adjustment to play monaural films (particularly previews) at the same fader setting as Dolby Stereo films. With the pot turned full down, these films play too loudly.

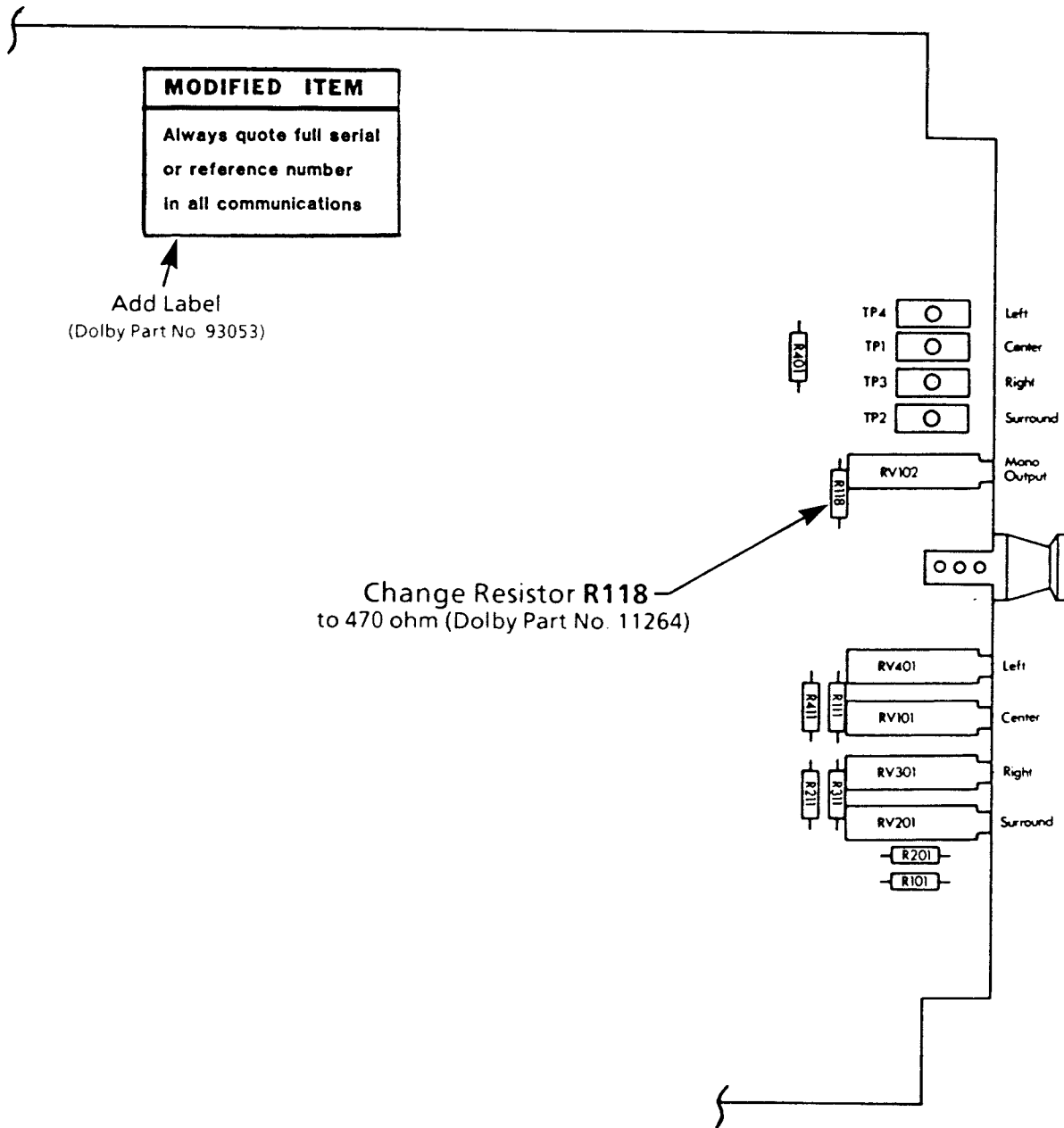
- Modification:**
1. Switch power to the CP50 OFF.
 2. Remove the Cat. No. 117 or 111 output card.
 3. Locate resistor R118 on the card (see figure).
 4. Remove it and replace it with a 470 ohm resistor.
 5. Attach the yellow "Modified Item" label to the card.
 6. Plug the card back into the CP50 and turn power ON.

- Adjustment:**
1. Set the mono level pot to minimum (full counterclockwise).
 2. Set the CP50 to Dolby Stereo (Format 04 if using a Cat. No. 113C).
 3. Run a Dolby Stereo film with the fader set to your standard setting for a typical listening level.
 4. Set the CP50 to mono (Format 01 if using a Cat. No. 113C).
 5. Without re-adjusting the fader, run a typical monaural preview and adjust the mono level pot to achieve a satisfactory playback level.

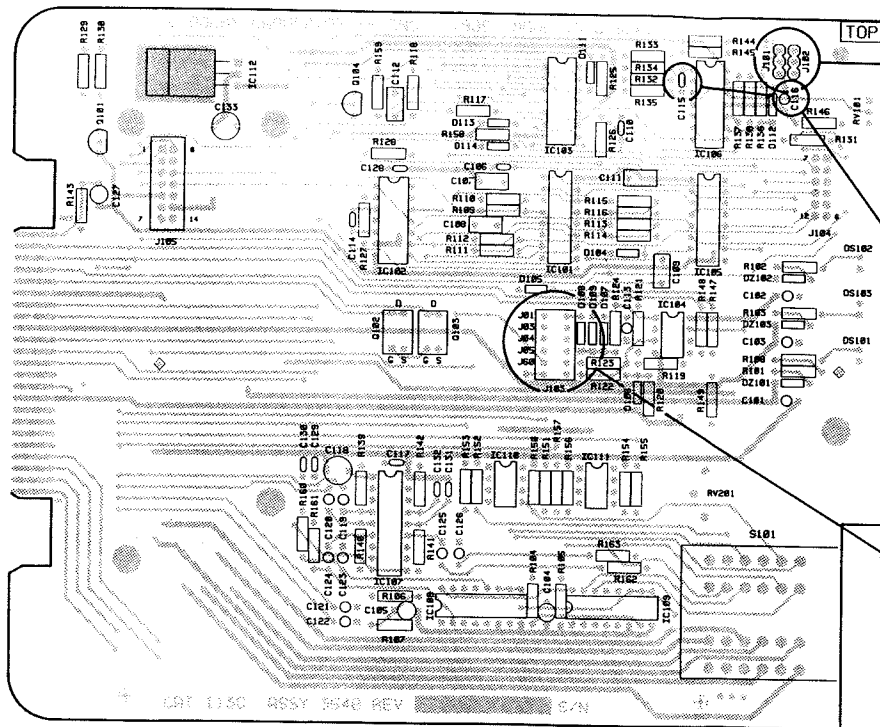
Technical Questions: Dolby Laboratories, San Francisco: 415-558-0200, Sam Chavez or George Douglas
 Dolby Laboratories, London: 01-720-1111, David Watts or Dion Hanson

Field Bulletin No. 152
Page Two

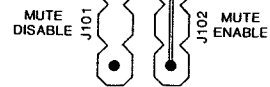
Cat. No. 117/111 Modification:



Change Resistor R118
to 470 ohm (Dolby Part No. 11264)



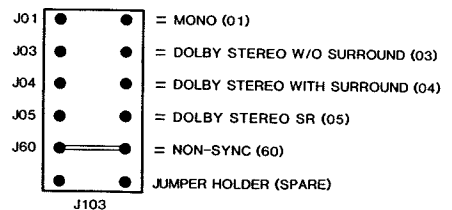
NON-SYNC FADE



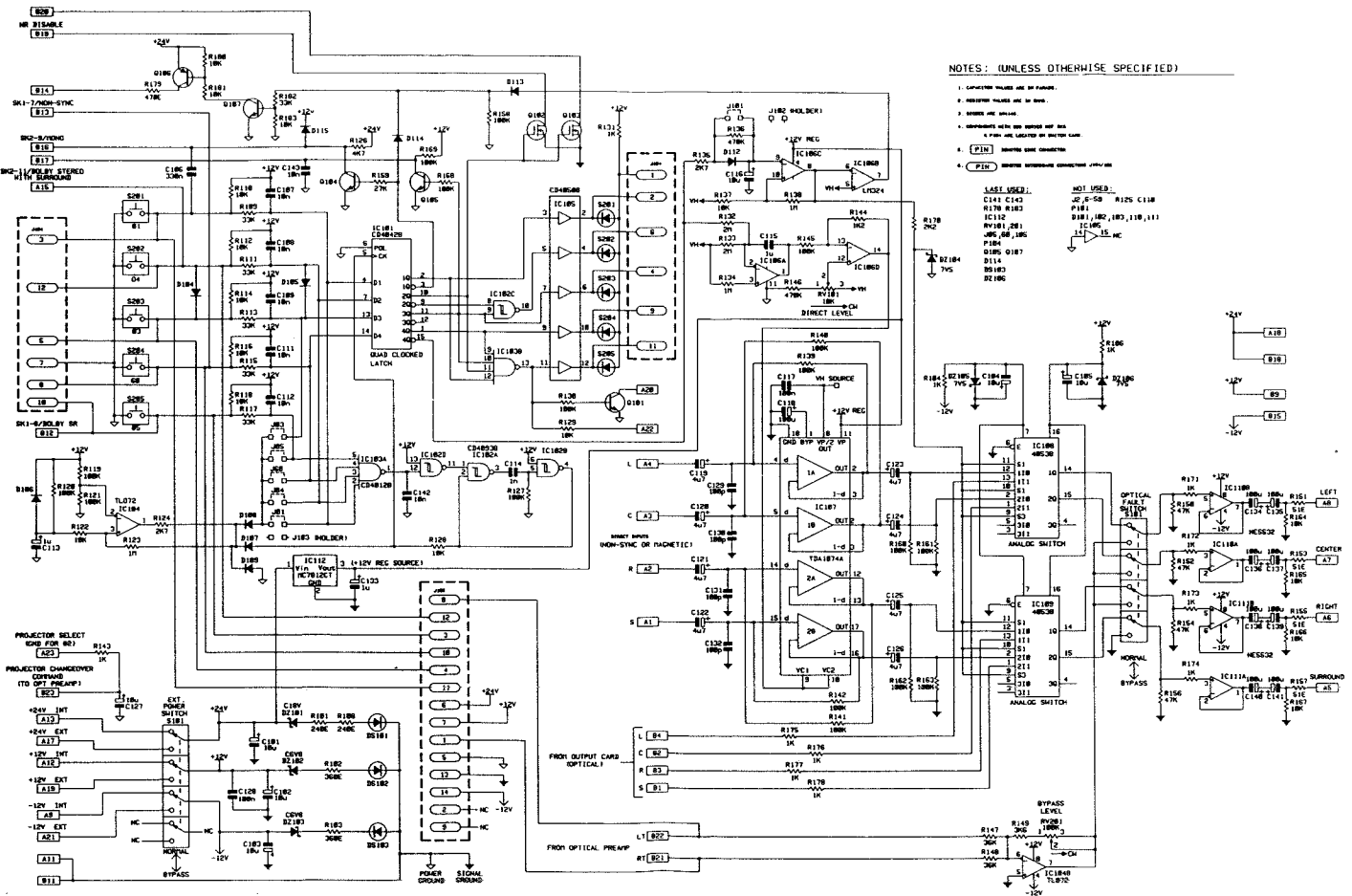
NON-SYNC FADE TIME CONSTANTS		
TIME(seconds)	C115(non-polar)	C116(tantalum)
* 5	1uF	10uF
10	2.2uF	22uF
2.5	0.47uF	4.7uF

* Non-Sync fade time constants can be altered from present values by proportionally changing C115 & C116. 2 typical examples are listed in the table above.

POWER UP STATE



Cat. No. 113C Set-Up
DWG A3A3644 REV B



NOTES: (UNLESS OTHERWISE SPECIFIED)

- 1. COMPONENT VALUES ARE IN PARENTS.
- 2. COMPONENT VALUES ARE IN PARENTS.
- 3. UNLESS OTHERWISE SPECIFIED.
- 4. COMPONENTS ARE TO BE ORDERED BY THE PART NUMBER LISTED IN THE PARTS LIST.
- 5. PIN 1 IS THE GROUND CONNECTION.

LAST USED:
 C141 C143
 R170 R183
 IC110
 R181 R182, 183, 110, 111
 IC106
 P104
 Q105 Q107
 D114
 B103
 B102

NOT USED:
 J2 J5-50 R125 C118
 P101
 IC108
 P103
 Q106 Q107
 D114
 B103
 B102

Cat. No. 113C Automation Interface
 A1CS548 REV 07