

Film-Tech

The information contained in this Adobe Acrobat pdf file is provided at your own risk and good judgment.

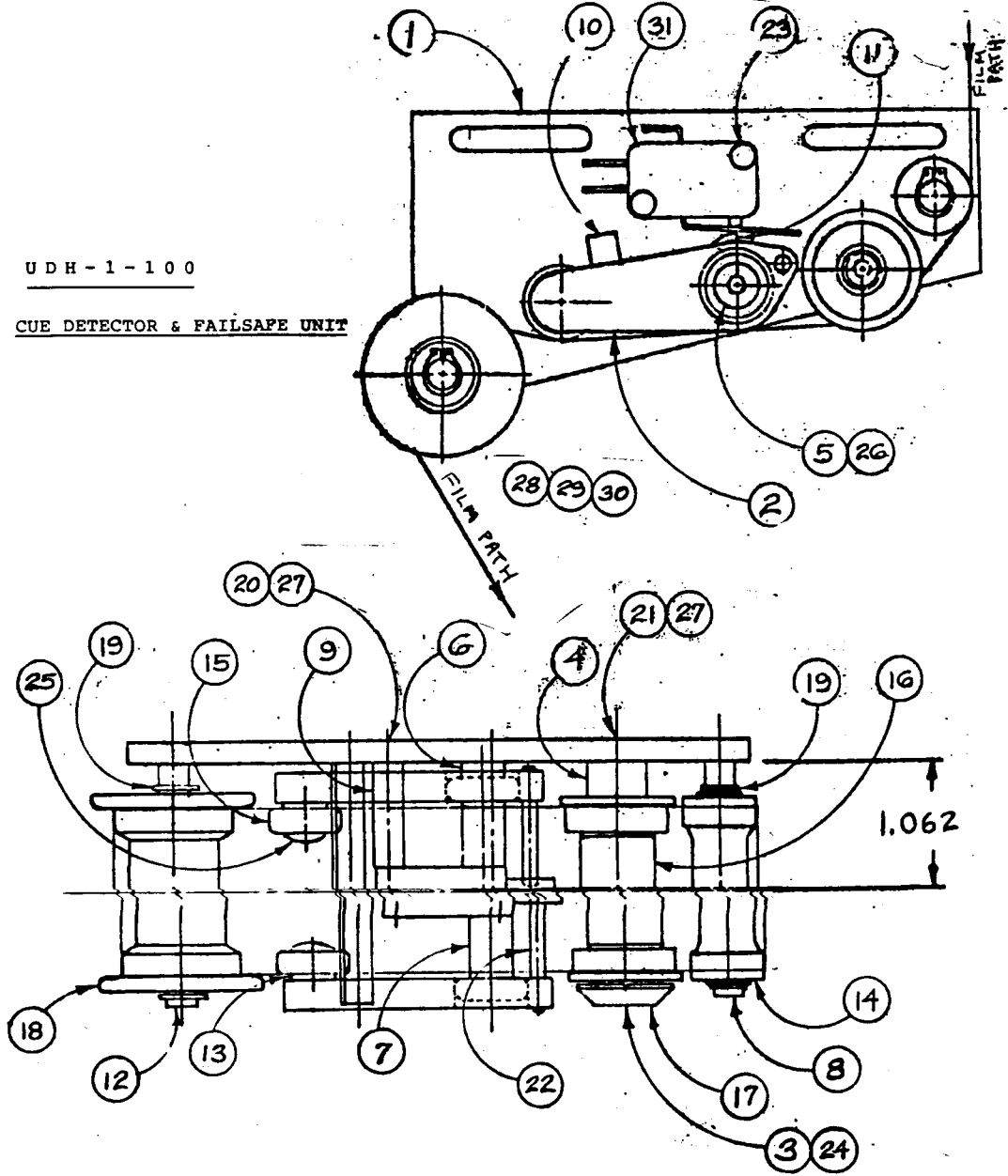
These manuals are designed to facilitate the exchange of information related to cinema projection and film handling, with no warranties nor obligations from the authors, for qualified field service engineers.

If you are not a qualified technician, please make no adjustments to anything you may read about in these Adobe manual downloads.

www.film-tech.com

UDH-1-100

CUE DETECTOR & FAILSAFE UNIT



UDH-1-100
LIST OF MATERIALS

ITEM NO.	PART NO.	QTY.	REQ.	DESCRIPTION
--	UDH-1-100	X		UNIVERSAL CUE DETECTOR - FAILSAFE ASSY.
1	UDH-1-101	1		BASE PLATE
2	UDH-1-102	2		FAILSAFE ARM
3	UDH-1-103	1		CUE DETECTOR STUD
4	UDH-1-104	1		INSULATING SPACER
5	UDH-1-105	1		FAILSAFE ARM SHAFT
6	UDH-1-106-1	1		FAILSAFE ARM SHAFT INNER SPACER
7	UDH-1-106-2	2		FAILSAFE ARM SHAFT CENTER SPACER
8	UDH-1-107	1		GROUND ROLLER SHAFT
9	UDH-1-103	2		FAILSAFE SWITCH STANDOFF
10	UDH-1-109	1		ARM UPPER LIMIT STOP
11	UDH-1-111	1		ARM LOWER LIMIT STOP
12	UDH-1-119	1		IDLER ROLLER SHAFT
13	VDH-4-97	2		FAILSAFE ARM BEARING SPACER
14	CDH-1-35	1		GROUND ROLLER
15	R422/1W	4		BALL BEARING (NTN OR EQUIV.)
16	PCD-751	1		BEARING SPACER
17	PCD-754	1		END CAP
18	720336	1		FILM BY-PASS ROLLER WITH BALL BEARINGS
19	5100-25 S PF	4		EXTERNAL RETAINING RING (WALDES TRUARC)
20	4-40 UNC X 3/8	2		FLAT HEAD CAP SCREW (ALLEN)
21	8-32 UNC X 1/2	5		FLAT HEAD CAP SCREW (ALLEN)
22	1/8 DIA. X.1	2		STANDARD DOWEL PIN (ALLMETAL)
23	4-40 UNC X 5/8	2		PHILLIPS PAN HEAD MACHINE SCREW (ALLMETAL)
24	8-32 UNC X 3/8	1		SOCKET HEAD CAP SCREW (ALLEN)
25	10-32 UNF X 1/2	2		BUTTON HEAD CAP SCREW (ALLEN)
26	10-32 UNF X 1/4	1		BUTTON HEAD CAP SCREW (ALLEN)
27	290	A.R.		ADHESIVE (LOCITE)
28	3-32 UNC X 3/8	2		PHILLIPS PAN HEAD MACHINE SCREW (ALLMETAL)
29	#8	2		SPLIT LOCK WASHER (ALLMETAL)
30	#8	2		STD. PATTERN FLAT WASHER (ALLMETAL)

XAK 102 NEW GND ROLLERS