


FILM-TECH

THE INFORMATION CONTAINED IN THIS ADOBE ACROBAT PDF FILE IS PROVIDED AT YOUR OWN RISK AND GOOD JUDGMENT.

THESE MANUALS ARE DESIGNED TO FACILITATE THE EXCHANGE OF INFORMATION RELATED TO CINEMA PROJECTION AND FILM HANDLING, WITH NO WARRANTIES NOR OBLIGATIONS FROM THE AUTHORS, FOR QUALIFIED FIELD SERVICE ENGINEERS.

IF YOU ARE NOT A QUALIFIED TECHNICIAN, PLEASE MAKE NO ADJUSTMENTS TO ANYTHING YOU MAY READ ABOUT IN THESE ADOBE MANUAL DOWNLOADS.

WWW.FILM-TECH.COM

	TITLE Replacing the DTS-6AD Power Supply Harness		NUMBER TN-F467	REV A	PAGE 1 of 4
	DEPARTMENT Customer Service	CREATED BY: Karen Hultgren	EFFECTIVE DATE February 21, 2006	APPROVED BY: Mike B. Smith	

This technical notice describes how to replace the DTS-6AD power supply harness.

Required Items

- Harness assembly for DTS-6AD power supply, part # 9022D75900A
- *DTS-6AD Cinema Processor Installation and Operation Manual*, Document #9301D6AD0002/10
- Ultra Fine Sandpaper, 600 Ultra Fine grain (For example: 3M413Q)
- #2 Phillips head screw driver
- Compressed air source



Caution: You will be working with unshielded power supplies in this procedure. Both the main power cable and auxiliary power cables must be disconnected before opening the unit.

Instructions

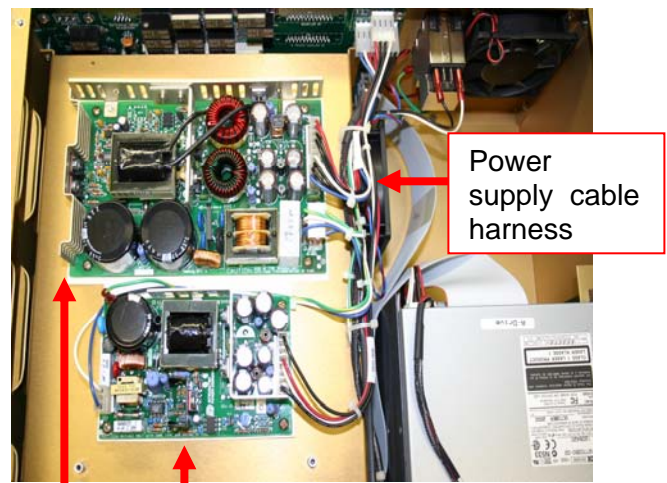
Disconnect Power Supply Harness

The 6AD must be removed from the rack to gain access to the power supply harness.

1. Prior to removing the 6AD, label all cables so they can be reconnected later to the same locations.
2. Remove all cables from the DTS-6AD unit.
3. Place the DTS-6AD on a flat and stable work surface with good lighting.
4. Remove the top cover. Save all the screws.
5. The power supply boards and harness are located under the cage. Remove the four screws securing the cage. Save all the screws.



Before the cage is removed



Power supply boards

Power supply cable harness



TITLE
**Replacing the DTS-6AD
Power Supply Harness**

NUMBER
TN-F467

REV
A

PAGE
2 of 4

DEPARTMENT
Customer Service

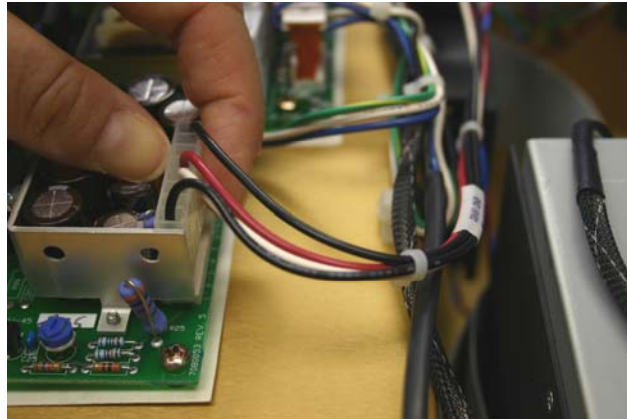
CREATED BY:
Karen Hultgren

EFFECTIVE DATE
February 21, 2006

APPROVED BY:
Mike B. Smith

6. Once the screws are removed, lift off the cage to access the power supply boards.
7. Carefully disconnect the harness by grasping the white connector and pulling up.

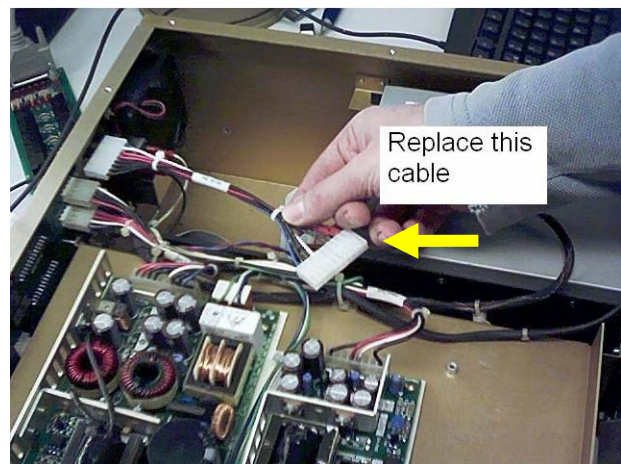
Grasp the connector. Be aware that some may be difficult to remove.



Do not pull on the wires!



8. Remove the power supply harness assembly. Several tie-wraps may need to be cut to free the cable.





TITLE
**Replacing the DTS-6AD
Power Supply Harness**

NUMBER
TN-F467

REV
A

PAGE
3 of 4

DEPARTMENT
Customer Service

CREATED BY:
Karen Hultgren

EFFECTIVE DATE
February 21, 2006

APPROVED BY:
Mike B. Smith

Clean the Unit

1. Clean off all the connector pins using ultra-fine sand paper. (See the top photo.)

Note:

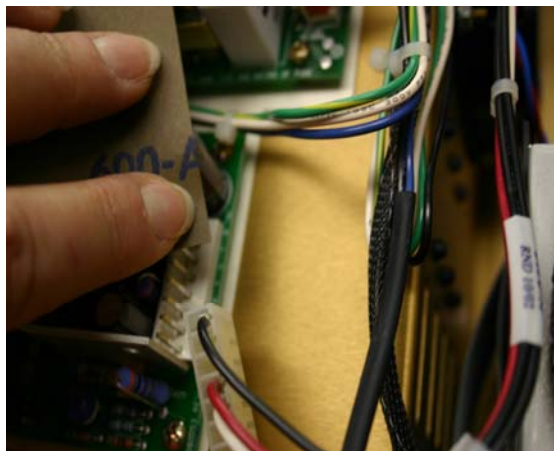
Do not use solvents to clean the pins.

2. Rub each connector until all discoloration or oxidization is removed.

Note:

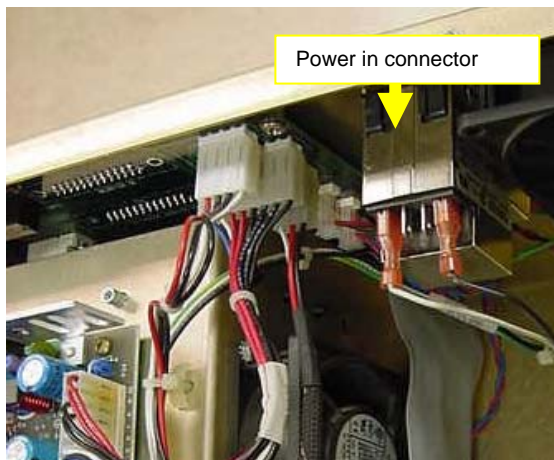
The middle photo shows an example of discolored connector pins.

3. After cleaning off all the pins, use compressed air to blow the fine particles of dust and dirt off the contacts before connecting in the new harness.




Reconnect the New Harness

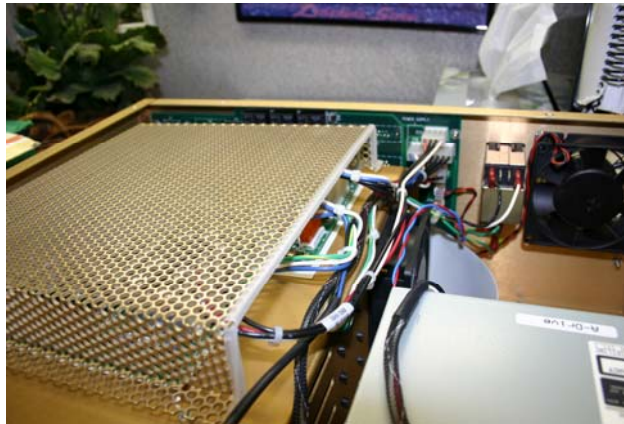
1. Reconnect the new harness only after all the pins have been cleaned. Avoid touching the pins with your fingers.
2. Inspect the two rear panel input spade lugs to make sure they are clean and the wires are securely connected. The wires should not wiggle in the lug. If they are loose, with the spade lug off the connector, squeeze the spade lug slightly with pliers to make it fit more snugly.



Caution: Inspect one wire at a time and be sure to reconnect each wire back into its proper location.

	TITLE Replacing the DTS-6AD Power Supply Harness		NUMBER TN-F467	REV A	PAGE 4 of 4
	DEPARTMENT Customer Service	CREATED BY: Karen Hultgren	EFFECTIVE DATE February 21, 2006	APPROVED BY: Mike B. Smith	

3. Install the power cage using the saved screws.



4. Re-attach the unit's top cover and connect the unit to power. While still on the work bench, power on the DTS-6AD and verify that the front panel lights up and displays the format screen.
5. Power off the unit and reconnect it to the system (sound rack). Be careful when reconnecting the unit. Be aware that most of the rear panel connectors look the same, and a wrong connection may damage the DTS-6AD.



Caution: If the Status/Control connector is accidentally connected to the DTS-6AD "Monitor In" or "To Power Amps" connectors, it may damage the unit.

6. Power on the DTS-6AD and verify that the unit boots to the standard operation.
7. Run the internal pink noise test (see Section 7 in *DTS-6AD Cinema Processor Installation and Operation Manual*, Document #9301D6AD0002/10) to verify that all channels are audible on the monitor and in the auditorium.
8. Run pink noise film to verify that the projector's sound source (see Section 8 in the DTS-6AD Manual, referenced above) is audible on the monitor and in the auditorium.
9. Discard the old cable harness.

Note: Please email or call DTS Customer Service to report the serial number of the DTS-6AD with the new harness.

Please refer any questions to DTS Customer Service

Tel: +818-706-3525 or toll free in the USA (800) 959-4109

Fax: +818-879-2746

Email: cinematech@dts.com