

Film-Tech

The information contained in this Adobe Acrobat pdf file is provided at your own risk and good judgment.

These manuals are designed to facilitate the exchange of information related to cinema projection and film handling, with no warranties nor obligations from the authors, for qualified field service engineers.

If you are not a qualified technician, please make no adjustments to anything you may read about in these Adobe manual downloads.

www.film-tech.com

INSTRUCTIONS FOR VARIABLE SPEED REWIND
16MM and 35MM

Draw a straight line on the rewind bench 3" back from the front edge: the clutch end of the rewind is to be mounted securely and lined up properly with this line.

The motor end of the rewind shall be placed 1" behind this line, and fastened securely in place.

The automatic control shall be mounted 2" to the left of the largest drive reel to be used. Adjust the control box to align the control box roller with the film by adjusting the control box location from front to rear. Adjustments to be made by screw and nut assembly on the back of the control box.

It may be necessary to adjust the automatic control. The film must have even pressure on both sides of the nylon roller, or this puts undue strain on one side of the film, making it easier to break.

Loosen the clutch on the rewind until it does not hold the automatic roller up. Then gradually tighten the clutch until it holds the roller up for normal rewinding. Adjust tension by the nut on the back of the clutch assembly. Too much clutch action will cause film to break unnecessarily.

Tighten the motor belt until you have no slippage during take off or braking action.

If you will take the time to make the above adjustments you will get excellent results with this equipment.

A three position switch with "off" in the middle position is provided. The "on" position is used for making up the show, and at any time you do not want to use the automatic control. The automatic roller will not work unless the switch is in "auto" position.

The desired speed of the motor may be adjusted by the speed control knob, located on the front of the control box.

When it is necessary to stop the film quickly during the rewind or make up operation, flip the switch located on the front of the control box from "on" to brake "BRK".

OIL THE CLUTCH FELT PAD MONTHLY WITH 90 WEIGHT MOTOR OIL



THEATRICAL ELECTRONICS CORP.

Box 706, 1122 Industrial Dr. — Matthews, N.C. 28105 — Phone: (704) 847-4455

Removable Arbor Assemblies

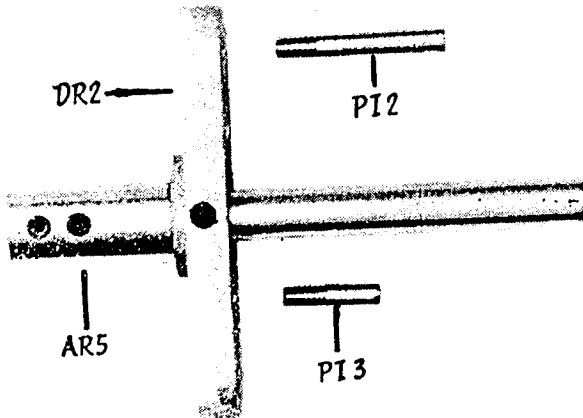
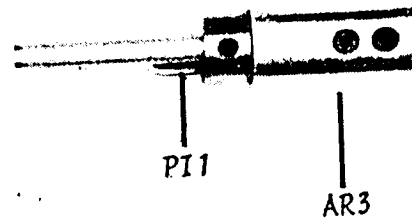
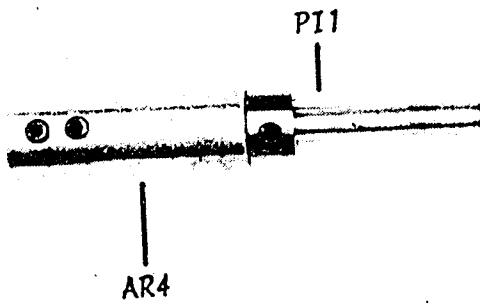
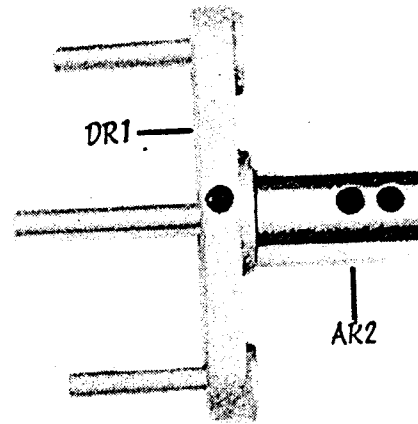
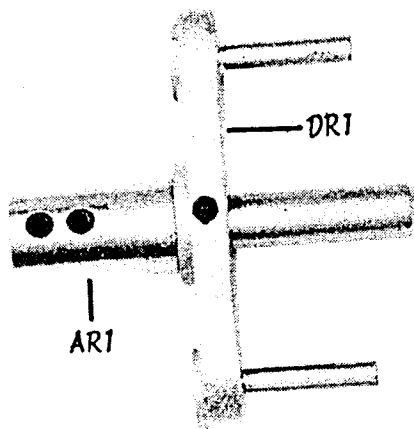
- AR1 Arbor assy Universal 1/2"
- AR2 Arbor assy Universal 5/16"
- AR3 Arbor assy 5/16" Pin
- AR4 Arbor assy Cinemacanica Pin
- AR5 Arbor assy Cinemacanica 1/4" Pin
- DR1 Driving Dog Universal
- DR2 Driving Dog Cinemacanica
- PI1 Pin
- PI2 Pin
- PI3 Pin
- C03 Collar

THEATRICAL
ELECTRONICS CORP.
 Box 706 - 1122 Industrial Dr.
 MATTHEWS, N. C. 28105

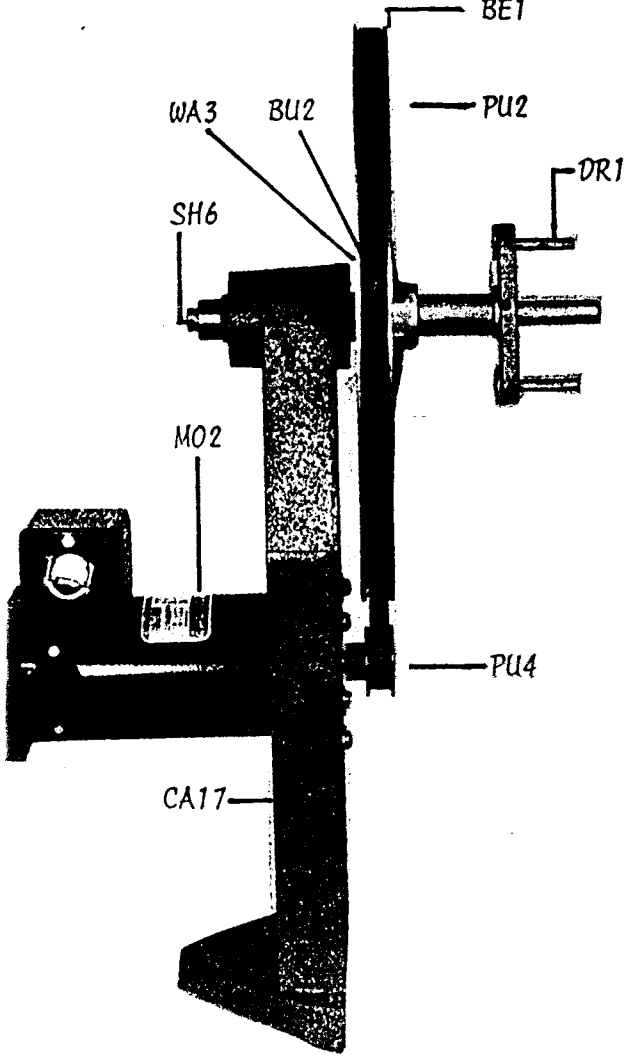
Dial (704) 847-4455



DELUXE REWIND

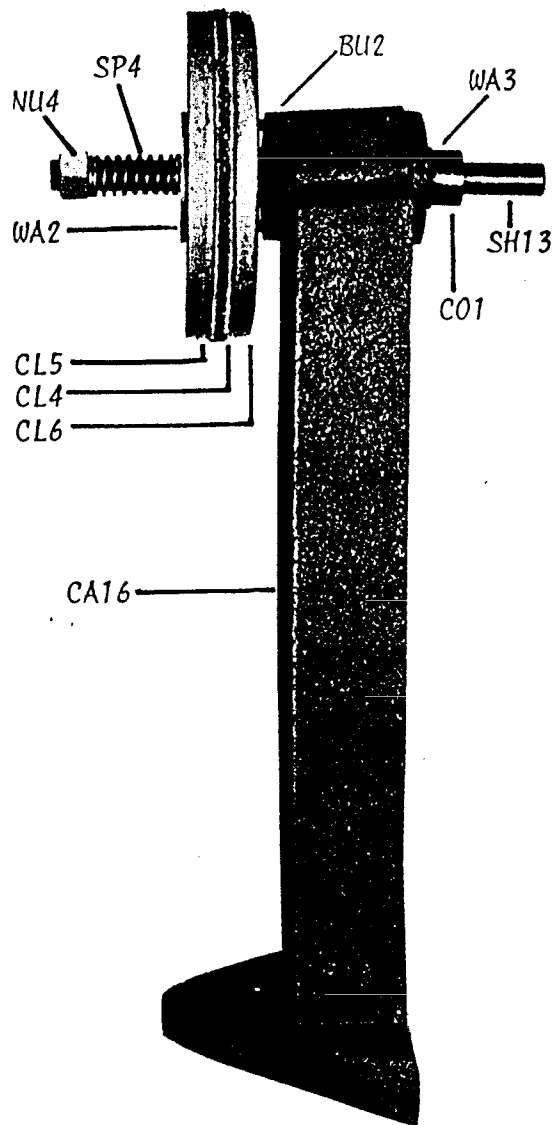


Variable Speed Rewind Parts List



- BE1 Belt "V" 3L390
- BU2 Bushing Bronze 3/16" X 1/2"
- CA17 Casting
- DR1 Driving Dog (Universal)
- MO2 Motor DC
- PU2 Pulley 12" X 1/2" Bore
- PU4 Pulley 1-1/2"--1/2" Bore
- SH6 Shaft (same as Deluxe Rewind)
- WA3 Washer Leather 1" X 1/2" Bore

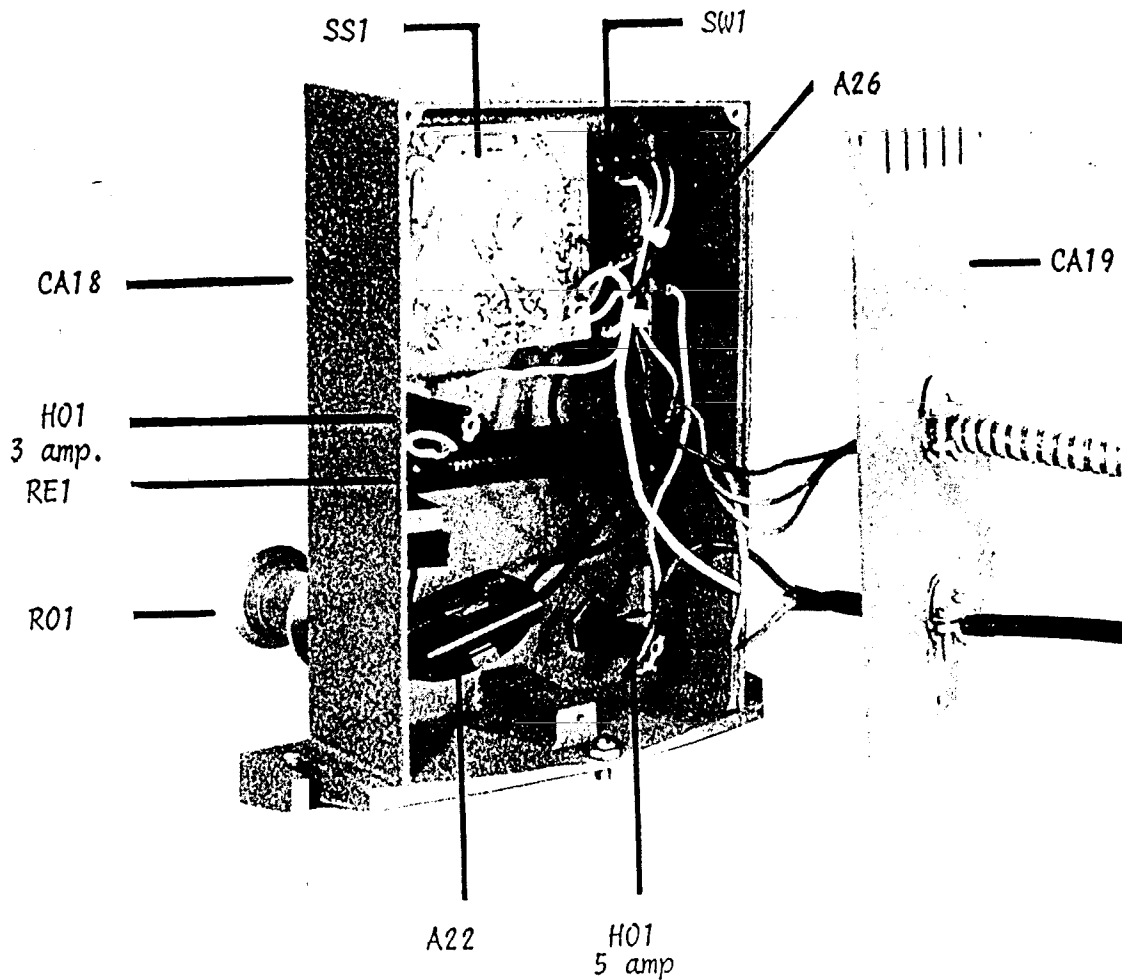
- BU2 Bushing Bronze 3/16"--1/2" Bore
- CA16 Casting
- CL4 Clutch Felt 1/4" thick 5" OD
- CL5 3/8" thick X 5" Plastic Clutch (slotted)
- CL6 3/8 X 5" Plastic Clutch (2 Pin Holes)
- C01 Collar 1/2"
- NU4 1/2"-20 Hex Nut
- SH13 1/2-20 Thread Rewind Clutch End
- SP4 Compression Spring
- WA2 Washer Fender 2"
- WA3 Washer Leather 1" X 1/2" Bore



THEATRICAL ELECTRONICS CORP.

BOX 706 - 1122 INDUSTRIAL DR.
MATTHEWS, N. C. 28105
Dial (704) 847-4455

VARIABLE SPEED REWIND PARTS LIST



THEATRICAL ELECTRONICS CORP.

Box 706, 1122 Industrial Dr. — Matthews, N.C. 28105 — Phone: (704) 847-4455

A22	Mercury Switch (5 amp)	H01	Holder (Fuse)
A26	Switch (on-auto) SP-DT---On-Off-On	RE1	Resistor 50 Watts 3 ohms
C18	Casting (Front Box)	R01	Roller Film W/Bearings
C19	Casting (Back Plate)	SS1	Variable Speed Control
	SW1		On-Brake Switch (On-On)