

# Film-Tech

The information contained in this Adobe Acrobat pdf file is provided at your own risk and good judgment.

These manuals are designed to facilitate the exchange of information related to cinema projection and film handling, with no warranties nor obligations from the authors, for qualified field service engineers.

If you are not a qualified technician, please make no adjustments to anything you may read about in these Adobe manual downloads

[www.film-tech.com](http://www.film-tech.com)

# STRONG®

## Film Splicer

### Operating Instructions & Parts List

#### Splicing Tape Installation

To replace the film splicing tape roll, pull the Movable Tape Holder away from the tape spool and remove the empty spool. Install the new roll of tape over the three pins in the Fixed Tape Holder and release the Movable Tape Holder to secure the roll in place. Make sure the tape feeds out at the top of the roll.

#### Trim Blade Replacement

**CAUTION:** The Trim Blades are very sharp. Handle blades carefully during replacement and avoid contact with the cutting edge.

1. Loosen the two Button Head Socket Capscrews securing the blade to the Punch Holder and remove the Trim Blade.
2. Install the new blade so the beveled side of the blade is away from the block. Hold the top edge of the blade snug against the Splicer Punch Holder stop (see Figure 2) and tighten the Capscrews.

**IMPORTANT!**  
DO NOT LOOSEN THESE BOLTS  
UNLESS A PUNCH HOLDER  
REALIGNMENT IS NECESSARY.  
(SEE PAGES 2 & 3)

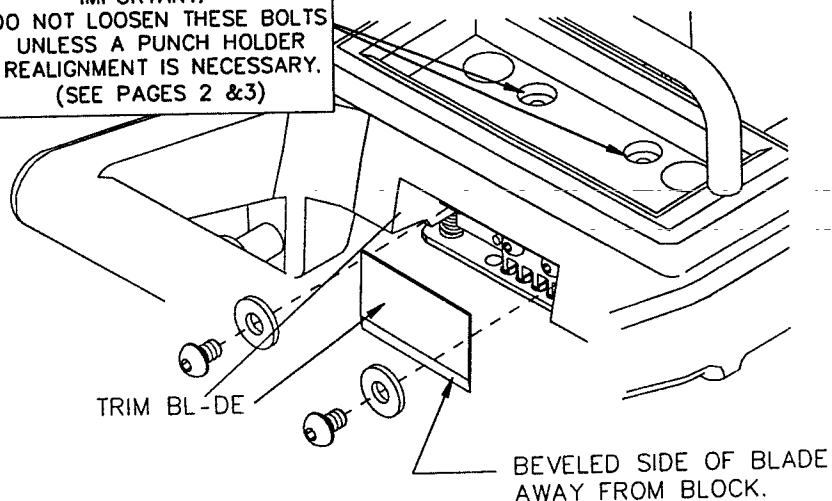
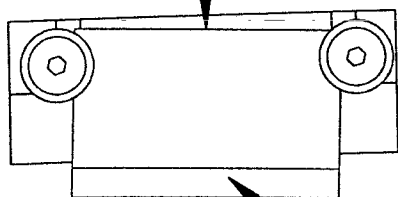


Figure 1

PUNCH HOLDER  
STOP



BEVELED SIDE  
OF BLADE

Figure 2

When installed properly the flatwashers will be over the blades and the blades will be at an angle so one end starts the cut first when trimming film.

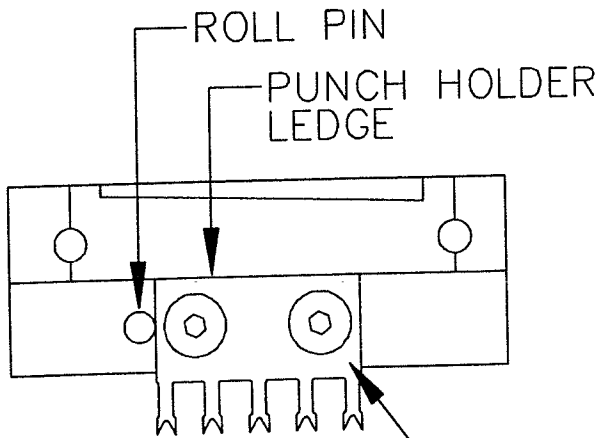
Check for proper operation. For maximum performance it is recommended that both blades be replaced whenever replacement is required.

## Punch Blade Replacement

The Trim Blades and Splicer Stripper Plate must be removed in order to change the Splicer Punch. Remove the Splicer Stripper Plate by using a 5/16" nut driver or socket to remove the two Nylon Insert Locknuts and Flatwashers recessed in the handle. Pull the plate out of the handle.

**CAUTION:** The Punch Blades are very sharp. Handle blades carefully during replacement and avoid contact with the cutting edges.

1. Remove the Trim Blade (see *Trim Blade Replacement*). Remove the two Button Head Socket Capscrews and remove the Punch Blade.
2. Install the new Punch Blade so it is against the roll pin and the Punch Holder Ledge (see Figure 4).
3. Slowly close the splicer and make sure the cutting edges of the Punch Blade enter the openings in the Splicer Punch Plate.



PUNCH BLADE  
Figure 4

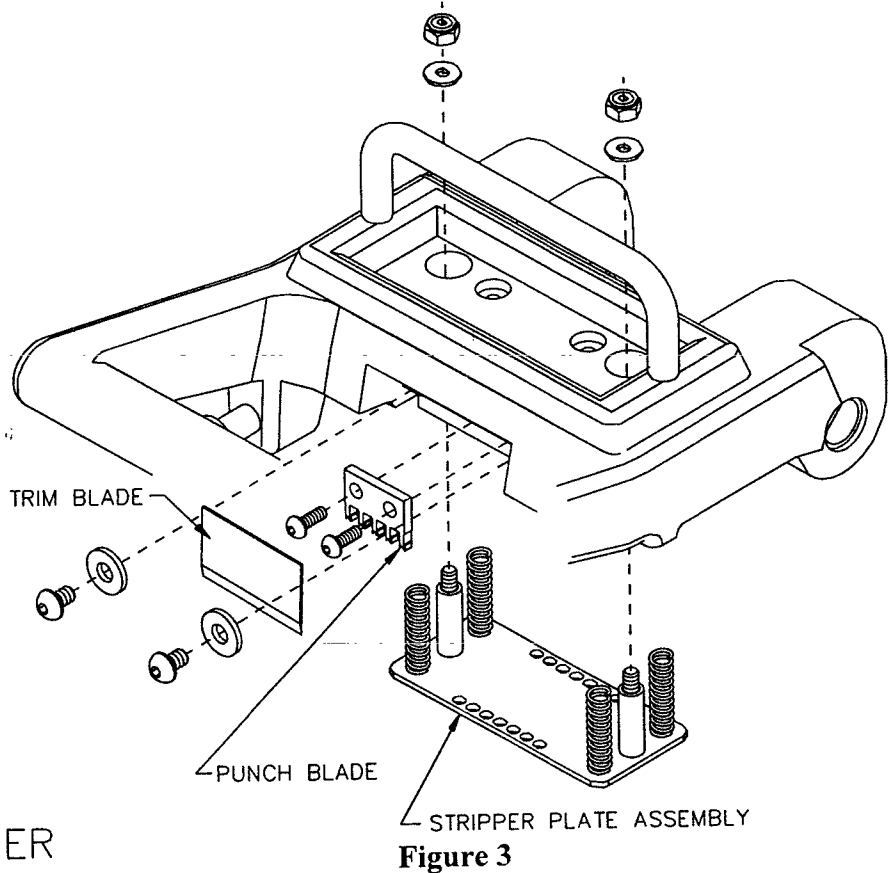


Figure 3

If the cutting edges interfere with the plate, the Punch Holder is out of alignment and must be realigned. (See *Splicer Punch Holder Realignment*, page 3)

4. Reinstall the Splicer Stripper Plate Assembly in the handle and secure with the Flatwashers and Nylon Insert Locknuts. Tighten the locknuts until the plate is secured. Check for proper operation.

**Do not over tighten the Splicer Plate Locknuts!**  
Over tightening will deform the Plate.

## Splicer Punch Holder Realignment

Should the Splicer Punch Holder ever need realignment or replacement, it must be “ragged in” using the following procedure:

**NOTE:** This procedure must be done with the Stripper Plate Assembly and the two Trim Blades removed as described in the *Punch Blade Replacement* instructions.

1. Loosen the two Sockethead Capscrews that mount the Punch Holder to the Handle (see Figure 5) enough to allow the Punch Holder to move freely.

2. Drape a double thickness of nylon stocking across the center of the Splicer Base so the holes in the Splicer Punch Plate are covered. (See Figure 5).

3. Place a .07 to .09 inch thick spacer on the front ledge of the Base as shown. A nickel is the correct thickness to be used as a spacer. (See Figure 5).

4. Slowly close the Handle until the Punch Blades begin to pierce the nylon stocking and enter the holes in the Punch Plate. Continue closing the handle until the Handle stop contacts the spacer.

5. Hold the Handle in the closed position and tighten the Capscrews securing the Punch Holder in place. Alternate back and forth between the two Capscrews while tightening to keep from tipping the block. This will center the Punch Blades in the Punch Plate holes.

6. Open the Handle and remove the spacer and nylon material. Close the Handle and visually check the alignment of both the front and back Punch Blades engaged in the Punch Plate holes. If there is still interference, call your service center for further instructions.

7. Reinstall the Stripper Plate Assembly and the Trim Blades as described in the *Punch Blade Replacement* instructions.

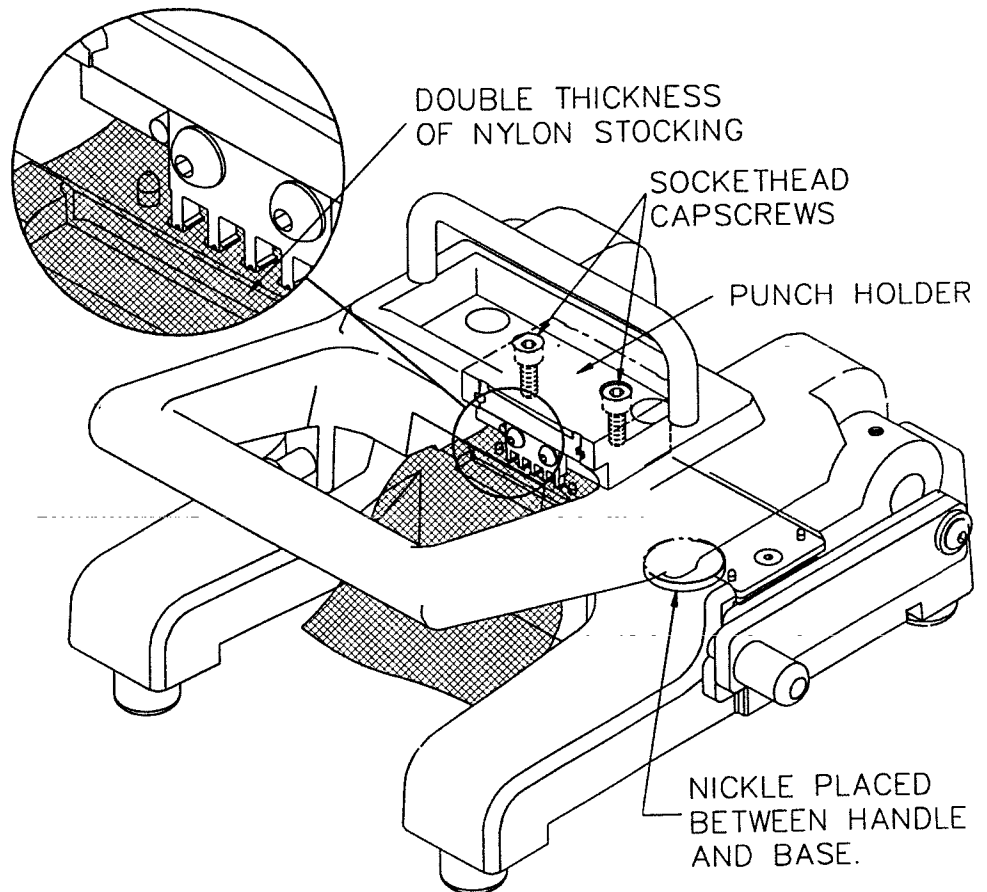


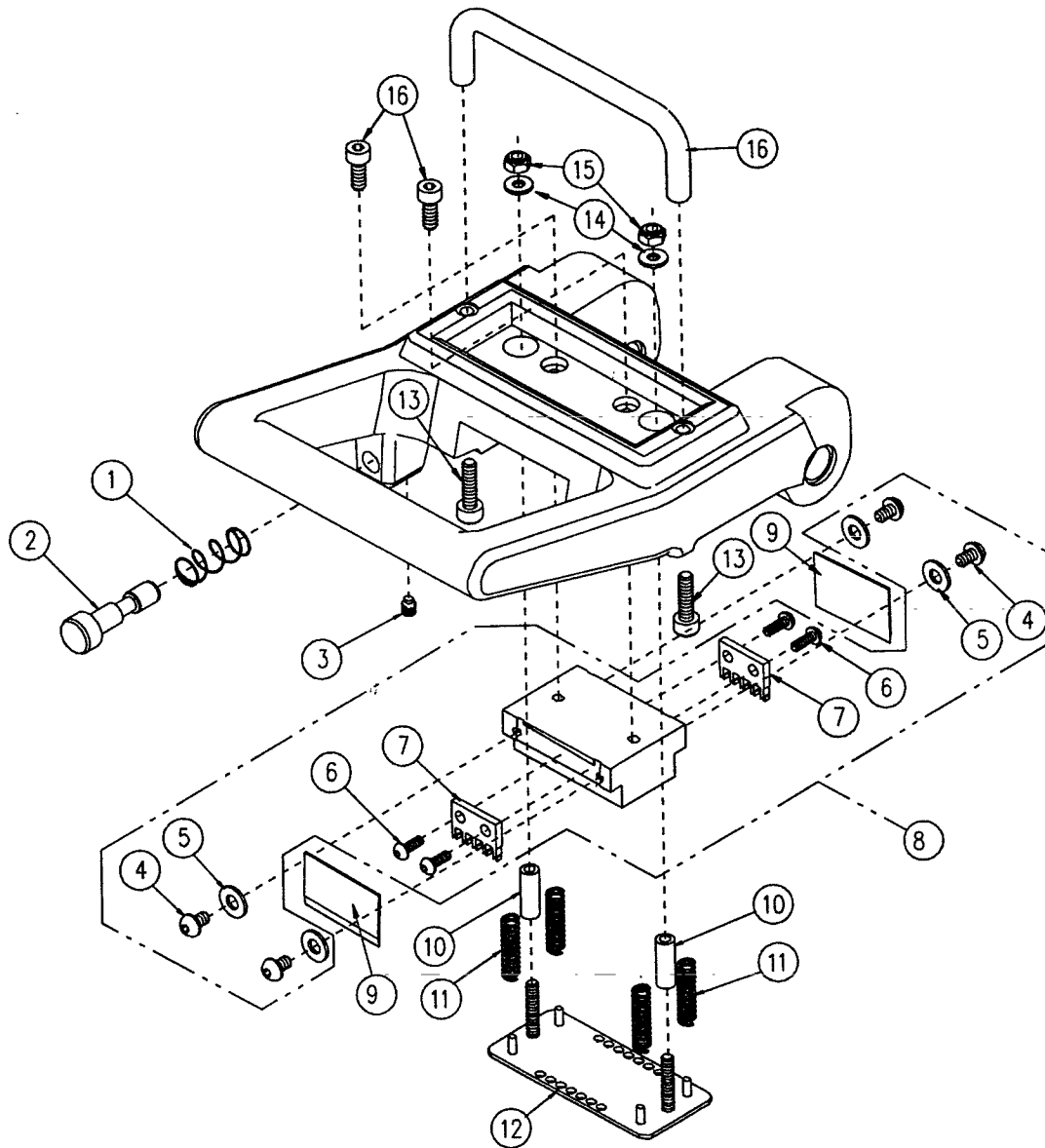
Figure 5

## **Splicer Cutter Blade Assembly Replacement**

To replace the Splicer Cutter Blade Assembly (item 5, page 6), simply remove the two Socket Head Flathead Screws and install the new Splicer Blade Assembly using the furnished screws.

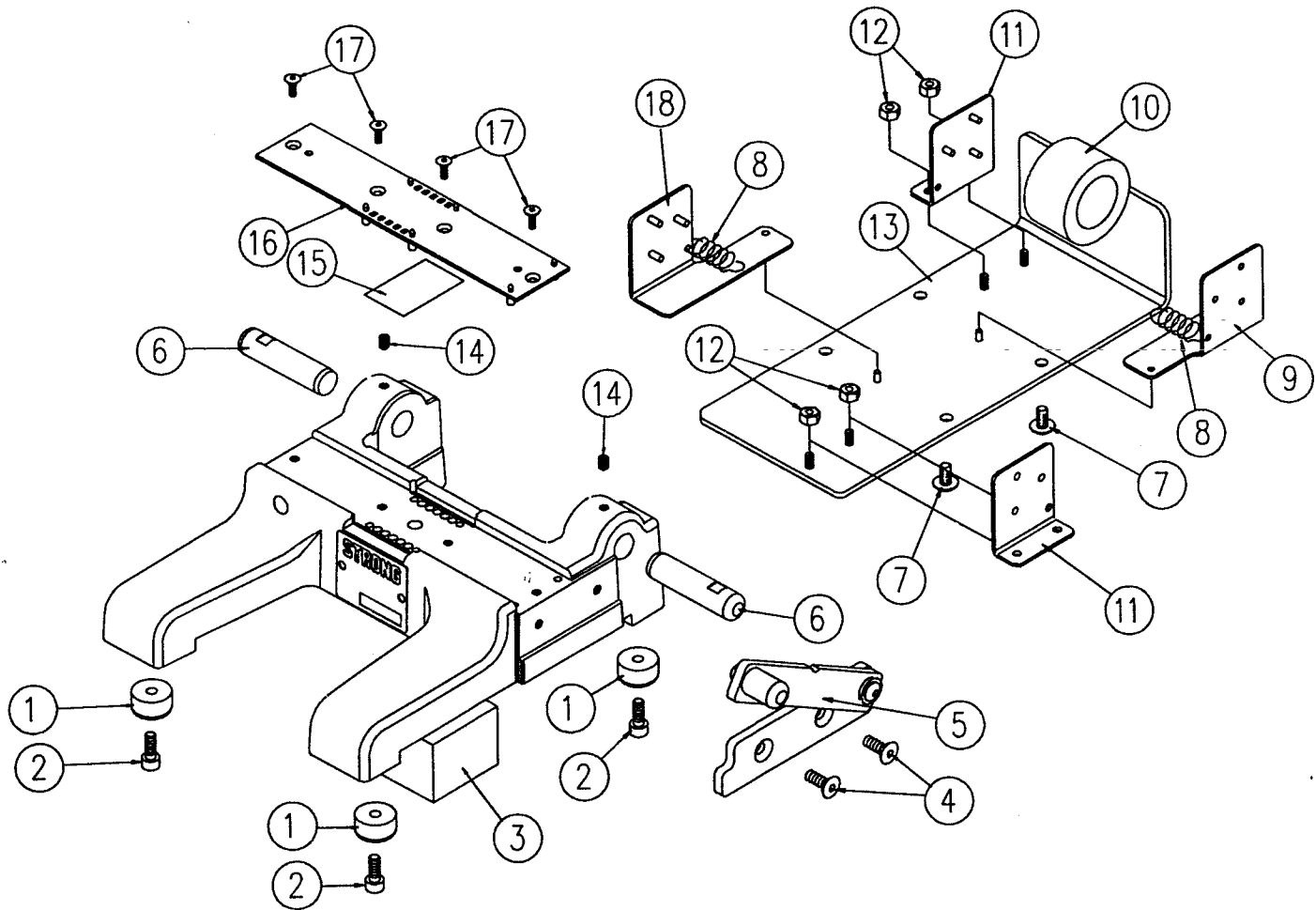
## **Cleaning Sprocket Hole Punch-outs.**

The cavity below the Punch Plate contains a block of foam which captures the punch-outs as the Splicer is used. The punch-outs will need to be removed periodically (approximately every 2000 splices). Remove the four screws securing the Bottom Plate Assembly to the main body of the Splicer and remove the foam from the cavity. Clean out the punch-outs and reinstall the Foam and the Bottom Plate Assembly.



### SPLICER HANDLE REPLACEMENT PARTS

- |    |      |  |     |      |                            |
|----|------|--|-----|------|----------------------------|
| 1. | 1234 | Latch Pin Spring                           | 9.  | 4806 | Splicer Trim Blade         |
| 2. | 4801 | Splicer Latch Pin                          | 10. | 4922 | Spacer, 1/4 x .136 x 3/4"  |
| 3. | 4914 | SSS 10-32 x 1/4"<br>Halfdog, Self Locking. | 11. | 4917 | Stripper Spring            |
| 4. | 4911 | Screw, BHSCS 8-32 X 1/4"                   | 12. | 4928 | Splicer Stripper Plate     |
| 5. | 4962 | Flatwasher, #8 SS                          | 13. | 3959 | SHCS 10-32 X 3/4"          |
| 6. | 4910 | Screw, BHSCS 6-32 X 3/8"                   | 14. | 1880 | Flatwasher #6              |
| 7. | 4813 | Splicer Punch                              | 15. | 1084 | Locknut, Nylon Insert 6-32 |
| 8. | 4805 | Splicer Punch Holder Assy.                 | 16. | 4860 | Splicer Top Handle         |



### SPLICER BASE REPLACEMENT PARTS

1.	4921	Splicer Bumper	10.	4924	Splicer Tape
2.	1592	SHCS 10-32 x 1/2"	11.	5033	Tape Holder Fixed Assy.
3.	4932	Splicer Foam	12.	1084	Locknut, Nylon Insert, 6-32
4.	4913	SHFS 10-32 x 1/2"	13.	5048	Splicer Bottom Plate Double Assy.
5.	5035	Splicer Blade Assembly	14.	2198	SSS 8-32 x 1/4"
6.	4802	Splicer Hinge Pin	15.	4931	Splicer Mylar Stripper
7.	1071	PTH 10-32 x 3/8"	16.	5037	Splicer Punch Plate Assy.
8.	4918	Tape Holder Spring	17.	4909	SFHS 4-40 x 3/8"
9.	5032	Tape Holder Movable Rear Assembly	18.	5047	Tape Holder Moveable Front Assembly.