

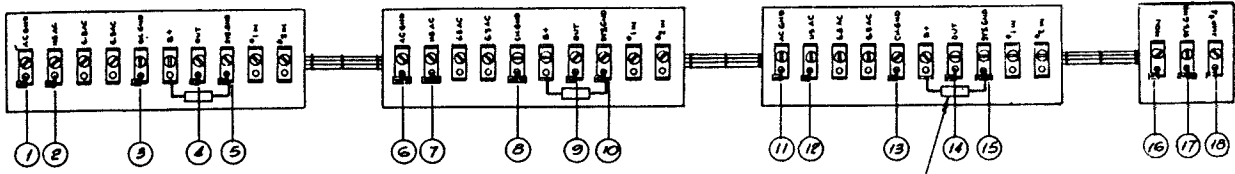
Film-Tech

The information contained in this Adobe Acrobat pdf file is provided at your own risk and good judgment.

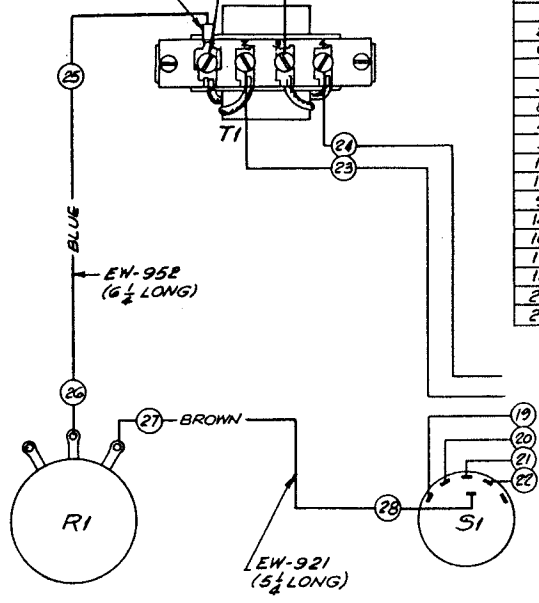
These manuals are designed to facilitate the exchange of information related to cinema projection and film handling, with no warranties nor obligations from the authors, for qualified field service engineers.

If you are not a qualified technician, please make no adjustments to anything you may read about in these Adobe manual downloads.

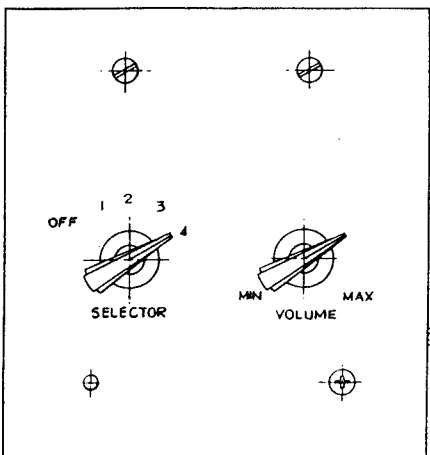
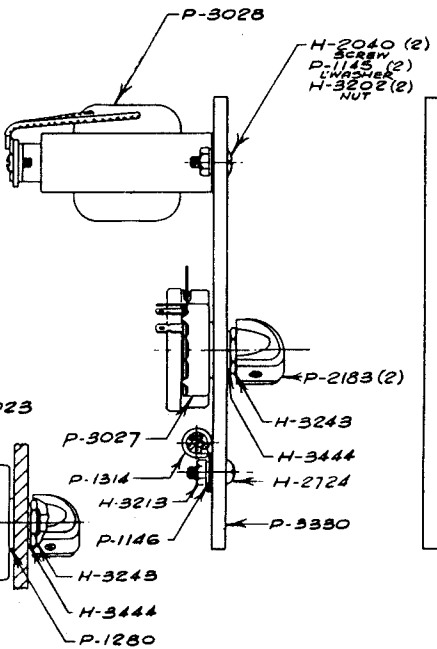
www.film-tech.com



P-2497
EW-922, 1 1/2 LONG-COVER WITH EW-961 SLEEVING.



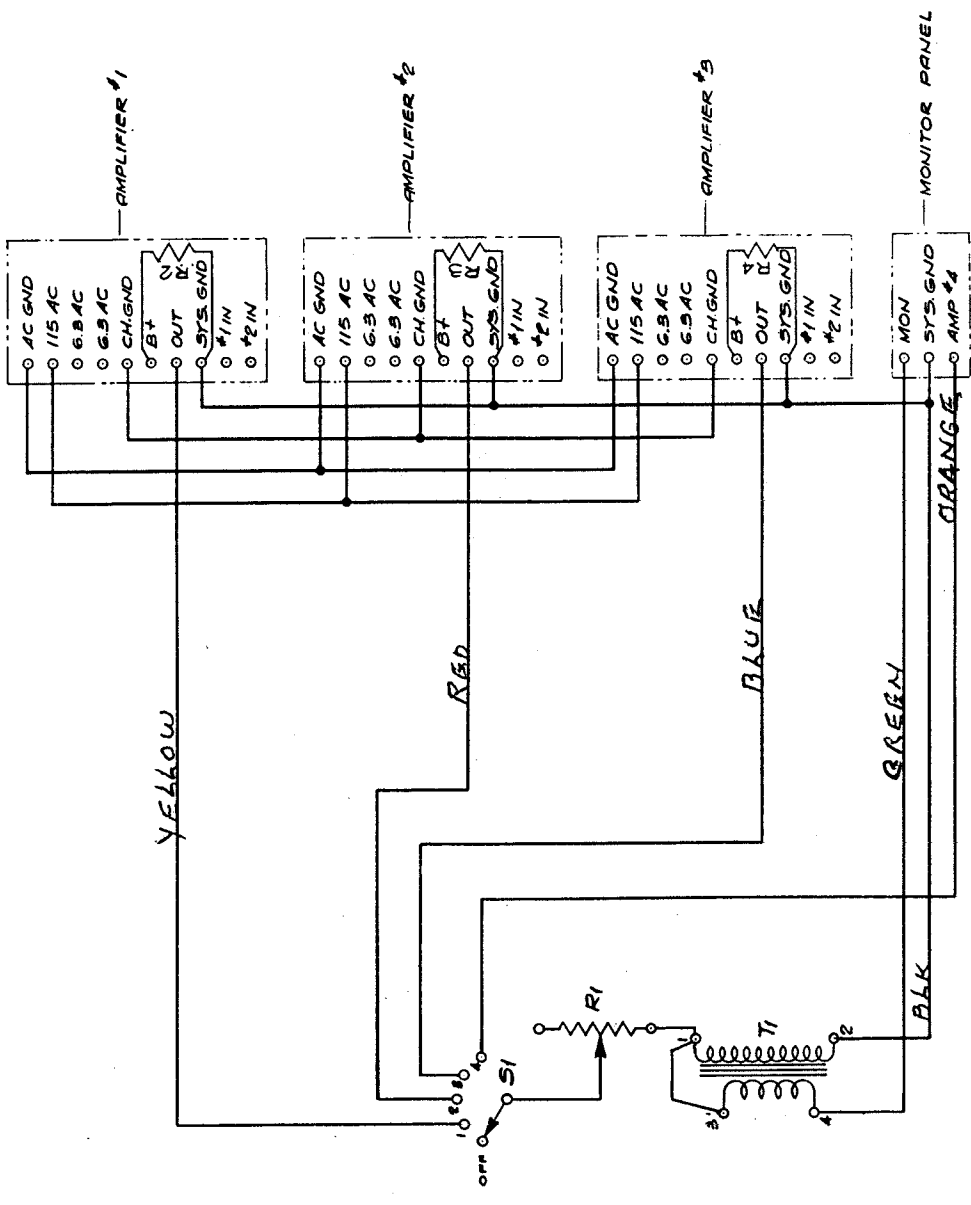
FROM	TO	COLOR
1	6	PUR TWIST
2	7	GRN
6	11	PUR TWIST
7	12	GRN TWIST
3	8	WHITE
8	13	WHITE
4	22	YELLOW
5	15	BLACK
10	15	BLACK
17	15	BLACK
9	21	RED
14	20	BLUE
16	24	GREEN
17	23	BLACK
18	19	ORANGE
25	26	BLUE
27	28	BROWN



P-2076 (3)

W-1142

DATE: 7-27-53
 ON MONITOR PANEL
 LARD FROM SYS CAB
 WRS TO 3.
 REMOVED Jumper
 FROM 3 TO 6. OUT 1
 ADDED JUMPER
 BETWEEN 1 & 3 ON 11
 11/11/53
 12/11/53
 12/11/53
 ADDED RESISTORS
 R1, R2, R3 TO
 AMPS, 1, 2, 3, AND
 TO PANEL.
 1/12/54
 ISSUE: 3-9-54



SYMBOL	IAC PART NO	DESCRIPTION
R1	P-5025	RESISTOR, 600 Ω POTENTIOMETER
S1	P-3027	SWITCH, ROTARY, 1 POLE 5 POSITION
T1	P-3028	TRANSFORMER
R2, R3, R4	P-2076	RESISTOR, 100K Ω 2W.

REF. DWG: G-2553 MONITOR PANEL & TERMINAL BOARDS ASS'Y.

SCALE

SCHEMATIC

MONITOR PANEL AND
 SYS CAB KIT GND-1062

INTERNATIONAL PROJECTOR
 CORPORATION
 85 LA FRANCE AVENUE
 BLOOMFIELD 10, N.J.

DR. P. D. CHY. M.S. APP. (S)

PRODUCT CLASS

F										
---	--	--	--	--	--	--	--	--	--	--

ALL DIMENSIONS UNLESS OTHERWISE SPECIFIED ARE IN INCHES AND DECIMALS THEREOF.