

Film-Tech

The information contained in this Adobe Acrobat pdf file is provided at your own risk and good judgment.

These manuals are designed to facilitate the exchange of information related to cinema projection and film handling, with no warranties nor obligations from the authors, for qualified field service engineers.

If you are not a qualified technician, please make no adjustments to anything you may read about in these Adobe manual downloads.

www.film-tech.com

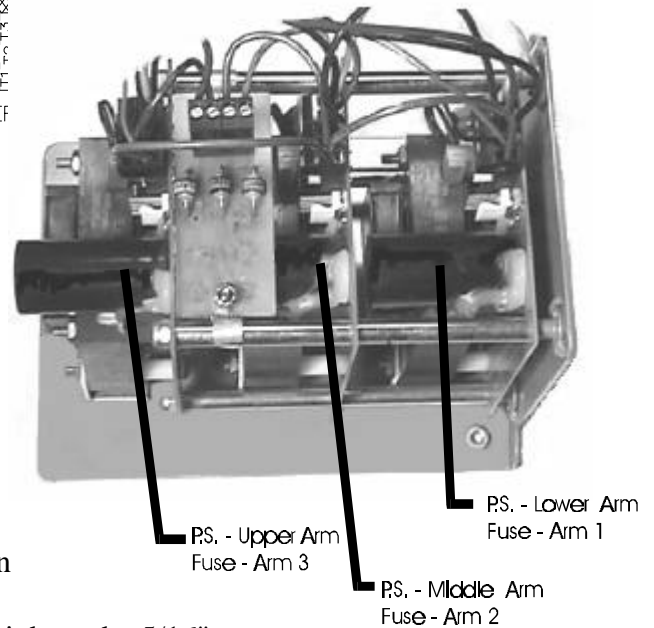
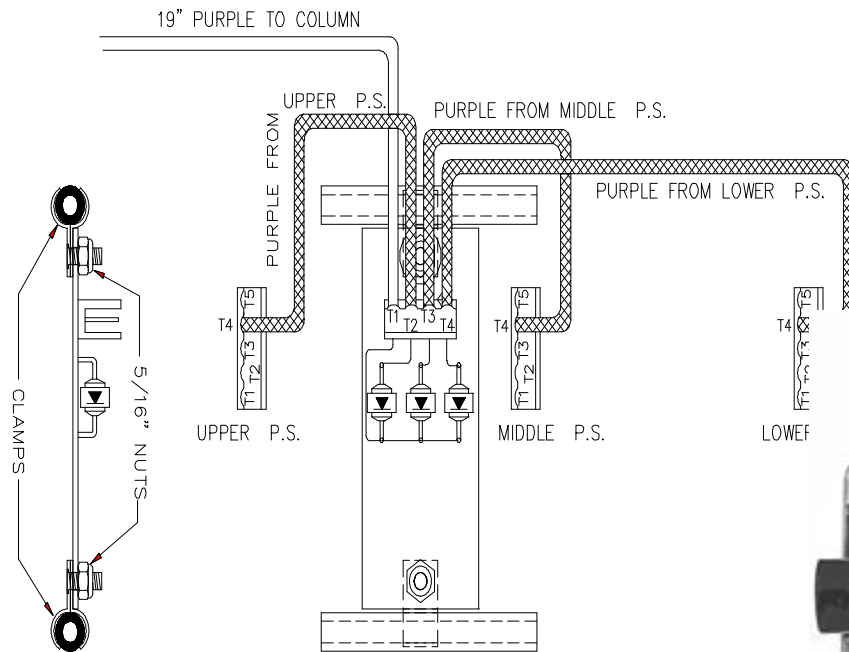
POWER SUPPLY DIODE CARD

PRODUCT INFORMATION BULLETIN # 4449
PS DIODE CARD MODULE

PS DIODE CARD KIT # 4450

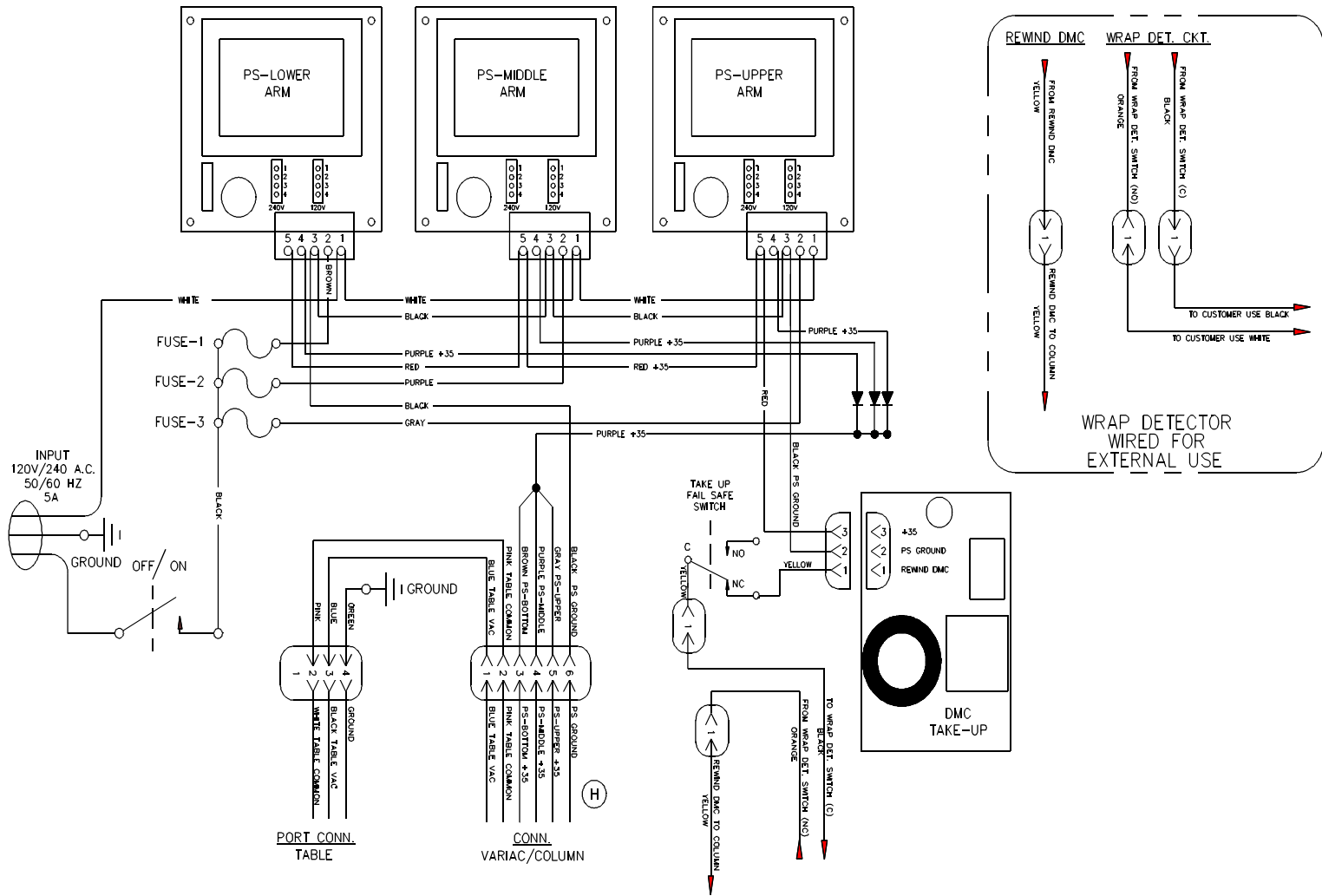
Purpose:

The power supply diode card was added to prevent a failed power supply from damaging the two remaining power supplies.



Installation

1. Loosen the 5/16" nuts until the clamps will rotate.
2. Locate the diode card in the power supply as shown in Figure A.
3. Rotate the clamps around the tray spacer rods and tighten the 5/16" nuts. The diode card should now be secure.
4. Remove the two 3 1/2" purple wires from the existing lower, middle, and upper power supply connections, terminal 4 and discard. Pull the 19" purple wire from terminal 4 on the upper power supply and put it into terminal one on the diode card.
5. Put the other 3 purple wires from the diode card term 2, 3, 4, into terminal 4 of the appropriate power supply as shown in Figure B.



FUSE CHART
F1, F2, & F3

VOLT	AMP	PS JUMPER
120	1 1/2 SB	120
240	3/4 SB	240