

# FILM-TECH

**THE INFORMATION CONTAINED IN THIS ADOBE ACROBAT PDF FILE IS PROVIDED AT YOUR OWN RISK AND GOOD JUDGMENT.**

**THESE MANUALS ARE DESIGNED TO FACILITATE THE EXCHANGE OF INFORMATION RELATED TO CINEMA PROJECTION AND FILM HANDLING, WITH NO WARRANTIES NOR OBLIGATIONS FROM THE AUTHORS, FOR QUALIFIED FIELD SERVICE ENGINEERS.**

**IF YOU ARE NOT A QUALIFIED TECHNICIAN, PLEASE MAKE NO ADJUSTMENTS TO ANYTHING YOU MAY READ ABOUT IN THESE ADOBE MANUAL DOWNLOADS.**

**[WWW.FILM-TECH.COM](http://WWW.FILM-TECH.COM)**

## **Turret Control Module Instructions**

### **Termination Schedule:**

Terminal #1	Flat Command Switch
#2	Command Switch Common
#3	Scope Command Switch
#4	N/C
#5	Masking Common
#6	Masking Scope
#7	Masking Common
#8	Masking Flat
#9	Aperture Motor (+) Red
#10	" " (-) Black
#11	Turret Motor (+) Red
#12	" " (-) Black
#13	N/C
#14	120 Vac Line In
#15	N/C
#16	120 Vac Neutral
#17	N/C
#18	Chassis Ground

### **Potentiometer Schedule:**

R1	Flat Command Time Duration
R26	Scope Command Time Duration
R18	Aperture Motor Current Limiter Adjust
R19	Aperture Motor Voltage Adjust

### **Adjustments**

***Before beginning turn all pots to the full CCW off position. All adjustments are to be done with both FLAT and SCOPE lens installed in the Turret Assembly.***

#### **#1 R1 Flat Command Time Duration:**

Cycle the Turret to the Scope position, turn Pot R1 1/4 rotation. Now cycle the Turret to the Flat position, after the Turret completes its rotation the motor should overtravel for about 1/4 of a second to assure proper indexing. If insufficient travel occurs adjust R1 accordingly CW for longer time duration, CCW for shorter time duration.

**#2 R26 Scope Command Time Duration:**

This adjustment is achieved the same as the Flat except that R26 is the adjusting potentiometer.

***After Lens travel has been set proceed to the next two adjustments.***

**#3 R19 Aperture Motor Voltages:**

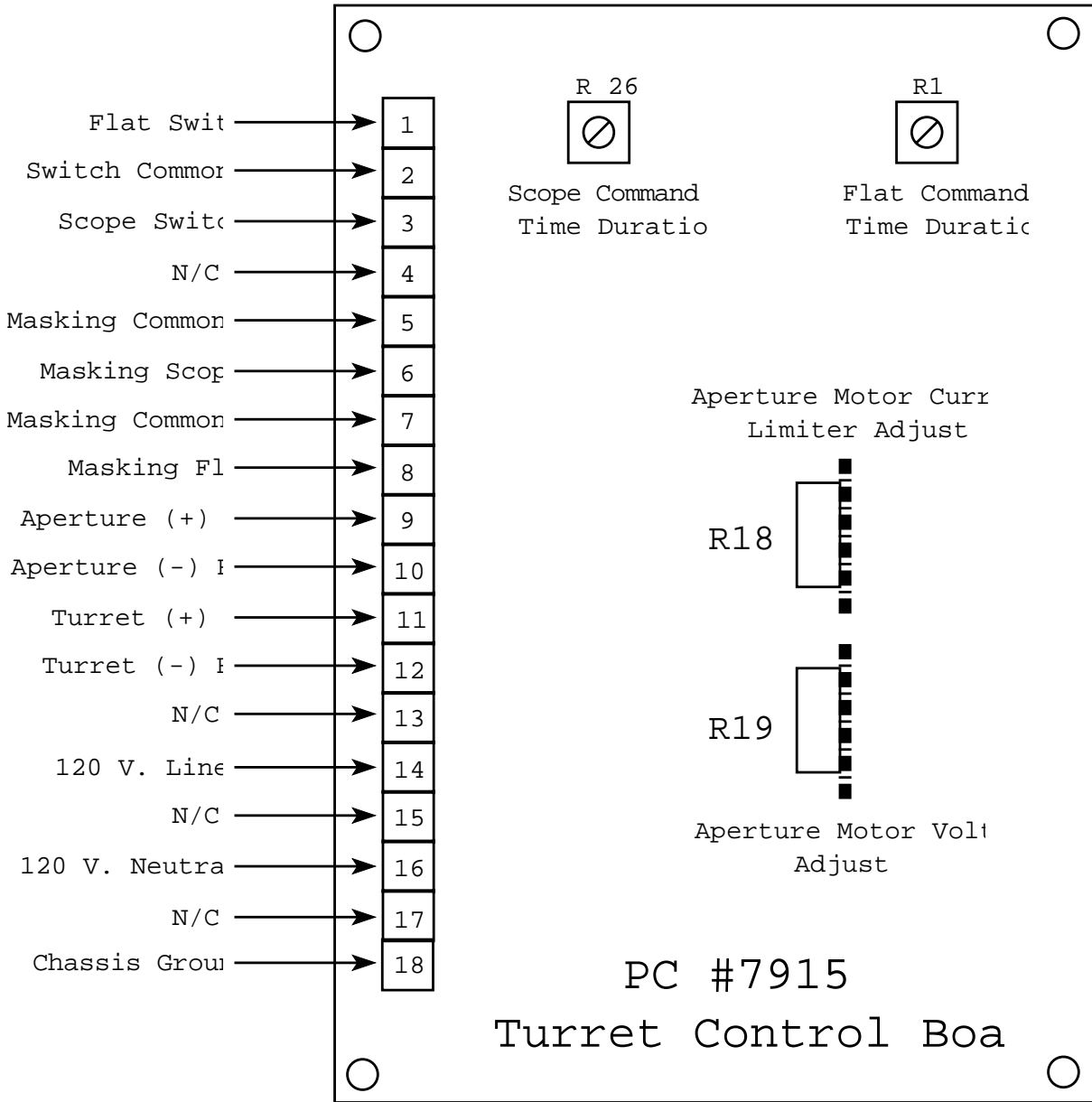
Adjust this Pot so that the Aperture Plate meets its stop the same time that the lens meets its stop.

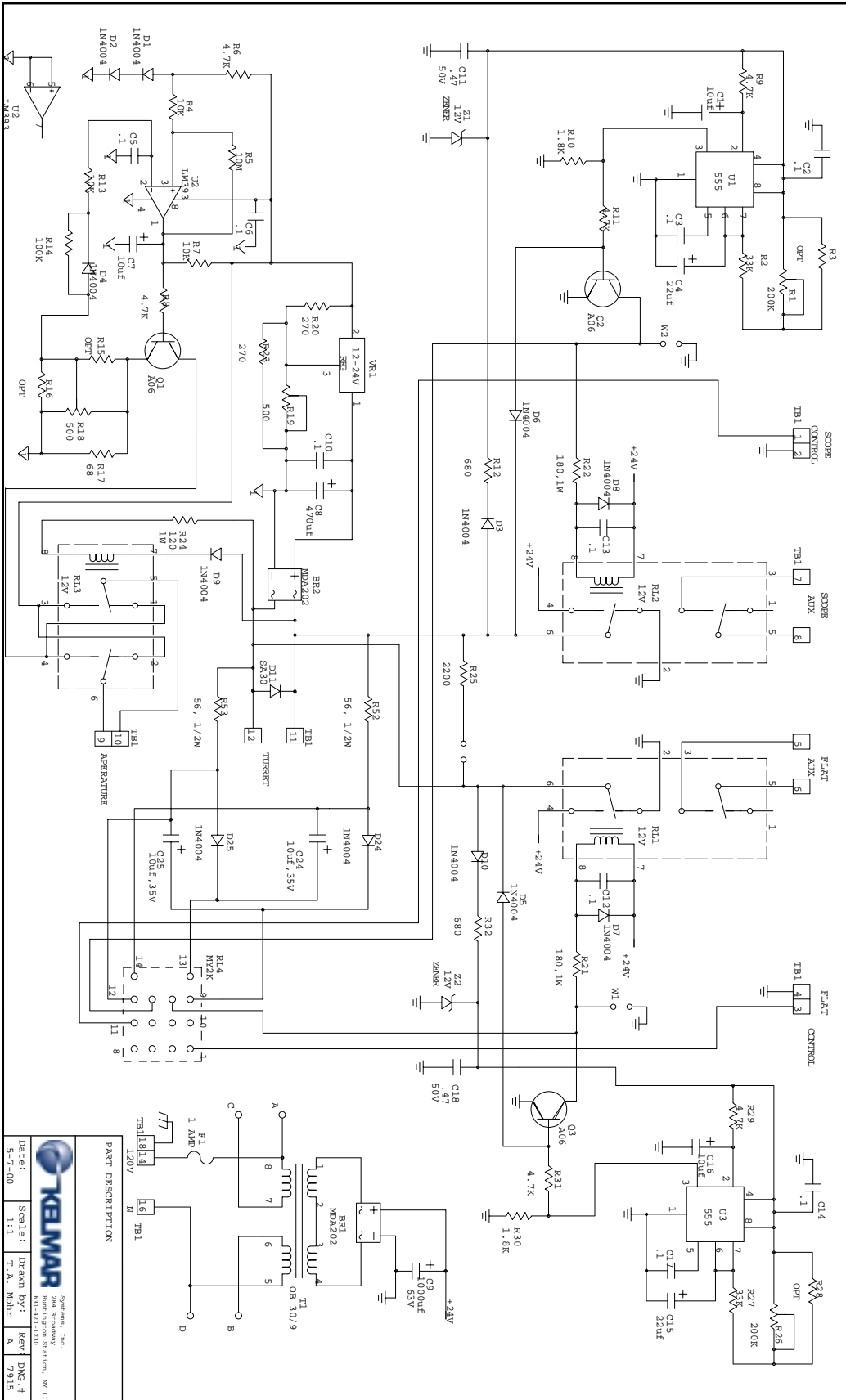
**#4 R18 Aperture Motor Current Limiter:**

Adjust this Pot so that when the Aperture Plate meets its stop the motor will rest as the turret is still overtraveling.

If further assistance is required contact:

Kelmar Systems Inc.  
284 Broadway  
Huntington Station, N.Y. 11746  
Phone (631) 692-6131  
Fax (631)421-1274





**PART DESCRIPTION**

Date:	Scale:	Drawn By:	Rev	DRG #
5-7-00	1:1	T.A. Mohr	A	7915

Systems, Inc.  
284 Broadway  
601-421-1130  
action: rev 11