

FILM-TECH

THE INFORMATION CONTAINED IN THIS ADOBE ACROBAT PDF FILE IS PROVIDED AT YOUR OWN RISK AND GOOD JUDGMENT.

THESE MANUALS ARE DESIGNED TO FACILITATE THE EXCHANGE OF INFORMATION RELATED TO CINEMA PROJECTION AND FILM HANDLING, WITH NO WARRANTIES NOR OBLIGATIONS FROM THE AUTHORS, FOR QUALIFIED FIELD SERVICE ENGINEERS.

IF YOU ARE NOT A QUALIFIED TECHNICIAN, PLEASE MAKE NO ADJUSTMENTS TO ANYTHING YOU MAY READ ABOUT IN THESE ADOBE MANUAL DOWNLOADS.

WWW.FILM-TECH.COM

FC-1 Film Cleaner Parts List

Both the 35mm and 70mm film cleaners are shipped with brackets and bypass rollers appropriate for either 35mm or 70mm operation only. A special accessory kit has been developed for those installations where the interchangeability of 35mm and 70mm film cleaners on the same projector is required, utilizing a common guidance system and film cleaner support bracket.

The kit consists of the following parts:

1	7508311	70mm Adaptor Plate
1	7508312	35mm Adaptor Plate
1	7508313	Shaft
1	7508247	Arm
1	720376	35/70 Roller

Installation and Operating Instructions:

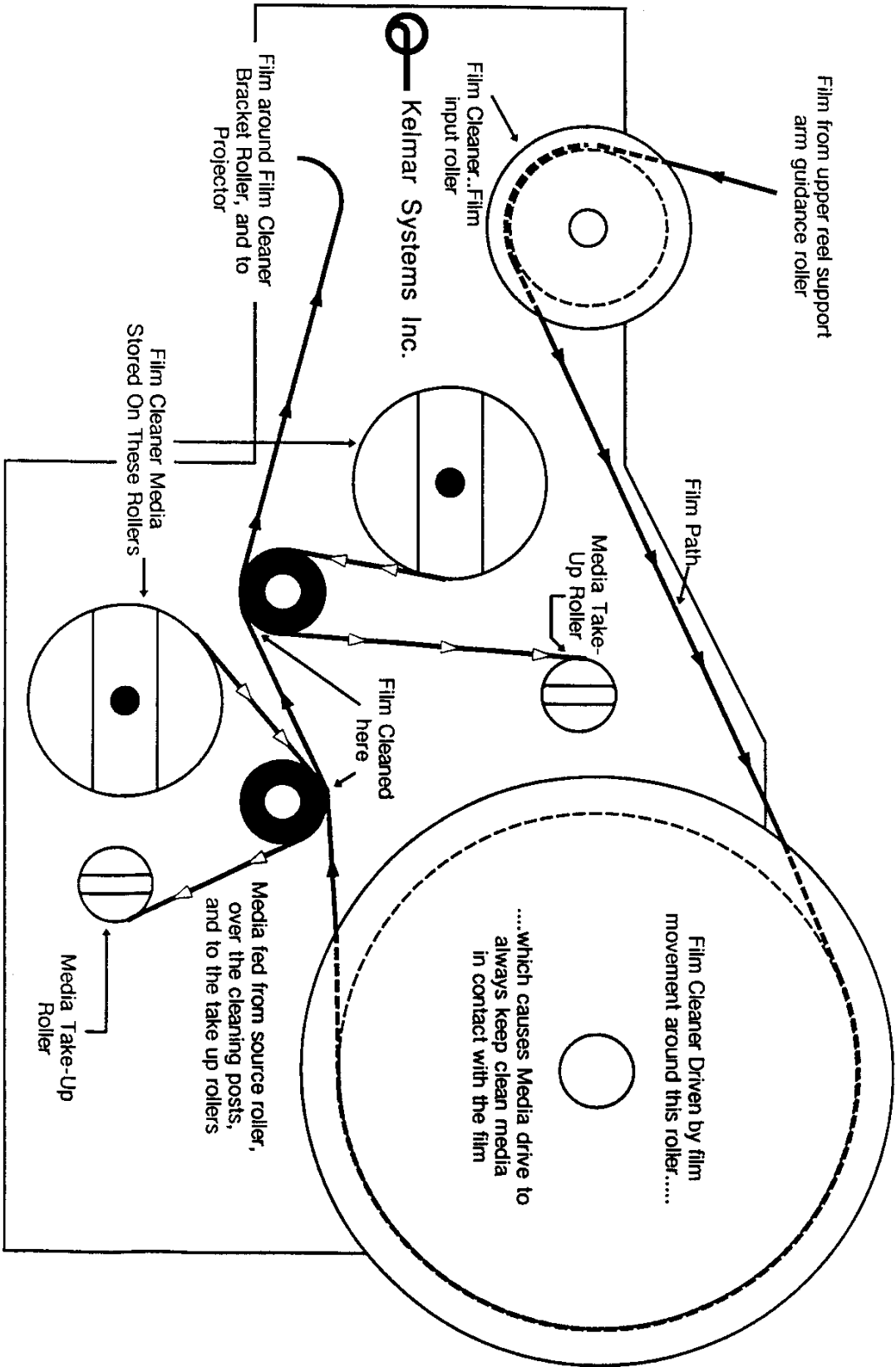
Remove the 70mm roller, shaft and arm assembly from your film cleaner mounting bracket. Install the 35/70 combination bypass roller, shaft and arm assembly with the same mounting screw.

Permanently attach the 70mm adaptor plate, P/N 7508311, to the bracket.

A 70mm film cleaner can now be mounted with proper alignment for either a reel support arm or platter guidance hardware.

Before installing a 35mm film cleaner, add the 35mm adaptor plate, P/N 7508312, to the 70mm mounting surface and then mount the 35mm cleaner in its normal sequence

Both the 35mm and 70mm cleaners will now be properly aligned with film path geometry and will automatically center with respect to the combination bypass roller.



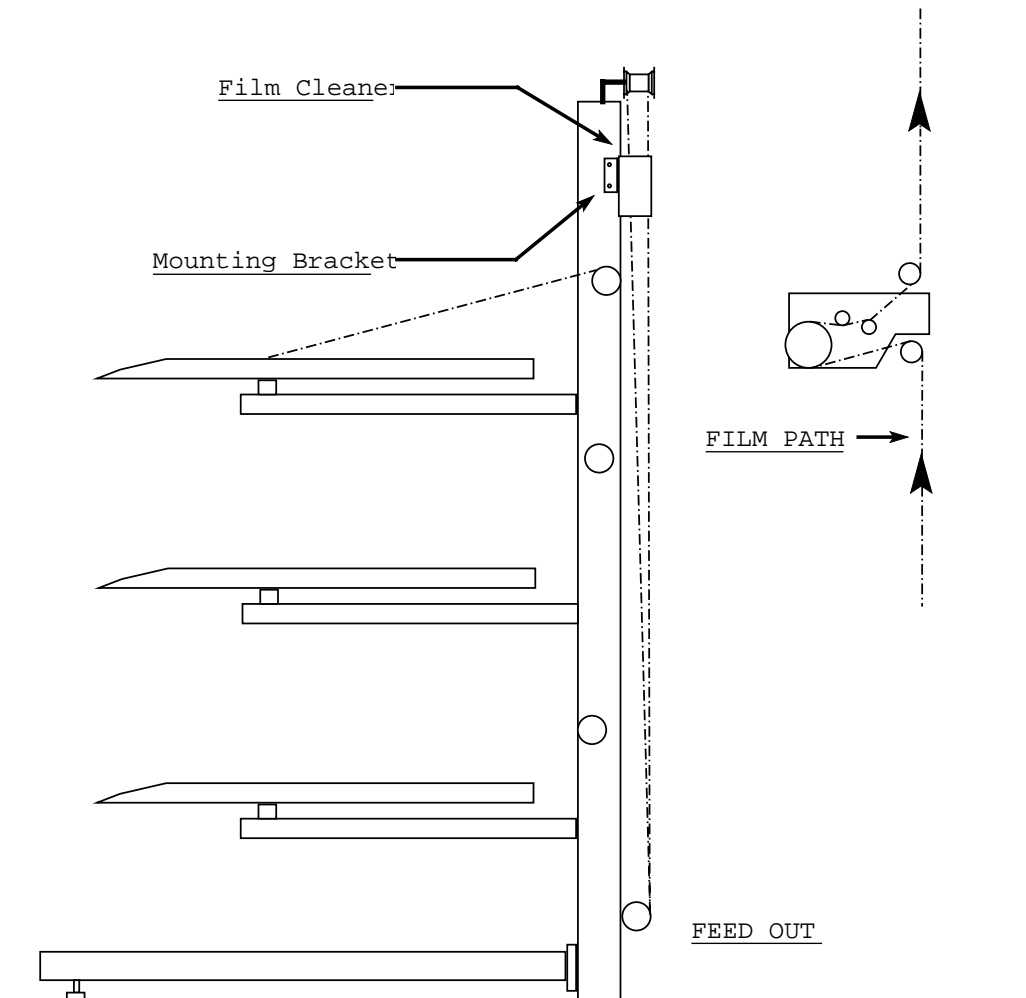
The Kelmar Film Cleaner can be mounted on the feed out side of a platter. The film cleaner mounts on the feed out side between the top platter feed out roller and the Projector feed out roller.

When used on a platter, the Film Cleaner is UPSIDE DOWN so that the film travels through it in the normal direction.

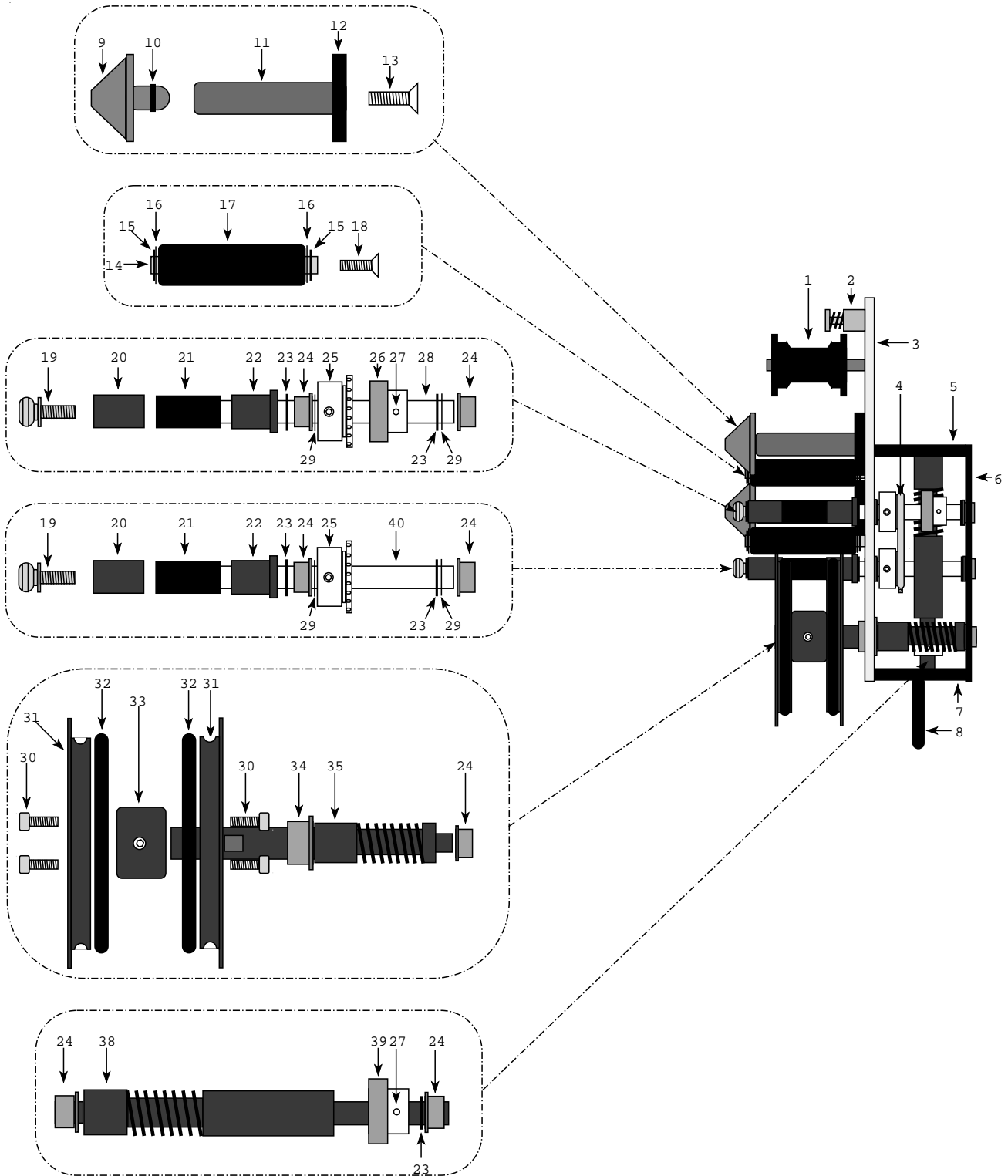
To install:

- 1.. Thread film through the feed out side of the platter. Use masking tape to keep the film at the feed out of the platter anchored.
2. Attach the film cleaner to the platter mounting bracket, attach the output roller and link to the platter mounting bracket.
3. Hold the film cleaner upside down and thread the film through it, pulling on the film to make it tight. Press the mounting bracket to the post of the platter and align the film cleaner so that the film is aligned on both the input and output rollers.
4. Mark the platter post. Open the door of the platter and make certain that you will not be drilling through wires, parts, etc. Drill the mounting holes and fasten the bracket to the post.

The mounting bracket will remain on the platter. Remove the film cleaner and use it on the other platters for alignment of the bracket.

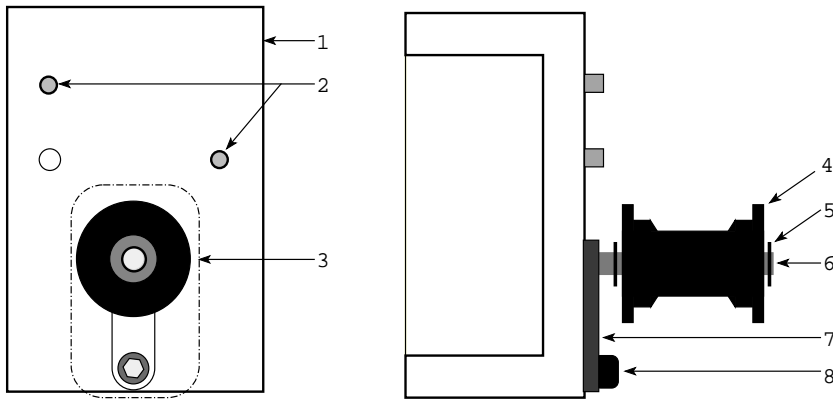


FC-1 PARTS Diagram and Listing



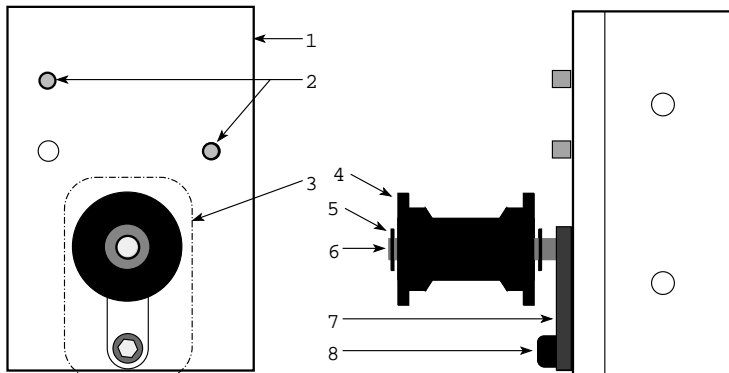
Index	Part No.	Description
1	720336	Roller, Film By-Pass
2	7508253	Screw, Spring Loaded Mounting
3	7508431	Main Plate
4	7508456	Chain, 10" Drive
5	7508434	End Plate
6	7508432	Side Plate
7	7508433	End Plate
8	720465	Handle
9	7508308	Cap, Media Supply Spindle W/ O ring
10	720462	Ring, O, Keeper
11	7508438	Shaft, Media Supply
12	7508248	Flange, Media Supply
13	720348	Screw, Shaft, Media Supply
14	7508242	Shaft, Media Idler Roller
15	720407	Ring, Retaing Media Idler Roller
16	7508249-29	Washer, Precision Shim
17	7508241	Roller, Media Idler
18	720348	Screw
19	7508262	Thumbscrew, Media Take-Up Shaft
20	7508261	Cap, Pressure, Media Take-Up Shaft
21	7508259	Sleeve, Media Take-Up Shaft
22	7508260	Shoulder, Media Supply Spindle
23	720410	Ring, Retaining
24	7508467-1	Bearing, Flanged Sleeve
25	7508455	Sprocket
26	7508444-1	Worm Gear, Media Take-up
27	RPJS	Pin, Spring
28	7508445	Shaft, Media Take-Up, Upper
29	WAPS-S	Washer, Precision Shim
30	720387	Screw
31	7508439	Roller Half, Film Driven
32	7508266	Tire, Drive
33	7508440	Spacer, Film Driven Roller
34	7508467-2	Bearing, Flanged Sleeve, Front, Film Driven
35	7508437	Shaft, Film Driven
24	7508467-1	Bushing, Shaft, Film Driven
24	7508467-1	Bushing, Shaft, Main Drive
38	7508436	Shaft, Jack
39	7508444-2	Worm Gear, Jack Shaft
40	7508443	Shaft, Media Take Up, Lower

PROJECTOR BRACKET



Index	Part No.	Description
1	7508246	Bracket, Projector
2	720349	Pin, Spring
3	7508273	By-Pass Roller Assembly Complete
4	720336	Roller, Film By-Pass
5	720407	Ring, Retaining (2)
6	7508251	Shaft, Roller
7	7508447	Arm, Roller Mounting
8	720455	Screw, Arm, Roller Mounting

AUTOWIND BRACKET



Index	Part No.	Description
1	7508264	Bracket, Platter
2	720349	Pin, Spring
3	7508273	By-Pass Roller Assembly Complete
4	720336	Roller, Film By-Pass
5	720407	Ring, Retaining (2)
6	7508251	Shaft, Roller
7	7508447	Arm, Roller Mounting
8	720455	Screw, Arm, Roller Mounting