

# FILM-TECH

**THE INFORMATION CONTAINED IN THIS ADOBE ACROBAT PDF FILE IS PROVIDED AT YOUR OWN RISK AND GOOD JUDGMENT.**

**THESE MANUALS ARE DESIGNED TO FACILITATE THE EXCHANGE OF INFORMATION RELATED TO CINEMA PROJECTION AND FILM HANDLING, WITH NO WARRANTIES NOR OBLIGATIONS FROM THE AUTHORS, FOR QUALIFIED FIELD SERVICE ENGINEERS.**

**IF YOU ARE NOT A QUALIFIED TECHNICIAN, PLEASE MAKE NO ADJUSTMENTS TO ANYTHING YOU MAY READ ABOUT IN THESE ADOBE MANUAL DOWNLOADS.**

[WWW.FILM-TECH.COM](http://WWW.FILM-TECH.COM)

**LCS Console Lighting Control Module 2.4Kw Instructions****GENERAL**

The Kelmar LCS Console Lighting Control Module is conservatively rated at 2.4 kW. The unit is a compact open Chassis design measuring 12" High, 6-1/4" Wide, and 4" Deep. The LCS Console Lighting Control Module provides 3 Pre-set lighting levels and also includes a full illumination setting that is instantaneous.

**LOCATION/INSTALLATION**

Locate the LCS Console Lighting Control Module in a convenient area in the Projection Console with adequate clearance and air flow.

It is suggested that the Auditorium house lights be divided into 2 branches with individual circuit protection to ensure compliance with local codes. Effectively should one branch trip a breaker due to a defective fixture, the auditorium will not go dark. Each branch must have a neutral wire terminated to the LCS/Console Mount Light Dimmer.

Provide a 120 VAC FEED, Neutral, and Ground from the Projection Room A.C. Panel or Console AC Distribution Point. Provide a 5 conductor #20 control cable to the Automation. If a Dimmer Remote is used, refer to instructions furnished with the remote control. Refer to the Following Drawing for all connections and Dimensions of the Module.

***PROPER OPERATION DEPENDS ON THE CORRECT WIRING AND TERMINATION.***

The LCS Console Lighting Control Module provides 12 VDC control voltage. Control circuits connected are to be dry contact closure. Operation logic requires momentary contact with a minimum 1-second closure.

**SET UP ADJUSTMENT**

After installation, power up the LCS and verify operation. Adjustments are provided for output level and speed rates. These adjustments should be made at the completion of the installation so that auditoriums are finished and reflective surfaces are in place.

***CAUTION: ELECTRICAL SHOCK HAZARD******EXTREME CARE SHOULD BE USED WHEN MAKING THE FOLLOWING ADJUSTMENTS:***

The adjustment pots are Located on the P.C. Board.

The rate and Level adjustment pots are as follows:

R9	DOWN	Rate (speed)
R10	UP	Rate (speed)
R6	HIGH	Level
R7	MID	Level
R8	LOW	Level

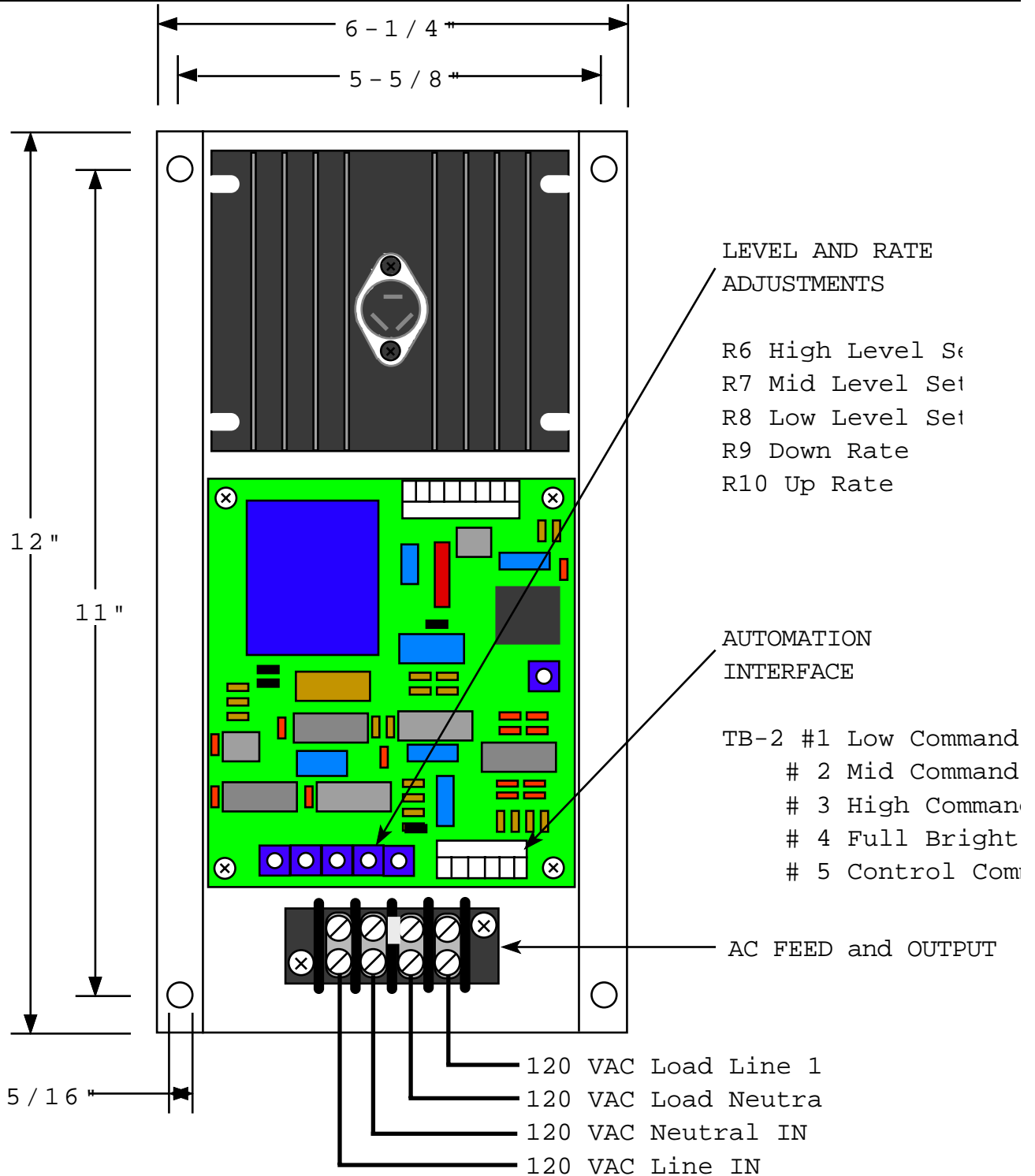
1. Set R9 and R10 Fully Counter-Clockwise for high rate during adjustment.
2. Set the Levels for LO, MID and UP.
3. Set R9 and R10 for a travel of approximately 15 seconds from full down to full up or whatever rate you prefer.

## **OPERATION**

The Automation will control the LCS Console Lighting Control Module for show start, feature, credits, and show end.

For additional information contact:

Kelmar Systems Inc.  
284 Broadway  
Huntington Station, NY 11746-1403  
(631) 421-1230



**Replacement Parts**

Part#	Description
PC7939	Control Board
T4013DK	Output Triac
1552	2.4Kw Torroid