

FILM-TECH

THE INFORMATION CONTAINED IN THIS ADOBE ACROBAT PDF FILE IS PROVIDED AT YOUR OWN RISK AND GOOD JUDGMENT.

THESE MANUALS ARE DESIGNED TO FACILITATE THE EXCHANGE OF INFORMATION RELATED TO CINEMA PROJECTION AND FILM HANDLING, WITH NO WARRANTIES NOR OBLIGATIONS FROM THE AUTHORS, FOR QUALIFIED FIELD SERVICE ENGINEERS.

IF YOU ARE NOT A QUALIFIED TECHNICIAN, PLEASE MAKE NO ADJUSTMENTS TO ANYTHING YOU MAY READ ABOUT IN THESE ADOBE MANUAL DOWNLOADS.

WWW.FILM-TECH.COM

LCS Architectural Series Lighting Control 2.4Kw Instructions

GENERAL

The Kelmar LCS Architectural Series Lighting Control is conservatively rated at 2.4 kW. The unit is a compact 2 piece enclosure measuring 8-1/4" High, 17" Wide, and 4-1/4" Deep for the unit that includes output circuit breakers. Dimensions for the Standard Model not using output circuit breakers is 7" High, 15" Wide, and 4-1/4" Deep. The LCS Console Lighting Control Module provides 3 Preset lighting levels and also includes a full illumination setting that is instantaneous.

LOCATION/INSTALLATION

Locate the LCS Architectural Series Lighting Control in a convenient area in the Projection Booth with adequate clearance and air flow.

It is suggested that the Auditorium house lights be divided into 2 branches with individual circuit protection to ensure compliance with local codes. Effectively should one branch trip a breaker due to a defective fixture, the auditorium will not go dark. Each branch must have a neutral wire terminated to the LCS/Console Mount Light Dimmer.

Provide a 120 VAC FEED, Neutral, and Ground from the Projection Room A.C. Panel. Provide a 5 conductor #20 control cable to the Automation. If a Dimmer Remote is used, refer to instructions furnished with the remote control. Refer to the Following Drawing for all connections and Dimensions of the Module.

PROPER OPERATION DEPENDS ON THE CORRECT WIRING AND TERMINATION.

The LCS Console Lighting Control Module provides 12 VDC control voltage. Control circuits connected are to be dry contact closure. Operation logic requires momentary contact with a minimum .5 second closure.

SET UP ADJUSTMENT

After installation, power up the LCS and verify operation. Adjustments are provided for output level and rates (speed). These adjustments should be made at the completion of the installation so that auditoriums are finished and reflective surfaces are in place so that proper illumination levels can be set.

***CAUTION: ELECTRICAL SHOCK HAZARD
EXTREME CARE SHOULD BE USED WHEN MAKING
THE FOLLOWING ADJUSTMENTS***

The adjustment pots are Located on the P.C. Board as indicated on page 3 of these instructions

The rate and Level adjustment pots are as follows:

R9	DOWN	Rate (speed)
R10	UP	Rate (speed)
R6	HIGH	Level
R7	MID	Level
R8	LOW	Level

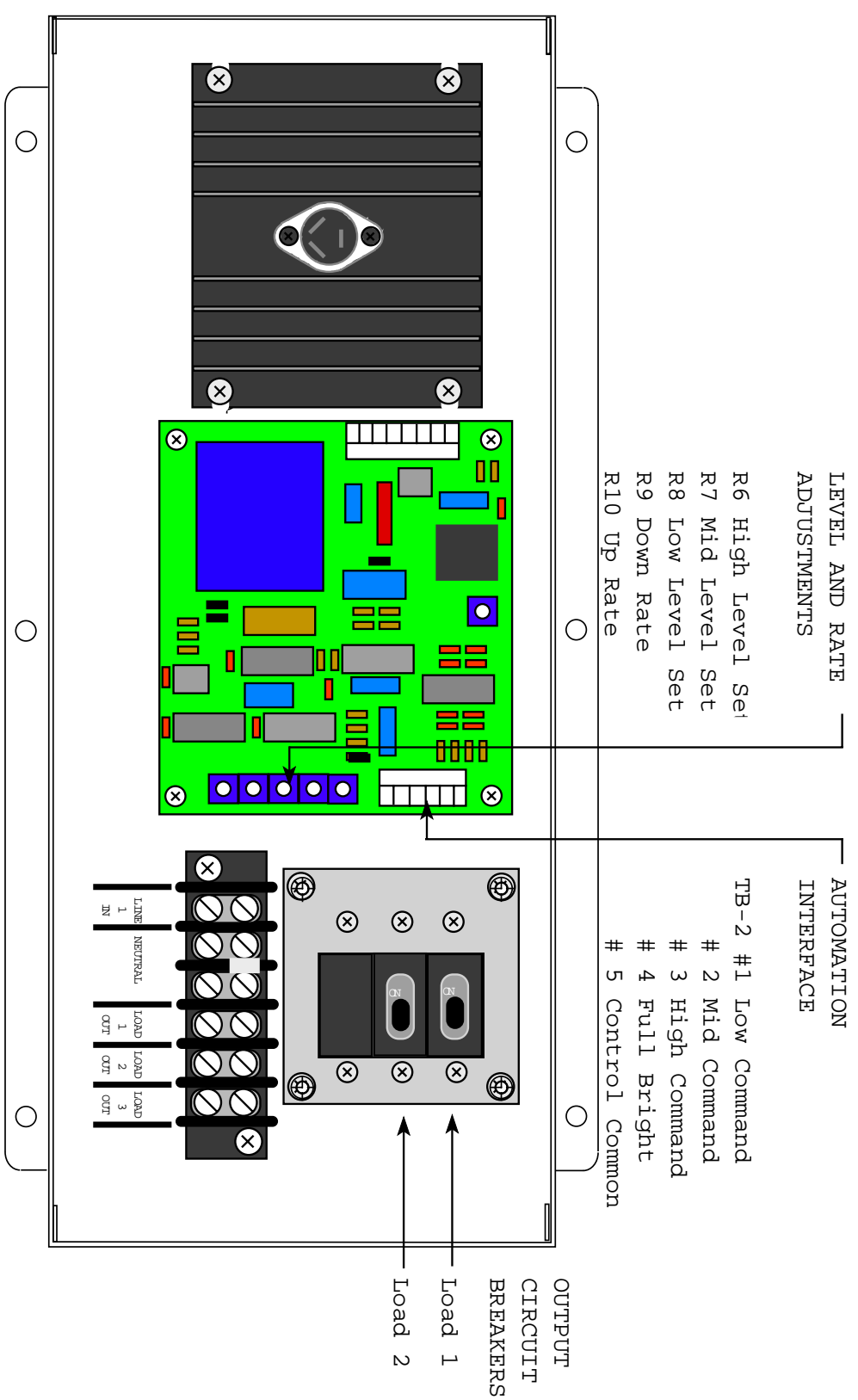
1. Set R9 and R10 Fully Counter-Clockwise for fastest rate during level adjustments.
2. Set the Levels for LO, MID and UP.
3. Set R9 and R10 for a travel of approximately 15 seconds from full down to full up or whatever rate you prefer.

OPERATION

The Theaters Automation will control the LCS Console Lighting Control Module for show start, feature, credits, and show end. If required the dimmer may also be controlled by another control source for Instant Full Illumination of the Auditorium

For additional information contact:

Kelmar Systems Inc.
284 Broadway
Huntington Station, NY 11746-1403
(631) 421-1230



Replacement Parts

Part#	Description
PC7939	Control Board
T4013DK	Output Triac
XF1552	2.4Kw Torroid
ADCB15A	15 Amp Circuit Breaker