

# FILM-TECH

**THE INFORMATION CONTAINED IN THIS ADOBE ACROBAT PDF FILE IS PROVIDED AT YOUR OWN RISK AND GOOD JUDGMENT.**

**THESE MANUALS ARE DESIGNED TO FACILITATE THE EXCHANGE OF INFORMATION RELATED TO CINEMA PROJECTION AND FILM HANDLING, WITH NO WARRANTIES NOR OBLIGATIONS FROM THE AUTHORS, FOR QUALIFIED FIELD SERVICE ENGINEERS.**

**IF YOU ARE NOT A QUALIFIED TECHNICIAN, PLEASE MAKE NO ADJUSTMENTS TO ANYTHING YOU MAY READ ABOUT IN THESE ADOBE MANUAL DOWNLOADS.**

**[WWW.FILM-TECH.COM](http://WWW.FILM-TECH.COM)**

**16 X 24 ISO Portframe Installation Instructions**

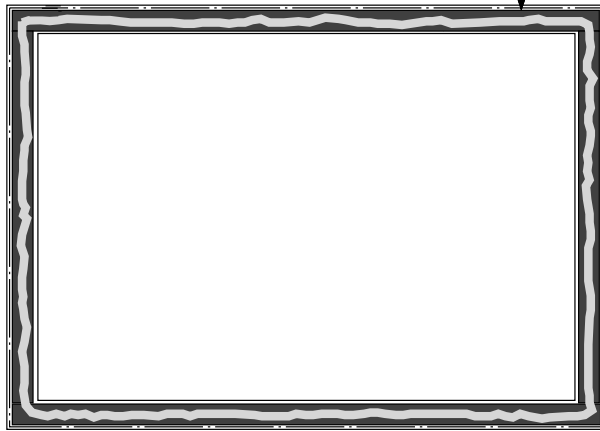
**Please review instructions before installing this product**

**Step 1:** Make sure all mounting surfaces are clean and free of Dust.

**Step 2:** Apply a bead of sealant to the mounting flange gasket on the Auditorium Frame Half. **THIS ADDS ADDITIONAL INTEGRITY TO THE SEAL (SEE DETAIL #1)**

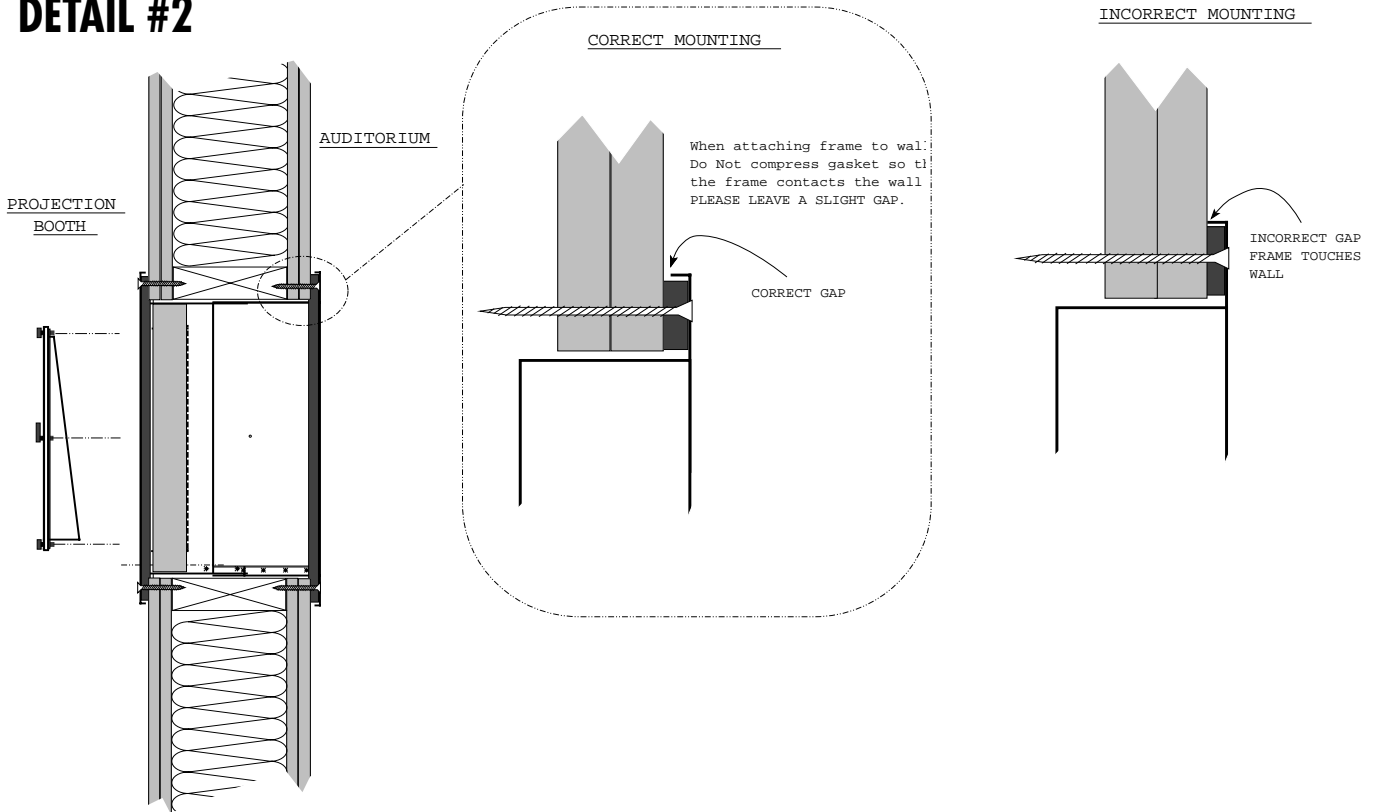
**DETAIL #1**

APPLY A BEAD OF SILICONE SEALANT TO THE FACE OF FRAME SEALING GASKET



**Step 3:** Mount the Auditorium Frame Half. (SEE DETAIL #2)

**DETAIL #2**



**Step 4:** Apply a bead of Silicone Based Caulks to the mounting flange gasket on the Projection Room Frame Half. THIS ADDS ADDITIONAL INTEGRITY TO THE SEAL

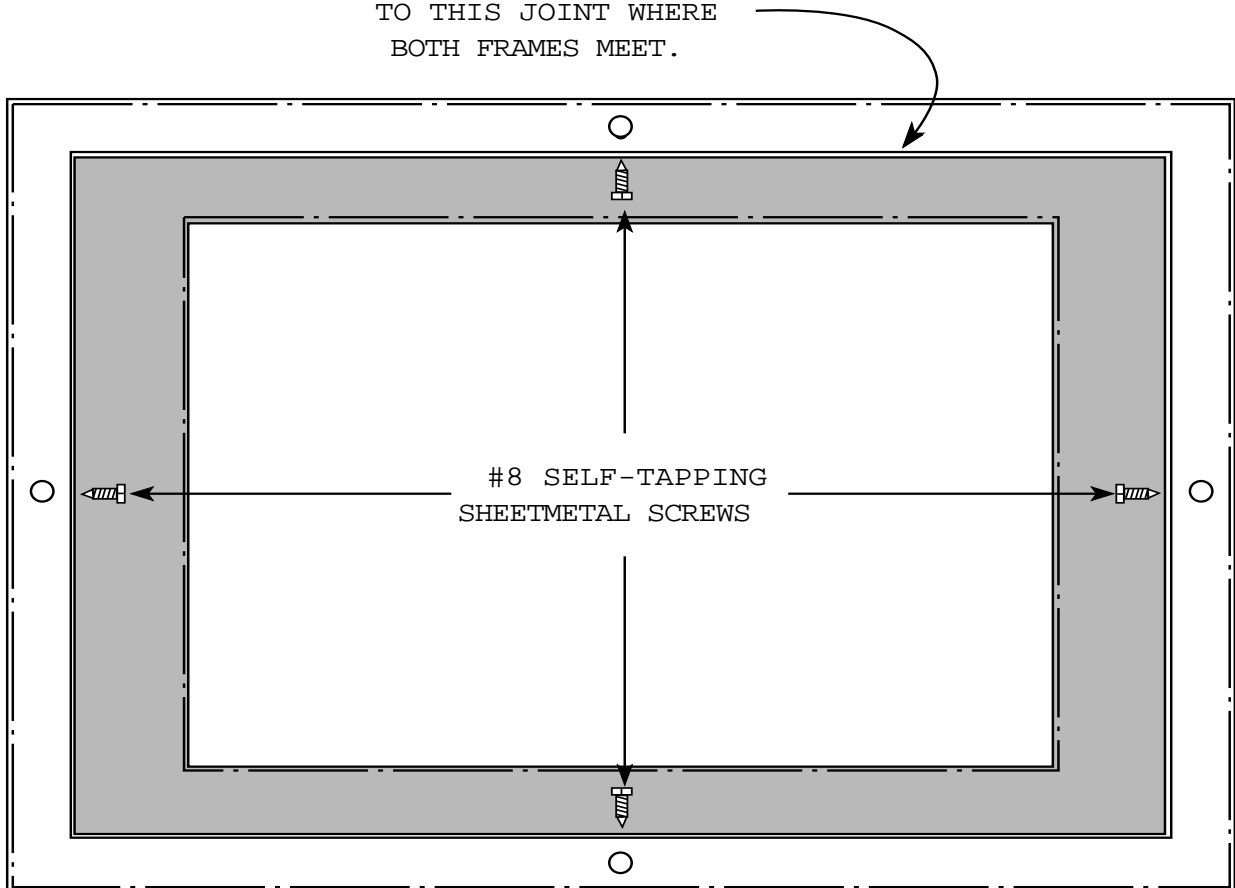
**Step 5:** Mount the Projection Room Frame Half. (SEE DETAIL #2)

**Step 6:** After both frames have been secured to the wall, take (4) #8 Self-tapping screws and use them to fasten the Two frames halves together. (SEE DETAIL #3)

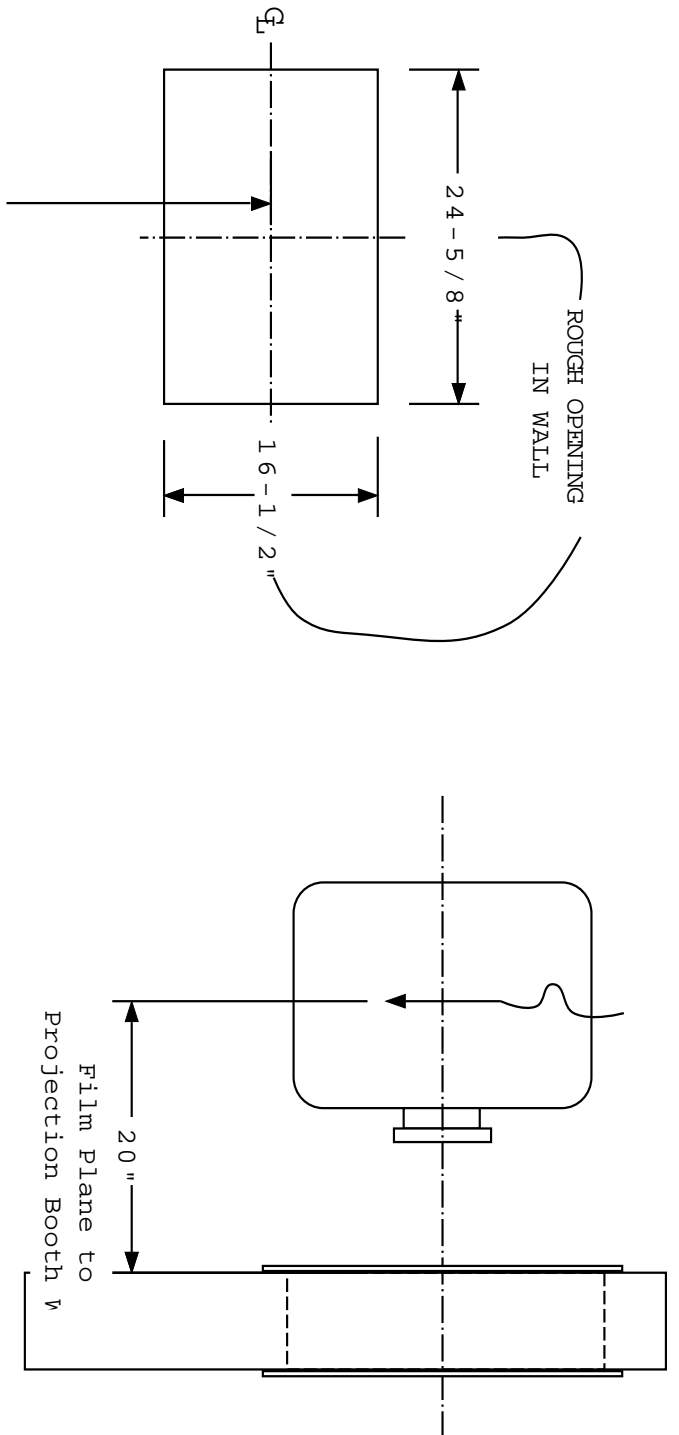
**Step 7:** After both frames have been secured to per step 5. Seal the Mating Joint of the Two Frame Halves with a Silicone Based Caulk. THIS ADDS ADDITIONAL INTEGRITY TO THE SEAL. (SEE DETAIL #3)

### DETAIL #3

APPLY SILICONE SEALANT  
TO THIS JOINT WHERE  
BOTH FRAMES MEET.



AS VIEWED FROM AUDITORIUM



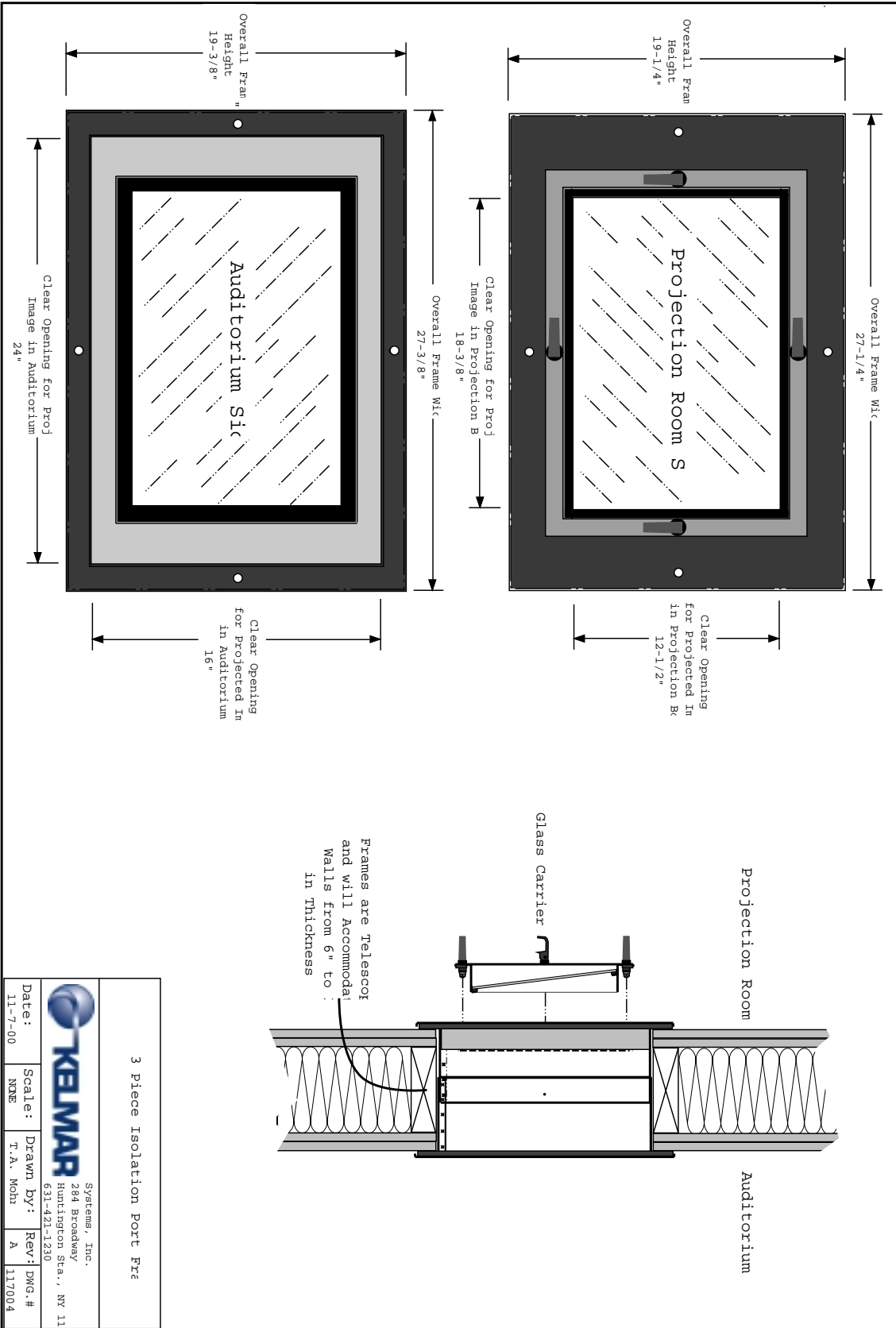
See Note "A"

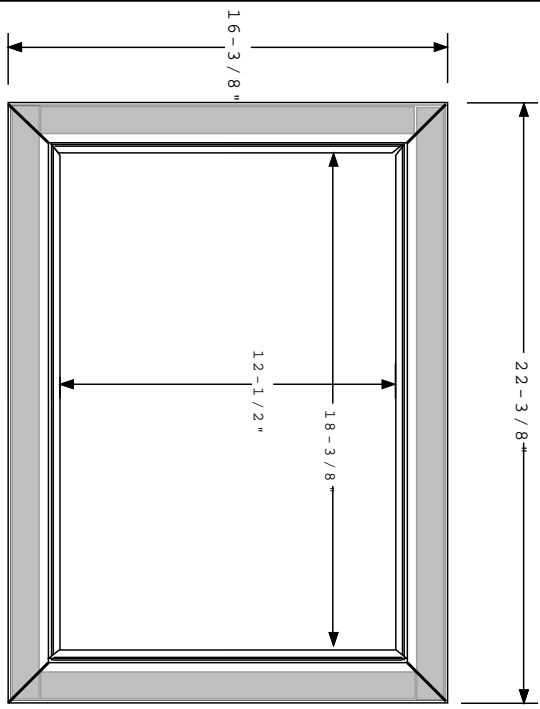
Notes:

A: 48" for "0" Degree Projection Angle, Reduce by 1/2" degree of pitch. ie: 3 degrees of downward pitch sha a Projection Port Centerline height of 46-1/2" A.F.I

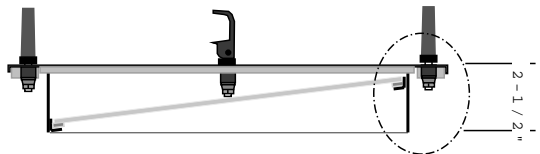
FINISHED BOOTH FLOOR

Porthole Frame Roughing Detail

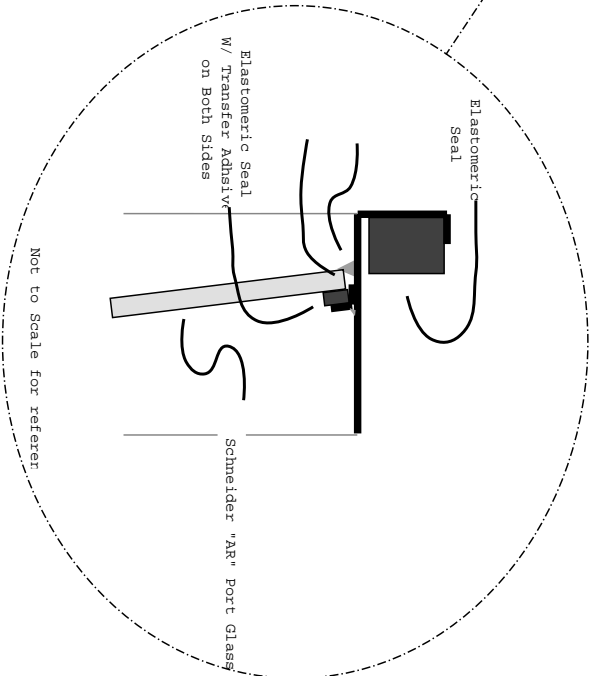




Glass Carrier  
FRONT VIEW

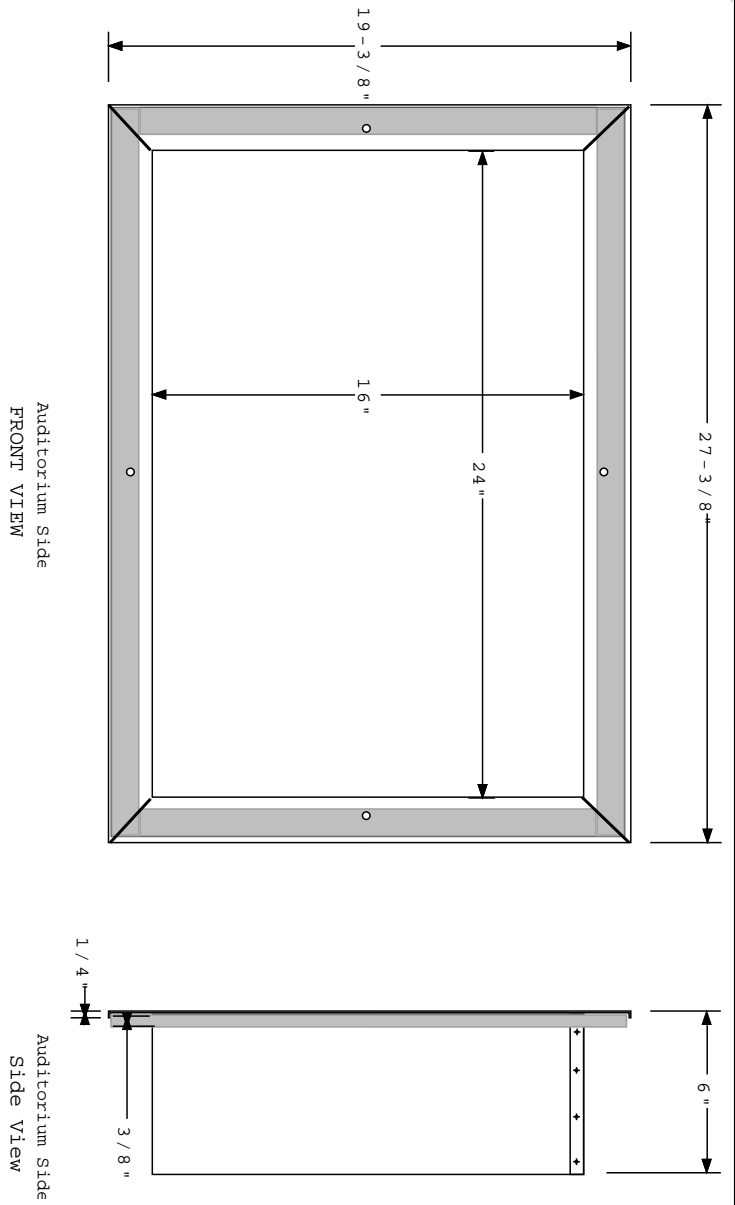



Glass Carrier  
Side View




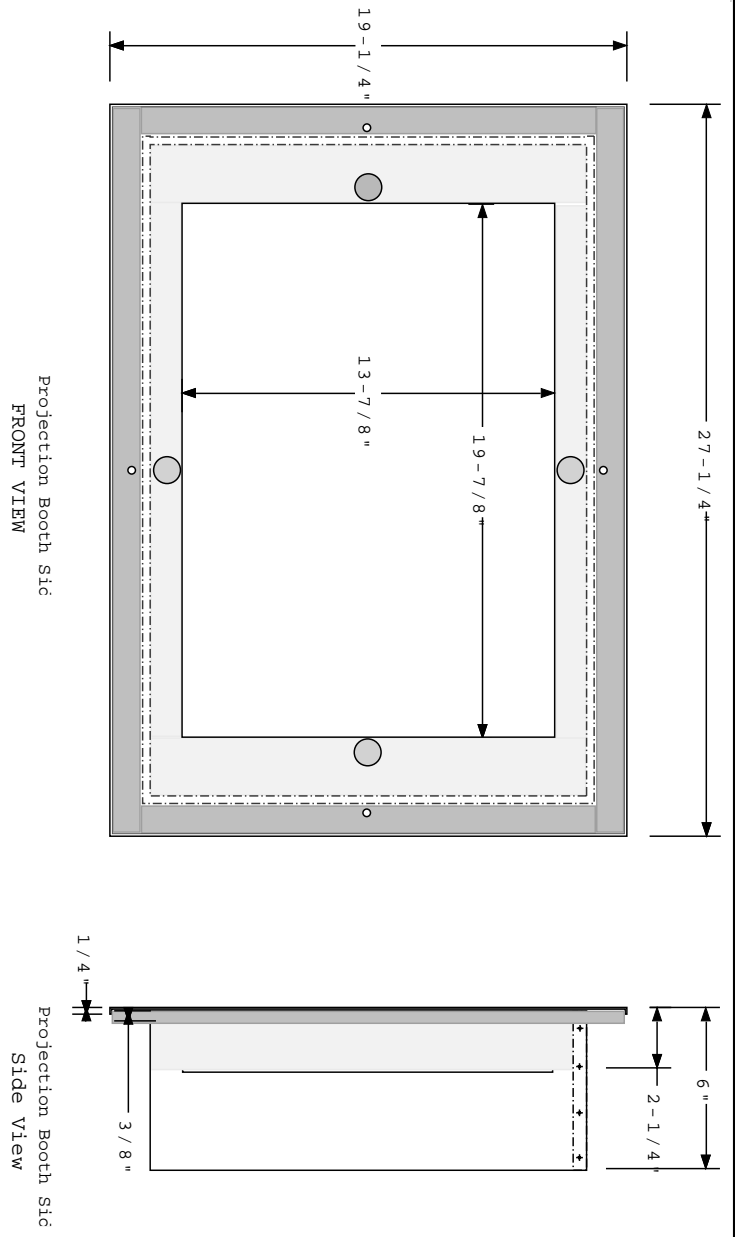
Legend:  
 = Poron Elastomeric Seal

Auditorium Portion of 3 Piece Isolation Port Frame			
Systems, Inc. 284 Broadway Huntington Sta., NY 11703 631-421-1230			
Date:	Scale:	Drawn By:	Rev:
11-7-00	3"=1'	T. A. Mohr	A
			117003



Legend:  
 = Poron Elastomeric Se

			
Auditorium Portion of 3 Piece Isolation Port Frm			
Systems, Inc. 284 Broadway Huntington Sta., NY 11			
Date:	Scale:	Drawn By:	Rev:
11-7-00	3"=1'	T. A. Mohr	A
			DWG.#
			117002



- Legend:
- = Poron Elastomeric Seal
  - = Acoustic Foam for Sound Dampen

Projection Booth Portion 3 Piece Isolation Port Frc			
Systems, Inc. 284 Breakway Huntington Sea., NY 11			
Date:	Scale:	Drawn By:	Rev: DWG.#
11-7-00	3"-1'	T.A. Mohn	A 117001