

FILM-TECH

THE INFORMATION CONTAINED IN THIS ADOBE ACROBAT PDF FILE IS PROVIDED AT YOUR OWN RISK AND GOOD JUDGMENT.

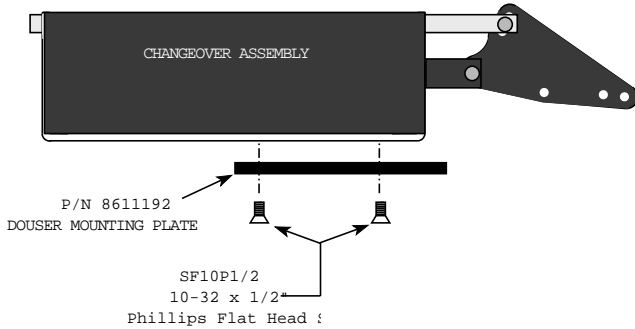
THESE MANUALS ARE DESIGNED TO FACILITATE THE EXCHANGE OF INFORMATION RELATED TO CINEMA PROJECTION AND FILM HANDLING, WITH NO WARRANTIES NOR OBLIGATIONS FROM THE AUTHORS, FOR QUALIFIED FIELD SERVICE ENGINEERS.

IF YOU ARE NOT A QUALIFIED TECHNICIAN, PLEASE MAKE NO ADJUSTMENTS TO ANYTHING YOU MAY READ ABOUT IN THESE ADOBE MANUAL DOWNLOADS.

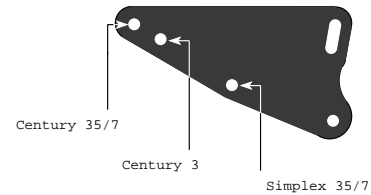
WWW.FILM-TECH.COM

Electric Changeover Instructions

Basic Assembly Detail

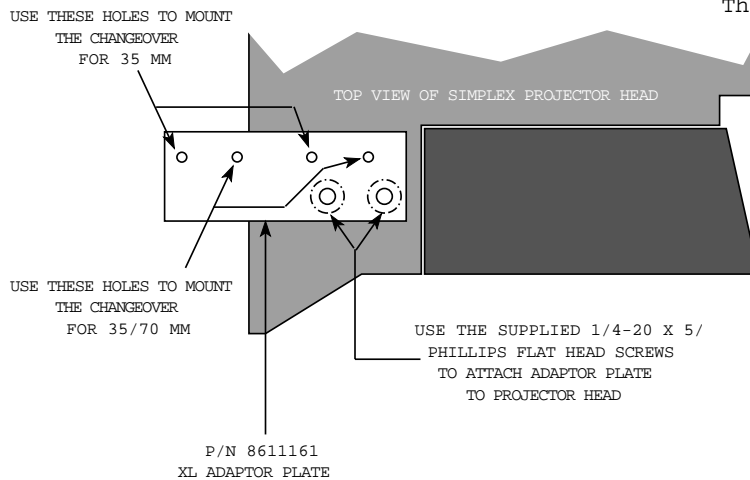


Universal Bell Crank



Use appropriate holes as shown for proper clearance, geometry and douser travel

Mounting Details for ECS35/70



Orientation of XL Douser Link

This End Attaches to Bell



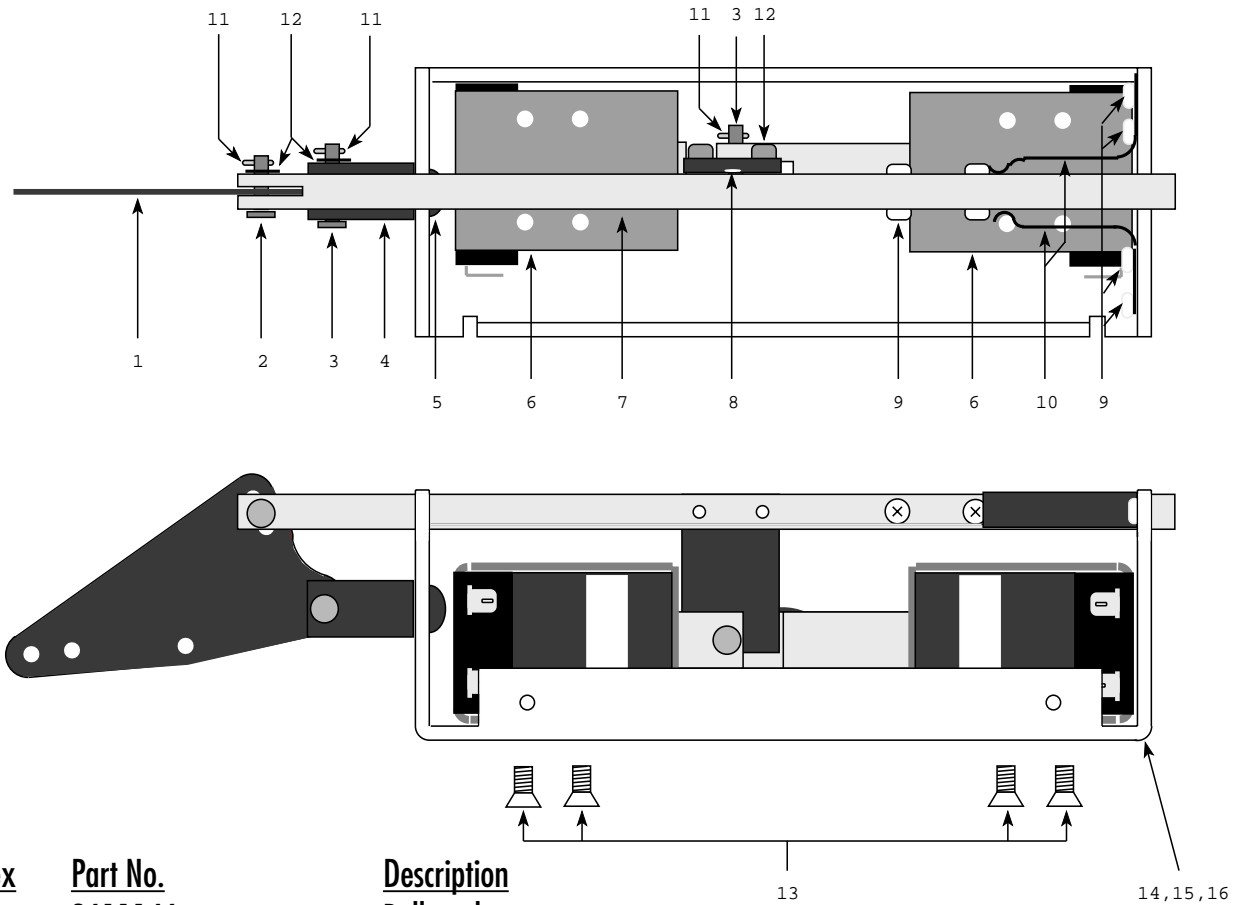
After Inserting into Bell
Secure with
#4 Washer and Cotter Pi

This End Attaches to Douser:

Remove the Old Connector from the Douser F
Then Insert this End and Secure wit
#4 Washer and Cotter Pin.

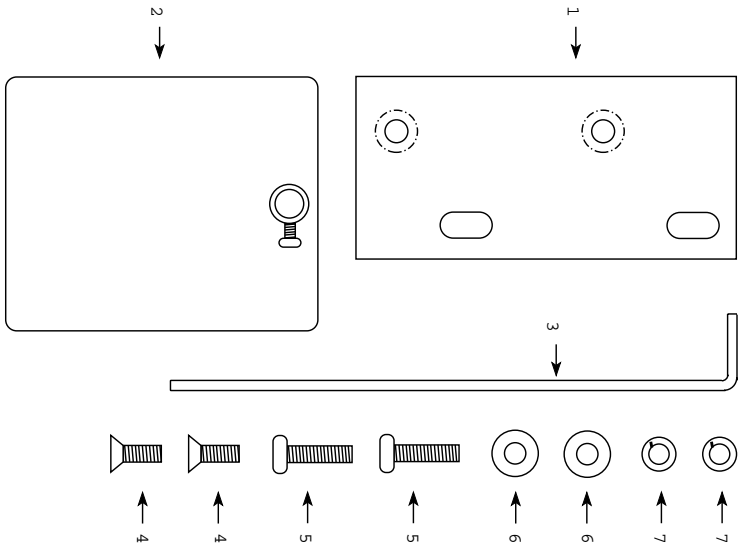
Electrical Connections:

- Green** - **Ground**
- White** - **Common**
- Black** - **Open**
- Red** - **Close**



<u>Index</u>	<u>Part No.</u>	<u>Description</u>
1	8611146	Bellcrank
2	MS-20392-1C-15	Clevis Pin, .125 Dia (E.L. = .469)
3	MS-20392-1C-17	Clevis Pin, .125 Dia (E.L. = .531)
4	8611145	Pivot, Bellcrank
5	SHBCS10x3/8	Screw, 10-32 x 3/8" Button Head Allen
6	S4-3008	Solenoid, Coil 120 VAC
	S4-3009	Solenoid, Coil 240 VAC
	S4-3016	Solenoid, Coil 24 VAC
7	8611144	Push Rod
8	8611147	Connector
9	SP4P1/8	Screw, 4-40 x .125 Phillips Pan Head
10	8611148	Spring
11	MS-24665-1010	Cotter Pin, .062 Dia
12	SHCS6x3/8	Screw, 6-32 x .375 Socket Head Cap
13	SP8F1/4	Screw, 8-32 x .250 Phillips Flat Head
14	8611190	Chassis
15	8611191	Cover
16	SP6P1/4	Screw, 6-32 x .250 Phillips Pan Head (4)

ECC-35/SA & ECC-70 Hardware Kit



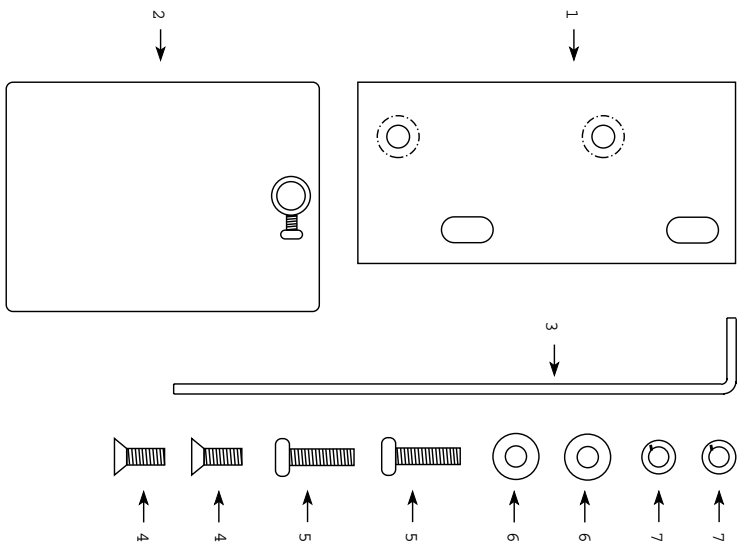
Index	Part No.	Description
1	8611192	Changeover Mounting Plate
2	8611193-1	Douser Plate Assembly 35 MM "SA"
3	8611154	Douser Plate Assembly 70 MM "JJ"
4	8611165	Link for Douser Plate 35 MM "SA"
5	SFT0P1/2	Link for Douser Plate 70 MM "JJ"
6	SP10P5/8	Screw, 10-32 x 1/2" Phillips Flat Head
7	WAL10	Screw, 10-32 x 5/8" Phillips Pan Head

Complete Kit

Part No.	Description
8611141-1	ECC-35/SA Hardware Kit
8611143	ECC-70 Hardware Kit

Includes all of the listed parts

ECC-35/C Hardware Kit



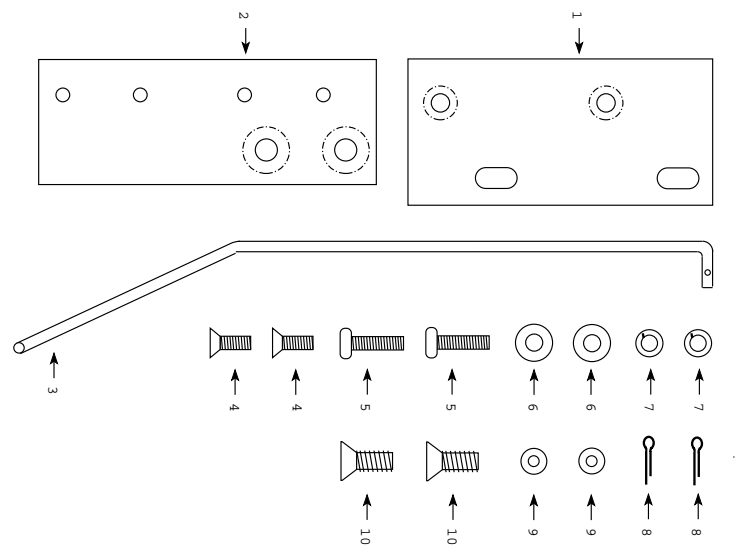
Index	Part No.	Description
1	8611192	Changeover Mounting Plate
2	8611193-2	Douser Plate Assembly 35 MM "C"
3	8611154	Douser Plate Assembly 70 MM "JJ"
4	SFT0P1/2	Link for Douser Plate 35 MM
5	SP10P5/8	Link for Douser Plate 70 MM "JJ"
6	WAL10	Screw, 10-32 x 1/2" Phillips Flat Head
7	WAL10	Screw, 10-32 x 5/8" Phillips Pan Head

Complete Kit

Part No.	Description
8611141-2	ECC-35/C Hardware Kit

Includes all of the listed parts

ECS-35/70 Hardware Kit



Index	Part No.	Description
1	8611192	Changeover Mounting Plate
2	8611161	XL Adaptor Plate
3	8611164	Link for Douser Plate "XL"
4	SFT0P1/2	Screw, 10-32 x 1/2" Phillips Flat Head
5	SP10P5/8	Screw, 10-32 x 5/8" Phillips Pan Head
6	WAL10	Washer, #10 Flat
7	WAL10	Washer, #10 Split Lock
8	MS-24665-10	Washer, #4 Flat
9	WAA4	Cotter Pin
10	SF25P5/8	Screw, 1/4-20 x 5/8" Phillips Flat Head

Complete Kit

Part No.	Description
8611142	ECS-35/70 Hardware Kit

Includes all of the listed parts