

FILM-TECH

THE INFORMATION CONTAINED IN THIS ADOBE ACROBAT PDF FILE IS PROVIDED AT YOUR OWN RISK AND GOOD JUDGMENT.

THESE MANUALS ARE DESIGNED TO FACILITATE THE EXCHANGE OF INFORMATION RELATED TO CINEMA PROJECTION AND FILM HANDLING, WITH NO WARRANTIES NOR OBLIGATIONS FROM THE AUTHORS, FOR QUALIFIED FIELD SERVICE ENGINEERS.

IF YOU ARE NOT A QUALIFIED TECHNICIAN, PLEASE MAKE NO ADJUSTMENTS TO ANYTHING YOU MAY READ ABOUT IN THESE ADOBE MANUAL DOWNLOADS.

WWW.FILM-TECH.COM



ELMO

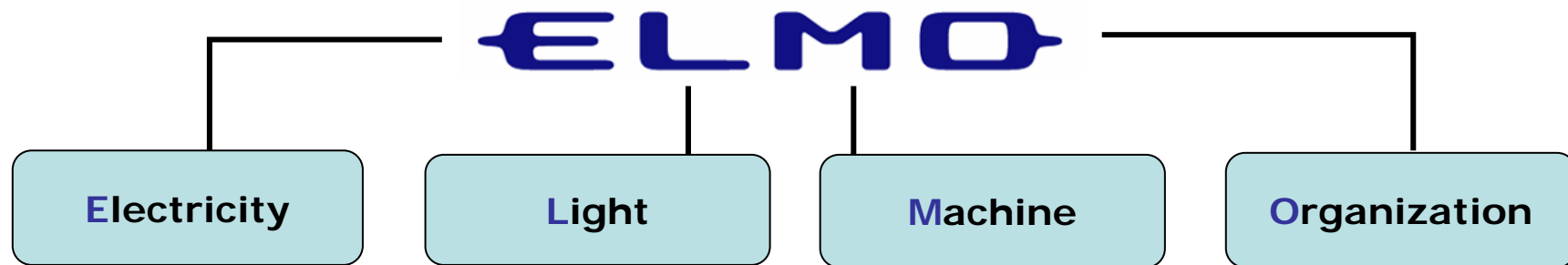
FOCUS ON THE FUTURE

Corporate Profile



Oct,2005

Elmo Means



Since established in 1921 ,
we have been supplying new visual products for all over the world.

We commit to ...

our persistent development effort makes us growing continuously.
our new products will bring you to the new world.

Focus on the future



Overview

Name	Elmo Company,Limited
Founded	April 10 , 1921
CEO	Kiyoshi Takeuchi
Employee	311 (As of March , 2005)
Capital	450 million yen
Revenues	90.0 billion yen (2004)
Business Area	<p>Manufacture and sales of optical devices , electric AV appliances and precision devices</p> <ul style="list-style-type: none"> - CCD camera systems - Document camera systems - audio and visual system controller



Major Products

CCD camera



Visual Presenter



IP camera system



LCD projector



AV system controller



Office & Group

Domestic

Head Office & Factory

6-14, Meizen-cho, Mizuho-ku, Nagoya Tel: 052-811-5133

Sales Office

Tokyo Osaka Fukuoka Sapporo Sendai Hiroshima

Overseas

ELMO USA CORP. (New York, USA)

ELMO CANADA MFG. CORP. (Toronto, Canada)

ELMO (EUROPE) G.m.b.H. (Duesseldorf, Germany)



History

- 1921 Founded as “Sakaki Shokai” Started manufacture of photographic equipment
- 1927 **Started sales of model A 16 mm cine-projectors**
 (the first 16mm cine-projector made in Japan.)
- 1933 ELMO & Co. established
- 1936 **Started sales of model “Hayabusa” 8mm cine-projectors**
- 1938 Started sales of model “ELMO Flex I” twin-lens reflex cameras
- 1949 ELMO Co., Ltd. established
- 1951 **Started sales of model 51 slide film projectors**
 (Awarded the Minister of International Trade and Industry award)
- 1954 Certified by the Ministry of International Trade and Industry for JIS
 Started sales of model E-80 the first-postwar 8mm cine-projectors
- 1955 Started sales of model 8-A the first-postwar 8mm cine-cameras
- 1960 **Started sales of model 8-E the first-in-Japan**
 “with Zoom lens, with Auto-iris, and Battery-powered” 8mm cine-cameras
- 1970 **Established overseas subsidiaries in Canada and Germany**
- 1973 **Established overseas subsidiary in USA**
- 1975 Started sales of 8mm sound cine-cameras
- 1984 **Started sales of CCD Black & White video cameras**
- 1986 Started sales of Film-to-Video converters

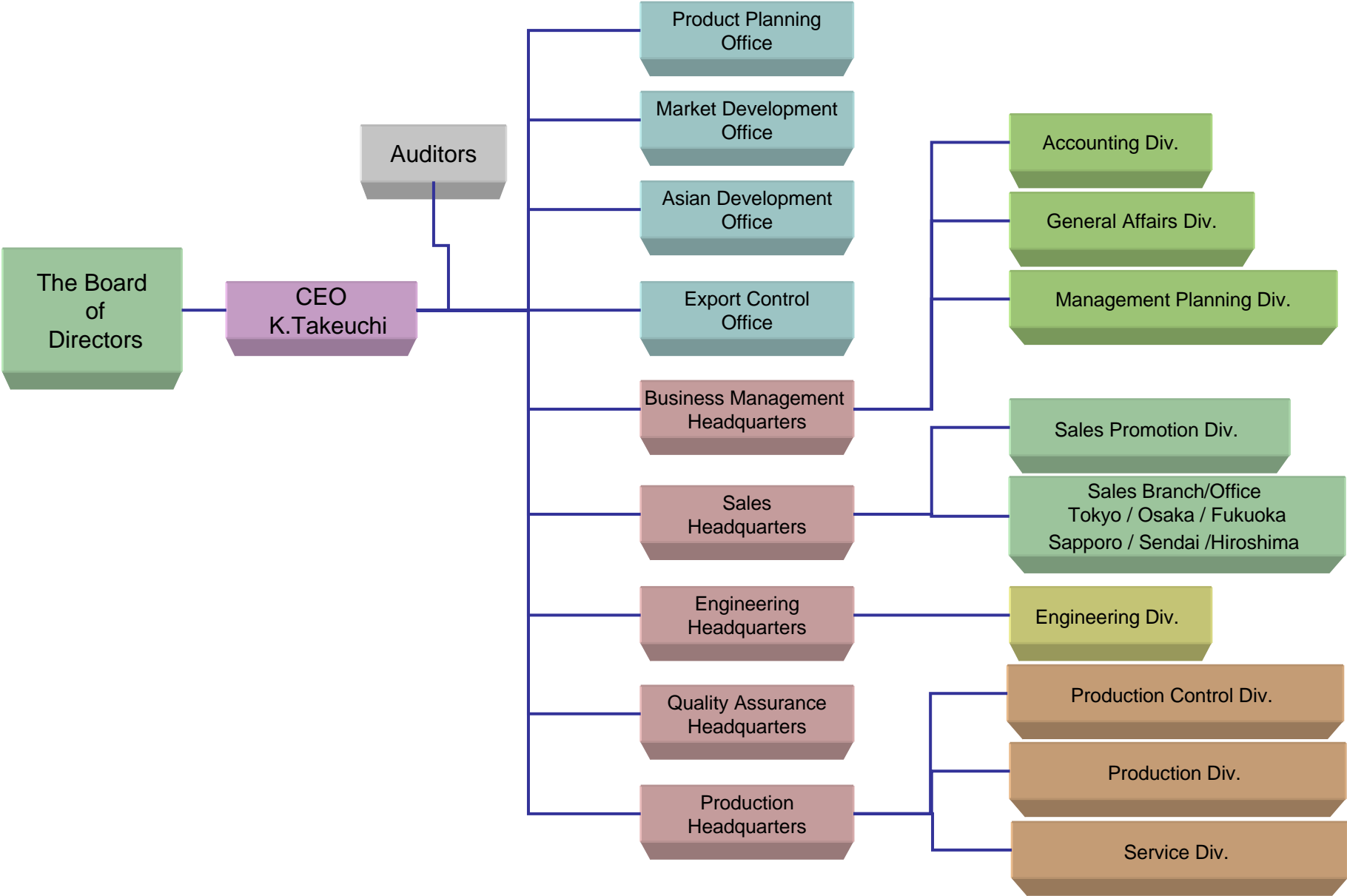


History

- 1987 **Started sales of model EM-101 CCD Color video micro-cameras**
- 1988 **Started sales of “CVAS” (Computer-assisted Audio Visual System)**
Started sales of Visual Presenters (Document Camera)
- 1990 Started sales of 6 models of OHPs (Overhead Projectors)
- 1992 Started sales of model UN401 ultra-micro video cameras
- 1995 **Certified for ISO9002 (Quality management system)**
- 1996 **Started sales of model EDP-2000/2200 LCD data projectors**
- 1997 Started sales of model 42H Remote-head micro-cameras
- 2001 **Certified for ISO14001 Approved inspection for ISO9001: 2000**
- 2002 Started sales of HV-110XG Mobile Presenter
Started sales of PTC-200C PTZ Camera
- 2003 **Started sales of PTC-201C IP Network & PTZ Camera**
Started sales of EDR-X1 Digital Video Recorder
Started sales of HV-5100/5600XG High-resolution Presenters
- 2004 Started sales of HV-C1000XG Ceiling Presenter
Started sales of EDR901 Network DVR
- 2005 **Started sales of P30 High Resolution Presenter**
Started sales of various Solution Systems
Started sales of various Network Cameras & Monitoring software



Organization





Thank you!

ELMO

FOCUS ON THE FUTURE