

Film-Tech

The information contained in this Adobe Acrobat pdf file is provided at your own risk and good judgment.

These manuals are designed to facilitate the exchange of information related to cinema projection and film handling, with no warranties nor obligations from the authors, for qualified field service engineers.

If you are not a qualified technician, please make no adjustments to anything you may read about in these Adobe manual downloads.

www.film-tech.com



Dolby Laboratories Inc

Field Bulletin 226

No Sound After Reversion from Digital to Analog DA20 with Model SA10 Installed

- | |
|--|
| <input type="checkbox"/> Modification Urgent |
| <input type="checkbox"/> Modification Required |
| <input checked="" type="checkbox"/> Modification Recommended |
| <input type="checkbox"/> Modification if Problem is Present |
| <input type="checkbox"/> Information Bulletin |

Symptom

The DA20 reverts normally (switches to no output signal) however, the CP65 or CP55 remains in format 10 (digital), resulting in loss of sound in the auditorium. The problem appears after an SA10 is installed with the CP65/55 and DA20 system.

This symptom will occur only if a Cat. No. 611A card is installed in the DA20.

Cause

Resistors located on the Cat. No. 611A prevent the reversion command generated by the DA20 from being accepted by the CP65/55. The CP65/55 will not switch to format 05 (SR).

Solution

The solution involves shorting four surface-mount resistors on the Cat. No. 611A board.

1. Confirm that a Cat. No. 611A is installed. Original Cat. No. 611s do not show this problem and therefore no work is necessary.

Using a flashlight, look into the vertical window on the right side of the DA20 front panel. Check the front edge of the board.

A Cat. No. 611A board is clearly labeled "Cat. No. 611A" and a printed white block appears in front of the center three rotary switches (soundhead delay adjustments).



Signal Processing and Noise Reduction Systems

100 Potrero Avenue
San Francisco, California 94103-4813
Telephone 415-558-0200
Facsimile 415-863-1373
www.dolby.com

Wootton Bassett
Wiltshire SN4 8QJ
Telephone (44) 1793-842100
Facsimile (44) 1793-842101

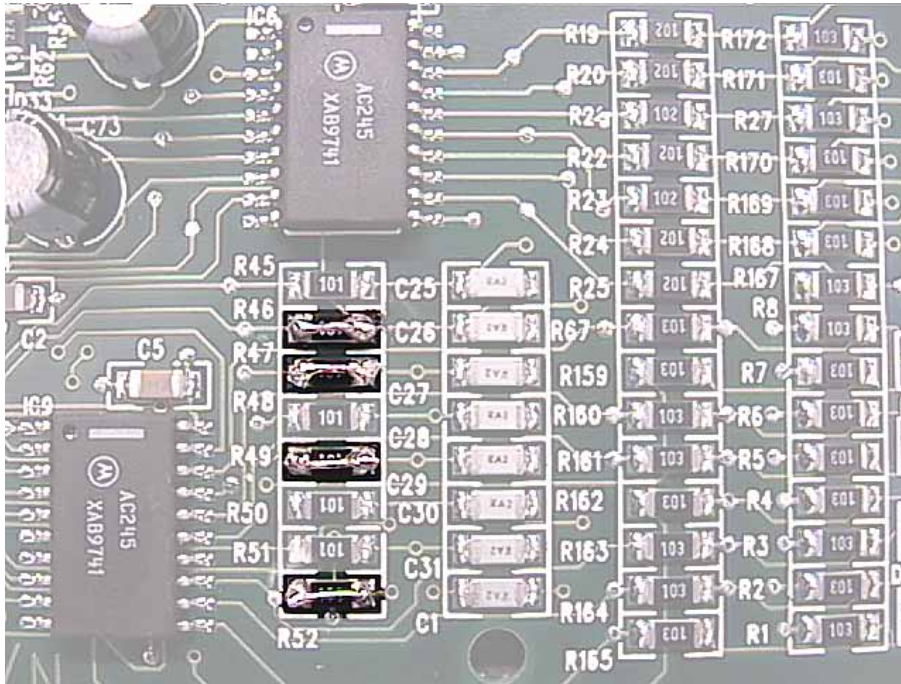
Issue 1
S99/12648
July 12, 1999

2. Remove the Cat. No. 611A:

Remove the 12 screws holding the DA20 front panel and remove the panel.

Remove the Cat. No. 611A from the right-hand slot of the DA20.

3. Hold the card with the components facing you and the card edge connector facing the right.



4. Find the short column of surface-mount resistors located toward the bottom of the card as shown in the photograph.

5. Using a low-wattage soldering iron (35W or less) and a very thin piece of wire, short resistors **R46, R47, R49 and R52**. Link across the body of each resistor. If you use too much heat, the resistor may inadvertently unsolder. If this happens, carefully use the same thin wire to jumper the remaining two solder pads on the board.

6. Re-insert the board into the DA20 and re-install the front panel.