

Film-Tech

The information contained in this Adobe Acrobat pdf file is provided at your own risk and good judgment.

These manuals are designed to facilitate the exchange of information related to cinema projection and film handling, with no warranties nor obligations from the authors, for qualified field service engineers.

If you are not a qualified technician, please make no adjustments to anything you may read about in these Adobe manual downloads.

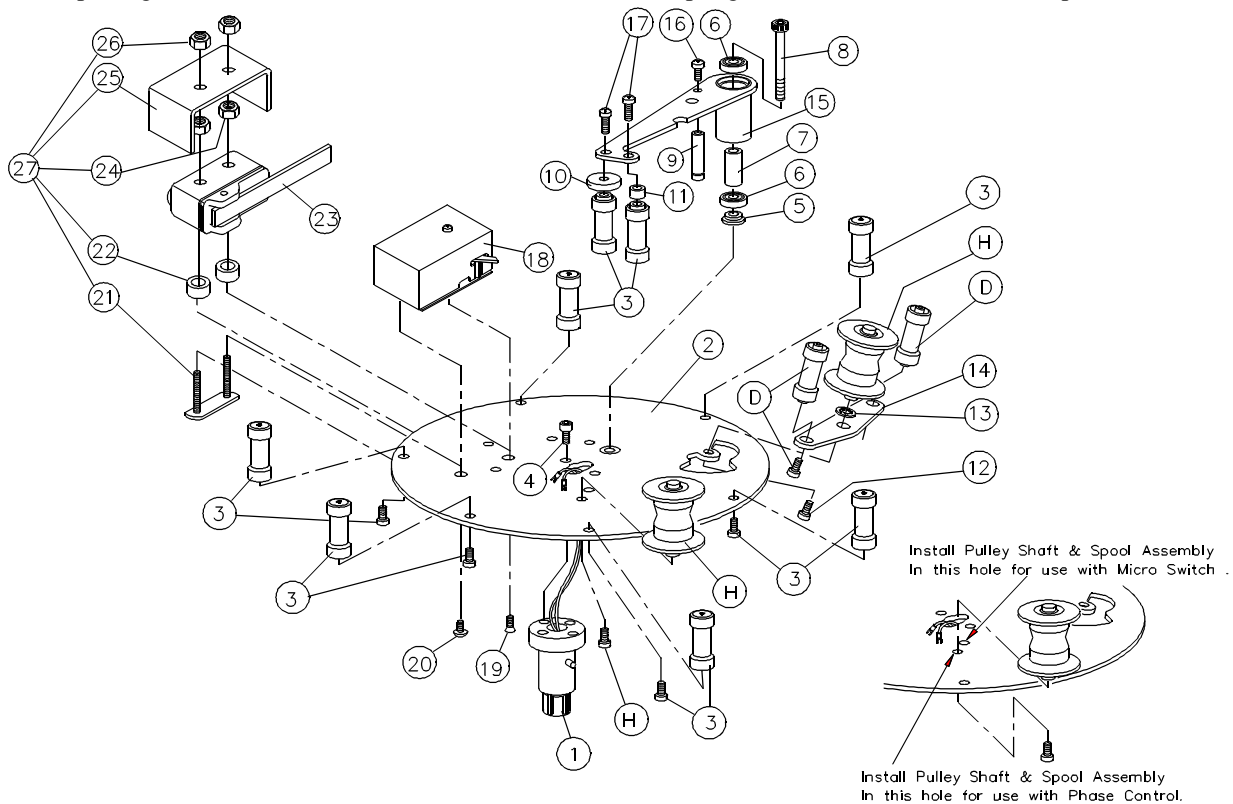
www.film-tech.com

Plug-In 35mm MIC #3044 and Plug-In 35mm PHC #3070 Control Plate Assembly Parts List

PRODUCT INFORMATION BULLETIN #2150

NOTE: #3044 Control Plate Assembly Plug-in 35mm MIC and #3070 Control Plate Assembly Plug-in 35mm PHC can be used on older systems that do not have plug-in spindles. Disconnect the red and blue wire from the switch terminals. Unbolt the plug-in hub (item 1 below) from the bottom of the control plate.

NOTE: When replacing #2536, Micro Switch-Flat Blade-HD, remove the spring from behind the switch arm if present.



- | | |
|--|--|
| D) 2602 Keeper Shaft & Spool Assembly | 13) 1078 Lockwasher #10-Internal Tooth |
| H) 1774 Pulley Shaft #5 & Pulley Assy. 35mm | 14) 1548 Control Plate Spool Keeper Bracket |
| 1) 2357 Control Plate Plug-in Adapter
(includes item 4) | 15) 1691 Control Plate Sensor Arm & Hub |
| 2) 1593 Control Plate & Nut Sub-Assy. 35mm | 16) 1069 Screw PTH 8-32 x 3/8" |
| 3) 1513 Control Plate Spool & Shaft Assy. | 17) 2181 Screw PPH 10-32 x 3/4" |
| 4) 1064 SHCS 8-32 x 3/8" | 18) 2430 Phase Control W/Mount Package
(Includes items 19 & 20) |
| 5) 2380 Control Plate Sensor Arm Washer | 19) 1070 Screw PFH 8-32 x 3/8" |
| 6) 2407 Bearing 5/8 OD x 1/4 ID | 20) 1069 Screw PTH 8-32 x 3/8" |
| 7) 2379 Control Plate Sensor Arm Spacer | 21) 1469 Switch Adjusting Plate |
| 8) 2408 SHCS 1/4-28 x 2" | 22) 1240 Spacer 5/16" x 13/64" x 1/4" |
| 9) 1265 Shaft #9 | 23) 2536 Micro Switch-Flat Blade-HD |
| 10) 2006 Control Plate Arm Film Spacer | 24) 1083 Hex Nut, 6-32 |
| 11) 1153 Control Plate Arm Spool Spacer Float | 25) 1595 Control Plate Switch Cover |
| 12) 1592 SHCS 10-32 x 1/2" | 26) 1084 Locknut, Nylon Insert 6-32 |
| | 27) 3610 Micro Switch Mount Hardware |