

Film-Tech

The information contained in this Adobe Acrobat pdf file is provided at your own risk and good judgment.

These manuals are designed to facilitate the exchange of information related to cinema projection and film handling, with no warranties nor obligations from the authors, for qualified field service engineers.

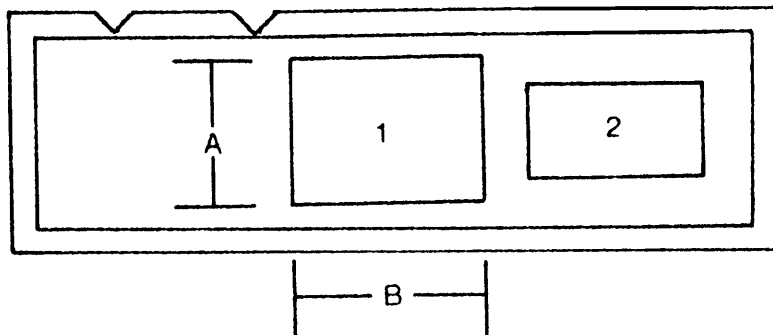
If you are not a qualified technician, please make no adjustments to anything you may read about in these Adobe manual downloads

www.film-tech.com



V-10, V-4 and older V-8

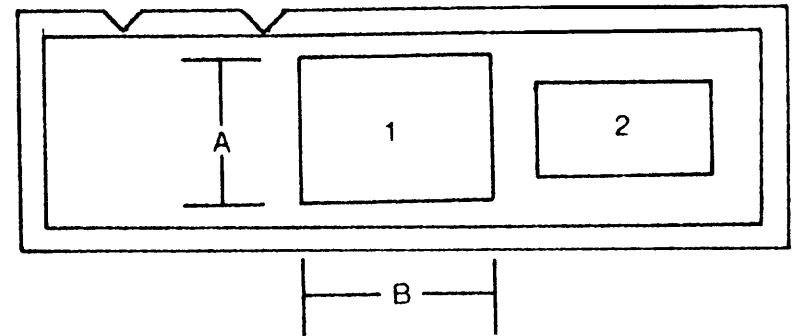
APERTURE PLATE SPECIFICATIONS



PART NO.	RATIOS		DIMENSIONS mm				DIMENSIONS inches				
			1		2		1		2		
	1	2	a	b	a	b	a	b	a	b	
00214	Blank										
00214/40 ●	Pin Holes										
00214/ 1 ●	2.35	1.85	17.50	20.80	11.05	20.45	.690	.820	.435	.805	
00214/ 2	2.35	1.66	17.50	20.80	12.30	20.45	.690	.820	.485	.805	
00214/ 3	2.35	1.37	17.50	20.80	14.75	20.45	.690	.820	.580	.805	
00214/ 4	1.85	1.66	11.05	20.45	12.30	20.45	.435	.805	.485	.805	
00214/ 5	1.85	1.37	11.05	20.45	14.75	20.45	.435	.805	.580	.805	
00214/ 6	1.37	1.66	14.75	20.45	12.30	20.45	.580	.805	.485	.805	
00214/ 7	2.55	2.35	17.50	22.50	17.50	20.80	.690	.905	.690	.820	
00214/ 8	2.55	1.85	17.50	22.50	11.05	20.45	.690	.905	.435	.805	
00214/ 9	2.55	1.66	17.50	22.50	12.30	20.45	.690	.905	.485	.805	
00214/10	2.55	1.37	17.50	22.50	14.75	20.45	.690	.905	.508	.805	
00214/12	1.37	1.75	14.75	20.45	11.70	20.45	.435	.805	.460	.805	
00214/13	1.75	1.85	11.70	20.45	11.05	20.45	.460	.805	.435	.805	
00214/14	1.37	2.00	14.75	20.45	17.50	17.50	.580	.805	.690	.690	
00214/15	1.75	2.00	11.70	20.45	17.50	17.50	.460	.805	.690	.690	
00214/16	2.35	2.00	17.50	20.80	17.50	17.50	.690	.805	.690	.690	
00214/17	1.66	1.75	12.30	20.45	11.70	20.45	.485	.805	.460	.805	
00214/18	2.35	1.75	17.50	20.80	11.70	20.45	.690	.805	.460	.805	
00214/19	1.66	2.00	12.30	20.45	17.50	17.50	.485	.805	.690	.690	
00214/20 ●	1.85	2.00	11.50	20.45	17.50	17.50	.435	.805	.690	.690	

● - common

Ratio = a / b



V-10, V-4 and older V-8

APERTURE PLATE SPECIFICATIONS

PART NO.	RATIOS		DIMENSIONS mm				DIMENSIONS inches			
			1		2		1		2	
			a	b	a	b	a	b	a	b
00214/21 u	2.35	1.85	14.00	19.50	9.50	19.50	.550	.768	.375	.768
00214/22 u	2.35	1.66	14.00	19.50	10.50	19.50	.550	.768	.415	.768
00214/23 u	2.35	1.37	14.00	19.50	13.20	19.50	.550	.768	.520	.768
00214/24 u	1.85	1.66	9.50	19.50	10.50	19.50	.375	.768	.415	.768
00214/25 u	2.35	1.75	14.00	19.50	10.00	19.50	.550	.768	.394	.768
00214/26 u	1.37	1.66	13.20	19.50	10.50	19.50	.520	.768	.413	.768
00214/81 ● u	2.35	1.85	14.00	19.50	9.50	19.50	.550	.768	.375	.768
00214/82 u	2.35	1.75	14.00	19.50	10.00	19.50	.550	.768	.394	.768
00214/83 u	2.35	1.66	14.00	19.50	10.50	19.50	.550	.768	.413	.768
00214/84 u	2.35	1.37	14.00	19.50	13.20	19.50	.550	.768	.520	.768
00214/85 u	2.00	1.85	17.50	17.50	9.50	19.50	.690	.690	.375	.768
00214/86 u	1.66	2.00	10.50	19.50	17.50	17.50	.413	.768	.690	.690
00214/87 u	1.37	1.75	13.20	19.50	10.00	19.50	.520	.768	.394	.768
00214/88 u	1.75	2.00	10.00	19.50	17.50	17.50	.394	.768	.690	.690
00214/89 u	1.37	1.85	13.20	19.50	9.50	19.50	.520	.768	.375	.768

u - undersized ● - common