

Parent Category: Digital Cinema Player Category: Hotfixes

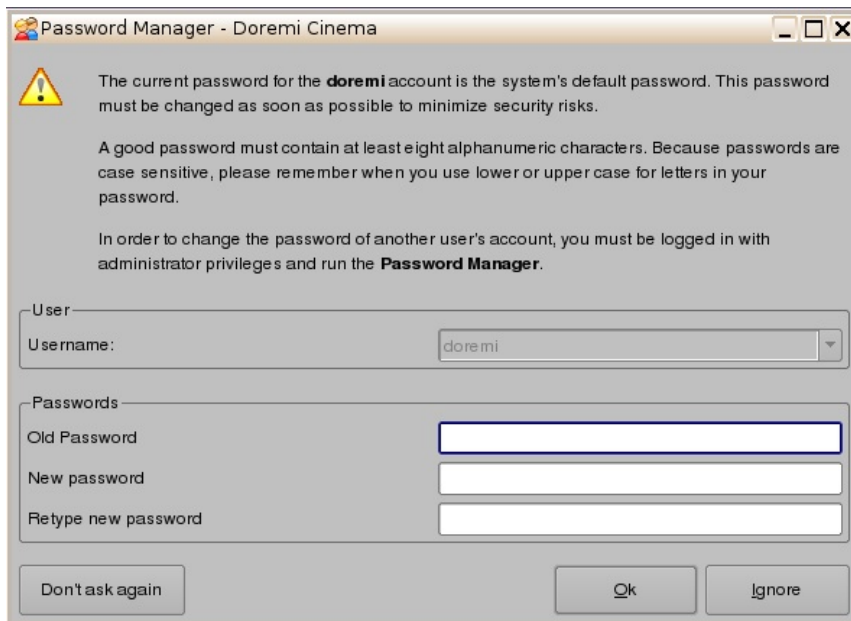
## Password Manager dialogue box at every boot

Created on Thursday, 14 August 2014 15:56

The following describes how to fix the issue of the "**Password Manager**" dialogue box popping up at every boot.

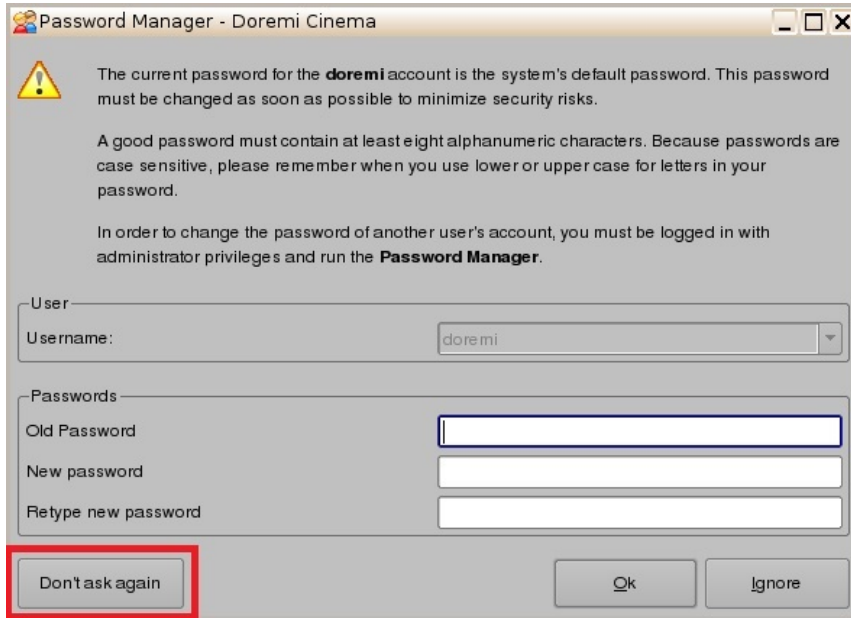
This could occur on the DCP-2000/ShowVault when a backup file is restored from SW 2.2.5 or 2.4.x to 2.6.x.

Please see below an example screen-shot of the "**Password Manager**" dialogue box pop up:

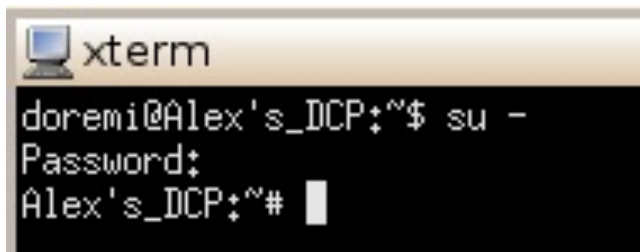
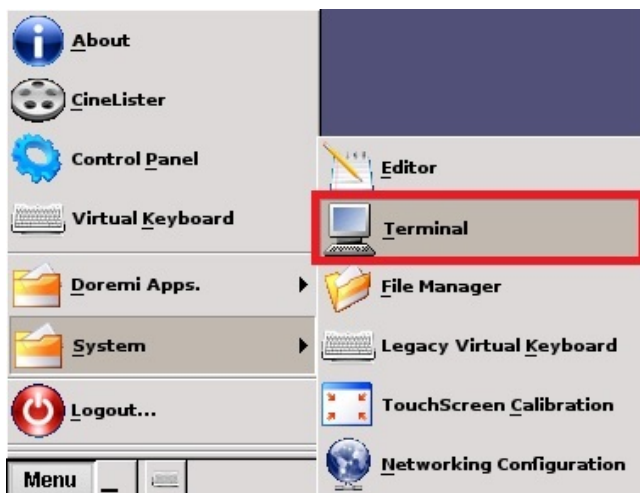


Please follow the steps below to fix this issue:

1. At the end of the server boot process, and the "Password Manager" dialogue box is shown, click on "**Don't ask again**"



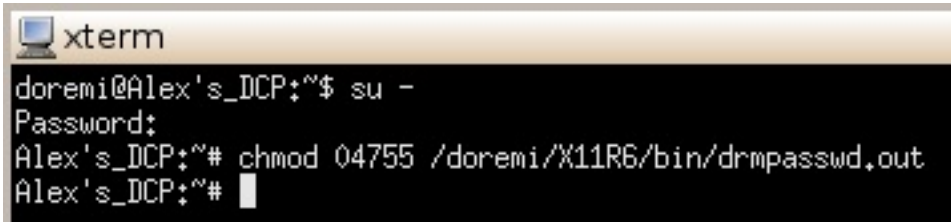
2. Then open a terminal window and login as root (su/root password).



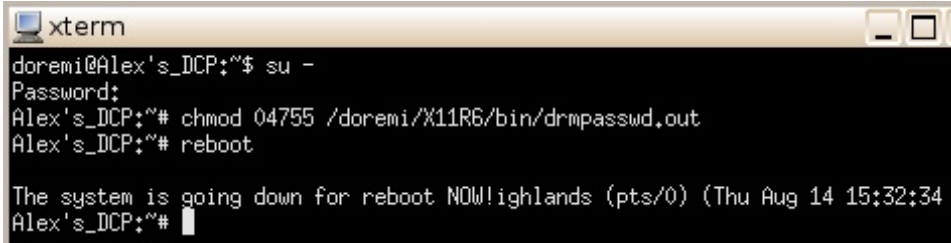
3. The run the following command lines shown below and reboot the server.

```
#> chmod 04755 /doremi/X11R6/bin/drmpasswd.out <enter>
```

```
#> reboot <enter>
```



```
xterm
doremi@Alex's_DCP:~$ su -
Password:
Alex's_DCP:~# chmod 04755 /doremi/X11R6/bin/drmpasswd.out
Alex's_DCP:~#
```



```
xterm
doremi@Alex's_DCP:~$ su -
Password:
Alex's_DCP:~# chmod 04755 /doremi/X11R6/bin/drmpasswd.out
Alex's_DCP:~# reboot

The system is going down for reboot NOW!highlands (pts/0) (Thu Aug 14 15:32:34
Alex's_DCP:~#
```

4. After the server has been rebooted, the "Password Manager" dialogue box should not appear any more.

This issue will be fixed in the next SW release.

*Last Updated on Monday, 15 September 2014 09:28*