

# Film-Tech

The information contained in this Adobe Acrobat pdf file is provided at your own risk and good judgment.

These manuals are designed to facilitate the exchange of information related to cinema projection and film handling, with no warranties nor obligations from the authors, for qualified field service engineers.

If you are not a qualified technician, please make no adjustments to anything you may read about in these Adobe manual downloads.

[www.film-tech.com](http://www.film-tech.com)

OPERATING MANUAL  
MODEL 1000  
INTEGRATED XENON LAMPHOUSE  
AND POWER SUPPLY

OPTICAL RADIATION CORPORATION  
6352 N. IRWINDALE AVENUE  
AZUSA, CALIFORNIA 91702

D113231

REVISED FEBRUARY 1977

1.1 SCOPE

This manual provides installation, operation and maintenance instructions for the Model 1000 ORCON Xenon Light Projection System. The system is manufactured by Optical Radiation Corporation (ORC), Azusa, California, U.S.A. When requesting information, always furnish model and serial numbers.

1.2 GENERAL DESCRIPTION (See Figure 1-1)

The ORCON Model 1000 is designed with the lamphouse and power supply integrated into the same housing. This eliminates the need for hook-up and location of an external power supply. The system is designed for use with 35mm or 16mm motion picture projectors. It operates from 115 VAC single phase power source and draws a maximum input current of 18 amps RMS. The system is equipped with an 8 foot long power cord and a NEMA L5-20, 125 VAC, 20 amp, 3 prong plug. It is designed to operate with both the XL-750W and XL-1000W xenon bulbs. The power supply has DC current regulation in the order of 1% which maintains a current setting independent of line voltage fluctuations. In addition to current regulation, the system is filtered to provide less than 3% RMS current ripple. Lamp current can be continuously adjusted by means of a potentiometer on the rear panel of the lamphouse. Current range is from 17 to 40 amps. Current adjustment is accomplished by controlling the firing angle of a pair of SCR's on the primary side of the power transformer. A current sensing circuit maintains the firing angle of the SCR's constant at the corresponding current setting, providing current regulation.

### 1.3 SPECIFICATIONS

Table 1-1. System Specifications, Model 1000

<u>ITEM</u>	<u>CHARACTERISTIC</u>
Input Current (when operating from 115 VAC:	18 Amps @ 40 Amps DC
Open Circuit Voltage:	120V DC
Weight:	85 Pounds
Dimensions - High:	16½ inches
Wide:	9½ inches
Long:	19½ inches
Current Range:	17 to 40 Amps
Current Ripple:	Less than 3%
Current Regulation:	Less than 1%

### 1.4 OPTICAL SYSTEM

The optical system includes a xenon bulb mounted horizontally in a metal aspheric reflector. The reflector collects the emitted light from the bulb and reflects it to the projector's aperture. A manually operated douser is located inside the lamphouse just behind the front bulkhead (see Figure 1-1).

### 1.5 XENON BULB (XL-750W & XL-1000W)

The xenon bulb is manufactured by Optical Radiation Corporation and is specifically designed for stable operation over a wide current range.

## 1.6 REFLECTOR

The reflector is a complex aspheric surface made of electroformed nickel and coated with aluminum. It is good for the life of the system and does not require replacement in the event of a bulb explosion.

## 1.7 DOUSER

The built-in douser is operated by a handle on the right side of the lamphouse (see Figure 1-1). The douser is provided to close off light to the projector while the xenon bulb is operating. An optional solenoid powered remote control douser is available.

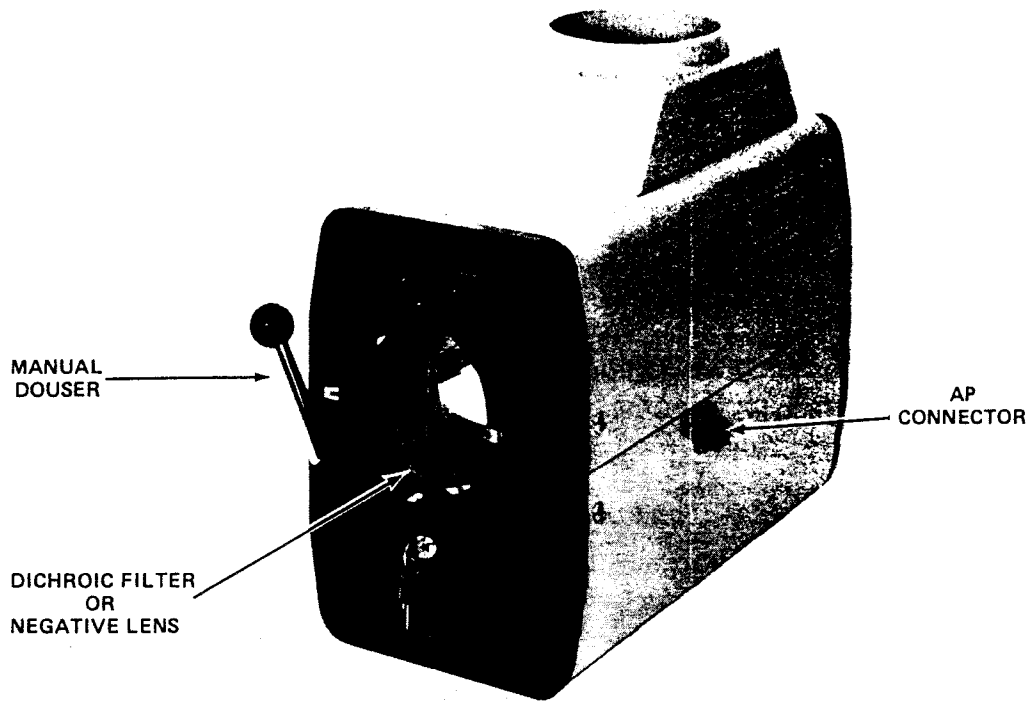
## 1.8 MOUNTING PLATE

For 35 mm projection, it is recommended that the swivel mounting plate be used. This mounting plate attaches to the bottom of the lamphouse and adapts the lamphouse to a nine-inch optical centerline (see Figure 3-1).

## 1.9 LAMPHOUSE CONTROLS AND INTERLOCKS

The lamphouse controls are located on the rear panel (see Figure 1-1) for easy access.

Two circuit breakers on the rear panel provide circuit overload protection. A 0.5 amp breaker protects the igniter circuit and a toggle type 20 amp breaker protects the blowers and power supply. The breakers must be manually reset if an overload occurs. A 1/4 amp fuse is also provided to protect the control circuit in case of an overload. A thermal switch, set at 160°F (70°C) is mounted on the SCR heat sink to protect

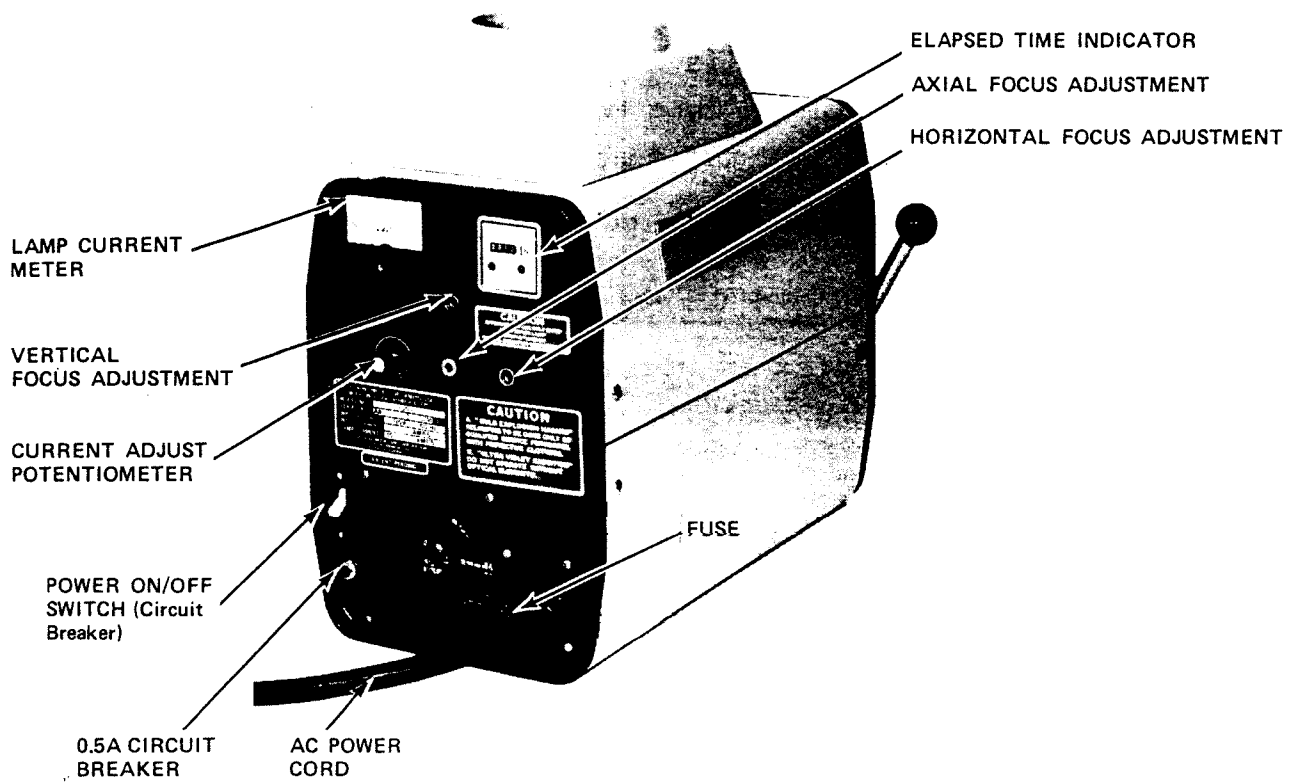


MANUAL  
DOUSER

AP  
CONNECTOR

DICHROIC FILTER  
OR  
NEGATIVE LENS

Front View



ELAPSED TIME INDICATOR

AXIAL FOCUS ADJUSTMENT

HORIZONTAL FOCUS ADJUSTMENT

LAMP CURRENT  
METER

VERTICAL  
FOCUS ADJUSTMENT

CURRENT ADJUST  
POTENTIOMETER

POWER ON/OFF  
SWITCH (Circuit  
Breaker)

0.5A CIRCUIT  
BREAKER

AC POWER  
CORD

FUSE

Rear View

Figure 1-1. Model 1000 Xenon Lamphouse/Power Supply

the SCR's from operating beyond the recommended temperature range. If an excessive temperature rise occurs, the bulb will extinguish and automatically re-ignite when a safe operating temperature is reached. Interlock switches are provided to extinguish the bulb if the top access cover or snout is not properly in place.

The system is equipped with a DC ammeter for accurate lamp current adjustment. An elapsed time indicator is provided so that the number of operational hours on the lamp can be monitored, and the lamp warranty data can be accurately maintained.

#### 1.10 POWER SUPPLY

The power supply consists of three main subassemblies: the transformer/rectifier, the SCR board, and the control board. Plug in circuit boards are used and are accessible for service when the top cover is removed. The transformer/rectifier assembly is located in the lower portion of the lamphouse. The system is modular in design and internal connections are provided so that the unit can be disassembled for maintenance.

#### 1.11 SYSTEM ACCESSORIES

##### 1.11.1 Focus Tool

A 3/16" hex wrench with a plastic handle is used to rotate the three xenon bulb adjustment shafts which position the bulb in the mirror. It is also useful to remove the indexing shoulder bolt on the rear of the mounting plate which allows the lamphouse to swivel for servicing.

#### 1.11.2 Xenon Bulb Installation/Removal Tool (P/N 1145648)

The protective bulb installation/removal tool is a cylindrical transparent plastic device which fits over the bulb. It is constructed to provide a means of installing and removing the xenon bulb without physically handling the quartz surface while providing a protective cover over the bulb to minimize the danger of explosion during installation. The tool is comprised of a tube, two end caps, a retaining clamp, an anode collar and a cathode wing nut retainer.

#### 1.11.3 Hex Wrenches

A 1/8" hex wrench is provided to remove and replace the retaining collar which holds the installation/removal tool captive around the bulb. The collar should be secured in place whenever handling the bulb. A 9/64" hex wrench is provided to secure the anode bulb connection in the lamphouse.

#### 1.11.4 Front Snout Optics

A negative lens is installed in all lamphouses ordered for 35mm projection systems (1000-35). The negative lens adjusts the light output beam for proper alignment to standard 35mm motion picture projectors.

A dichroic filter glass is installed in all lamphouses ordered for 16mm projection systems (1000-16). The dichroic coating reflects infrared light away from the film aperture. The infrared light, if not filtered, could heat damage the film when the output light beam is focused down on 16mm or smaller apertures.





REVISIONS		DATE	APPROVED
1	INITIAL	11/17/68	(Signature)
2	REVISED	11/17/68	(Signature)
3	REVISED	11/17/68	(Signature)
4	REVISED	11/17/68	(Signature)

NO.	DATE	DESCRIPTION
1	11/17/68	INITIAL
2	11/17/68	REVISED
3	11/17/68	REVISED
4	11/17/68	REVISED

DESIGNATION BLOCK	
DES	DESIGNATION NOT USED
C	CAPACITOR
CR	CR109
Q	Q107
R	R136
T	T101

2. FOR MODEL 1000 SCHEMATIC, SEE NO. 1140851.  
 1. ALL RESISTORS 1/4 W, 5% UNLESS OTHERWISE NOTED.

NOTES:  
 UNLESS OTHERWISE SPECIFIED:  
 DIMENSIONS ARE IN INCHES  
 TOLERANCES ARE:  
 XX = ± 0.005  
 XXX = ± 0.003  
 MACHINING FINISH  
 DO NOT SCALE DRAWING

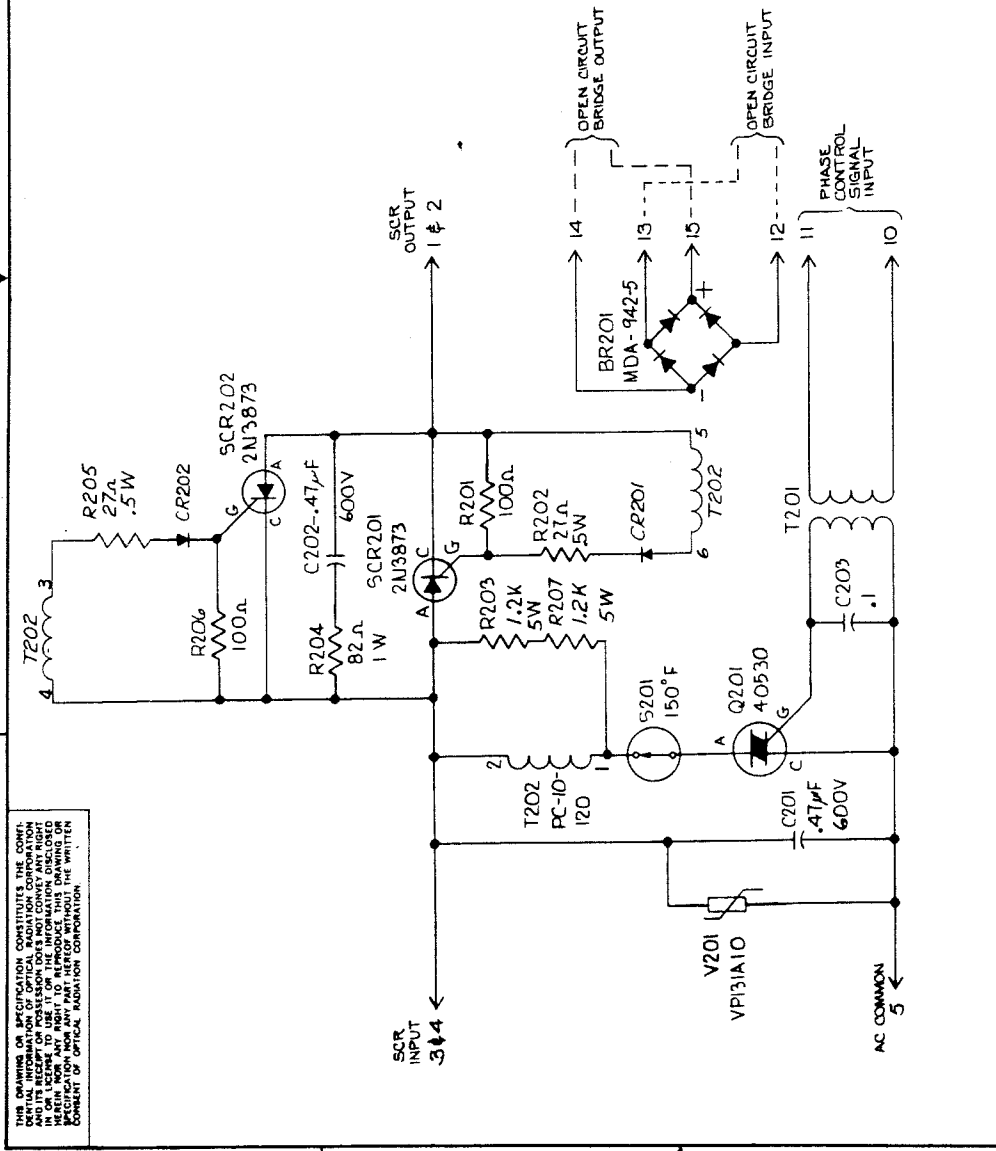
QTY.	SYMBOL	DESCRIPTION	REF. DES.	QTY.	SYMBOL	DESCRIPTION	REF. DES.
1	Q107	2N3906	Q107	1	Q107	2N3906	Q107
1	Q109	MPS 5172	Q109	1	Q109	MPS 5172	Q109
1	Q125	75L	Q125	1	Q125	75L	Q125
1	Q126	12K	Q126	1	Q126	12K	Q126
1	Q127	47K	Q127	1	Q127	47K	Q127
1	Q128	100K	Q128	1	Q128	100K	Q128
1	Q129	100K	Q129	1	Q129	100K	Q129
1	Q130	22K	Q130	1	Q130	22K	Q130
1	Q131	10K	Q131	1	Q131	10K	Q131
1	Q132	22K	Q132	1	Q132	22K	Q132
1	Q133	100K	Q133	1	Q133	100K	Q133
1	Q134	47K	Q134	1	Q134	47K	Q134
1	Q135	5K	Q135	1	Q135	5K	Q135
1	Q136	100K	Q136	1	Q136	100K	Q136
1	Q137	100K	Q137	1	Q137	100K	Q137
1	Q138	100K	Q138	1	Q138	100K	Q138
1	Q139	100K	Q139	1	Q139	100K	Q139
1	Q140	100K	Q140	1	Q140	100K	Q140
1	Q141	100K	Q141	1	Q141	100K	Q141
1	Q142	100K	Q142	1	Q142	100K	Q142
1	Q143	100K	Q143	1	Q143	100K	Q143
1	Q144	100K	Q144	1	Q144	100K	Q144
1	Q145	100K	Q145	1	Q145	100K	Q145
1	Q146	100K	Q146	1	Q146	100K	Q146
1	Q147	100K	Q147	1	Q147	100K	Q147
1	Q148	100K	Q148	1	Q148	100K	Q148
1	Q149	100K	Q149	1	Q149	100K	Q149
1	Q150	100K	Q150	1	Q150	100K	Q150
1	Q151	100K	Q151	1	Q151	100K	Q151
1	Q152	100K	Q152	1	Q152	100K	Q152
1	Q153	100K	Q153	1	Q153	100K	Q153
1	Q154	100K	Q154	1	Q154	100K	Q154
1	Q155	100K	Q155	1	Q155	100K	Q155
1	Q156	100K	Q156	1	Q156	100K	Q156
1	Q157	100K	Q157	1	Q157	100K	Q157
1	Q158	100K	Q158	1	Q158	100K	Q158
1	Q159	100K	Q159	1	Q159	100K	Q159
1	Q160	100K	Q160	1	Q160	100K	Q160
1	Q161	100K	Q161	1	Q161	100K	Q161
1	Q162	100K	Q162	1	Q162	100K	Q162
1	Q163	100K	Q163	1	Q163	100K	Q163
1	Q164	100K	Q164	1	Q164	100K	Q164
1	Q165	100K	Q165	1	Q165	100K	Q165
1	Q166	100K	Q166	1	Q166	100K	Q166
1	Q167	100K	Q167	1	Q167	100K	Q167
1	Q168	100K	Q168	1	Q168	100K	Q168
1	Q169	100K	Q169	1	Q169	100K	Q169
1	Q170	100K	Q170	1	Q170	100K	Q170
1	Q171	100K	Q171	1	Q171	100K	Q171
1	Q172	100K	Q172	1	Q172	100K	Q172
1	Q173	100K	Q173	1	Q173	100K	Q173
1	Q174	100K	Q174	1	Q174	100K	Q174
1	Q175	100K	Q175	1	Q175	100K	Q175
1	Q176	100K	Q176	1	Q176	100K	Q176
1	Q177	100K	Q177	1	Q177	100K	Q177
1	Q178	100K	Q178	1	Q178	100K	Q178
1	Q179	100K	Q179	1	Q179	100K	Q179
1	Q180	100K	Q180	1	Q180	100K	Q180
1	Q181	100K	Q181	1	Q181	100K	Q181
1	Q182	100K	Q182	1	Q182	100K	Q182
1	Q183	100K	Q183	1	Q183	100K	Q183
1	Q184	100K	Q184	1	Q184	100K	Q184
1	Q185	100K	Q185	1	Q185	100K	Q185
1	Q186	100K	Q186	1	Q186	100K	Q186
1	Q187	100K	Q187	1	Q187	100K	Q187
1	Q188	100K	Q188	1	Q188	100K	Q188
1	Q189	100K	Q189	1	Q189	100K	Q189
1	Q190	100K	Q190	1	Q190	100K	Q190
1	Q191	100K	Q191	1	Q191	100K	Q191
1	Q192	100K	Q192	1	Q192	100K	Q192
1	Q193	100K	Q193	1	Q193	100K	Q193
1	Q194	100K	Q194	1	Q194	100K	Q194
1	Q195	100K	Q195	1	Q195	100K	Q195
1	Q196	100K	Q196	1	Q196	100K	Q196
1	Q197	100K	Q197	1	Q197	100K	Q197
1	Q198	100K	Q198	1	Q198	100K	Q198
1	Q199	100K	Q199	1	Q199	100K	Q199
1	Q200	100K	Q200	1	Q200	100K	Q200

UNLESS OTHERWISE SPECIFIED:  
 DIMENSIONS ARE IN INCHES  
 TOLERANCES ARE:  
 XX = ± 0.005  
 XXX = ± 0.003  
 MACHINING FINISH  
 DO NOT SCALE DRAWING

QTY.	SYMBOL	DESCRIPTION	REF. DES.	QTY.	SYMBOL	DESCRIPTION	REF. DES.
1	Q107	2N3906	Q107	1	Q107	2N3906	Q107
1	Q109	MPS 5172	Q109	1	Q109	MPS 5172	Q109
1	Q125	75L	Q125	1	Q125	75L	Q125
1	Q126	12K	Q126	1	Q126	12K	Q126
1	Q127	47K	Q127	1	Q127	47K	Q127
1	Q128	100K	Q128	1	Q128	100K	Q128
1	Q129	100K	Q129	1	Q129	100K	Q129
1	Q130	22K	Q130	1	Q130	22K	Q130
1	Q131	10K	Q131	1	Q131	10K	Q131
1	Q132	22K	Q132	1	Q132	22K	Q132
1	Q133	100K	Q133	1	Q133	100K	Q133
1	Q134	47K	Q134	1	Q134	47K	Q134
1	Q135	5K	Q135	1	Q135	5K	Q135
1	Q136	100K	Q136	1	Q136	100K	Q136
1	Q137	100K	Q137	1	Q137	100K	Q137
1	Q138	100K	Q138	1	Q138	100K	Q138
1	Q139	100K	Q139	1	Q139	100K	Q139
1	Q140	100K	Q140	1	Q140	100K	Q140
1	Q141	100K	Q141	1	Q141	100K	Q141
1	Q142	100K	Q142	1	Q142	100K	Q142
1	Q143	100K	Q143	1	Q143	100K	Q143
1	Q144	100K	Q144	1	Q144	100K	Q144
1	Q145	100K	Q145	1	Q145	100K	Q145
1	Q146	100K	Q146	1	Q146	100K	Q146
1	Q147	100K	Q147	1	Q147	100K	Q147
1	Q148	100K	Q148	1	Q148	100K	Q148
1	Q149	100K	Q149	1	Q149	100K	Q149
1	Q150	100K	Q150	1	Q150	100K	Q150
1	Q151	100K	Q151	1	Q151	100K	Q151
1	Q152	100K	Q152	1	Q152	100K	Q152
1	Q153	100K	Q153	1	Q153	100K	Q153
1	Q154	100K	Q154	1	Q154	100K	Q154
1	Q155	100K	Q155	1	Q155	100K	Q155
1	Q156	100K	Q156	1	Q156	100K	Q156
1	Q157	100K	Q157	1	Q157	100K	Q157
1	Q158	100K	Q158	1	Q158	100K	Q158
1	Q159	100K	Q159	1	Q159	100K	Q159
1	Q160	100K	Q160	1	Q160	100K	Q160
1	Q161	100K	Q161	1	Q161	100K	Q161
1	Q162	100K	Q162	1	Q162	100K	Q162
1	Q163	100K	Q163	1	Q163	100K	Q163
1	Q164	100K	Q164	1	Q164	100K	Q164
1	Q165	100K	Q165	1	Q165	100K	Q165
1	Q166	100K	Q166	1	Q166	100K	Q166
1	Q167	100K	Q167	1	Q167	100K	Q167
1	Q168	100K	Q168	1	Q168	100K	Q168
1	Q169	100K	Q169	1	Q169	100K	Q169
1	Q170	100K	Q170	1	Q170	100K	Q170
1	Q171	100K	Q171	1	Q171	100K	Q171
1	Q172	100K	Q172	1	Q172	100K	Q172
1	Q173	100K	Q173	1	Q173	100K	Q173
1	Q174	100K	Q174	1	Q174	100K	Q174
1	Q175	100K	Q175	1	Q175	100K	Q175
1	Q176	100K	Q176	1	Q176	100K	Q176
1	Q177	100K	Q177	1	Q177	100K	Q177
1	Q178	100K	Q178	1	Q178	100K	Q178
1	Q179	100K	Q179	1	Q179	100K	Q179
1	Q180	100K	Q180	1	Q180	100K	Q180
1	Q181	100K	Q181	1	Q181	100K	Q181
1	Q182	100K	Q182	1	Q		

THIS DRAWING OR SPECIFICATION CONSTITUTES THE CONFIDENTIAL INFORMATION OF OPTICAL RADIATION CORPORATION AND IS NOT TO BE REPRODUCED, COPIED, OR DISCLOSED IN ANY MANNER WITHOUT THE WRITTEN CONSENT OF OPTICAL RADIATION CORPORATION.

ZONE	LTR	DESCRIPTION	DATE	APPROVED
A		ADD CR101, J02 - REMOVED C204 ADD R207 REF. E.O. #00538	2/23/73	<i>J. Hunt</i>
B		ZONE 2/B, P111 M NASK EDR #181	8-19-73	
C		SEE E.O. #02010	9-22-76	<i>WBC</i>



QTY	REQD	SYM.	NOMENCLATURE OR DESCRIPTION	REF CODE IDENT	PART OR IDENTIFYING NO.	SPECIFICATION	MATERIAL OR NOTE	ZONE	ITEM NO.
			DR5CARBO	B-15-72					
LIST OF MATERIAL									
UNLESS OTHERWISE SPECIFIED DIMENSIONS ARE IN INCHES DECIMALS TOLERANCES ANGLES DESIGN JOG ±.05 20X ±.010 ± 1/2° MACHINE FINISH DO NOT SCALE DRAWING MATERIAL:									
DRAWN: DR5CARBO B-15-72									
CHECK: <i>J. Hunt</i>									
ENGR: <i>J. Hunt</i>									
APPR: <i>J. Hunt</i>									
APPR: <i>J. Hunt</i>									
CONTRACT NO. PD-506-10									
FINISH: <i>J-11-72</i>									
APPROVED: <i>J. Hunt</i>									
APPROVED: _____									

DASH NO.	HEAT ASSY	USED ON	APPLICATION
-1	114251B	PD 506-10	

1. FOR MODEL 1000 SCHEMATIC SEE NO. 114055T.  
NOTES:



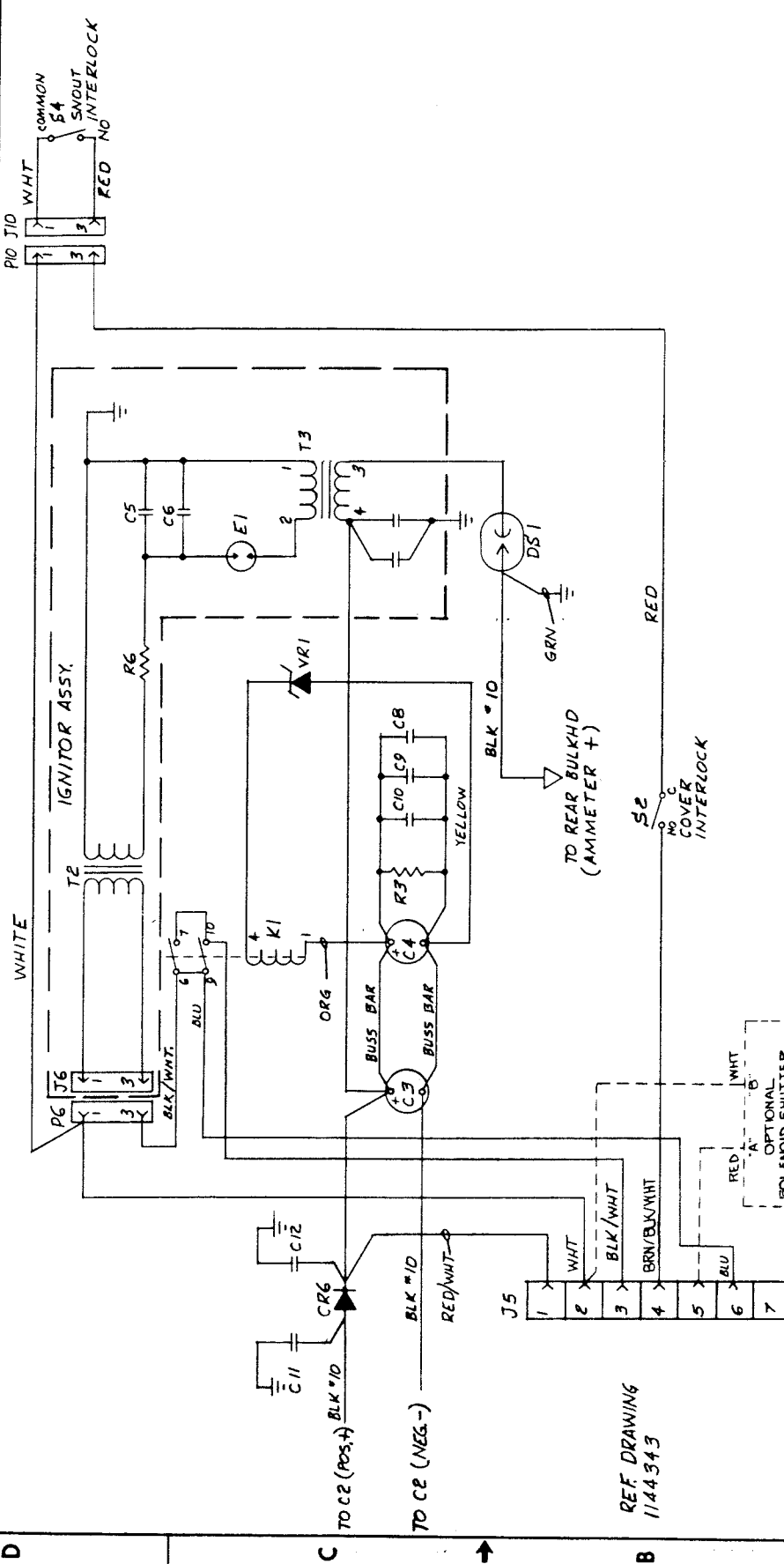
SCHEMATIC, SCR BOARD

SIZE CODE IDENT NO.	C 33030	1132519
SCALE	WEIGHT	SHEET OF



THIS DRAWING OR SPECIFICATION CONSTITUTES THE COMPLETE INFORMATION OF OPTICAL RADIATION CORPORATION IN CONNECTION WITH THE INFORMATION DISCLOSED HEREIN. NO PART OF THIS INFORMATION IS TO BE REPRODUCED OR TRANSMITTED IN ANY FORM OR BY ANY MEANS WITHOUT THE WRITTEN CONSENT OF OPTICAL RADIATION CORPORATION.

REVISIONS		DATE	APPROVED
A	EO 1466	3-19-75	[Signature]
B	EO 1623	10-9-75	[Signature]
C	EO 2063	11-3-76	[Signature]



QTY	REQD	SYM	MONUMENTATION OR DESCRIPTION	REF DES	CODE IDENT	PART OR IDENTIFYING NO.	SPECIFICATION	MATERIAL OR NOTE	ZONE	ITEM NO.

LIST OF MATERIAL		DATE	APPROVED
1	WHT	5-30-74	[Signature]
2	BLK/WHT	6-20-74	[Signature]
3	RED	6-20-74	[Signature]
4	BRN/BLK/WHT	6-20-74	[Signature]

4. EFFECTIVITY: M1000 S/NA00786 & UP. OPTIONAL CIRCUITS NOT SHOWN.  
 3. REF. SCHEMATIC 1140957.  
 2. ALL WIRES #20 AWG UNLESS OTHERWISE SPECIFIED.  
 1. FEMALE MOLEX CONNECTORS ARE DESIGNATED "J".  
 MALE MOLEX CONNECTORS ARE DESIGNATED "P".

NOTES:

QTY	DASH NO.	NEXT ASSY	APPLICATION
1	-	PP506-10	USED ON

Optical Radiation Corporation  
 WIRING DIAGRAM  
 CENTER BULKHEAD

SIZE	CODE IDENT NO.	SCALE	WEIGHT	SHEET	OF
C	33030	1134342		1	1

REV	DESCRIPTION	DATE	BY	CHKD
A	REVISED	10/27/52	JM	JM
B	FOR NO. 652	10/27/52	JM	JM
C	FOR NO. 652	10/27/52	JM	JM
D	FOR NO. 652	10/27/52	JM	JM

REV	DESCRIPTION	DATE	BY	CHKD
A	REVISED	10/27/52	JM	JM
B	FOR NO. 652	10/27/52	JM	JM
C	FOR NO. 652	10/27/52	JM	JM
D	FOR NO. 652	10/27/52	JM	JM

REV	DESCRIPTION	DATE	BY	CHKD
A	REVISED	10/27/52	JM	JM
B	FOR NO. 652	10/27/52	JM	JM
C	FOR NO. 652	10/27/52	JM	JM
D	FOR NO. 652	10/27/52	JM	JM

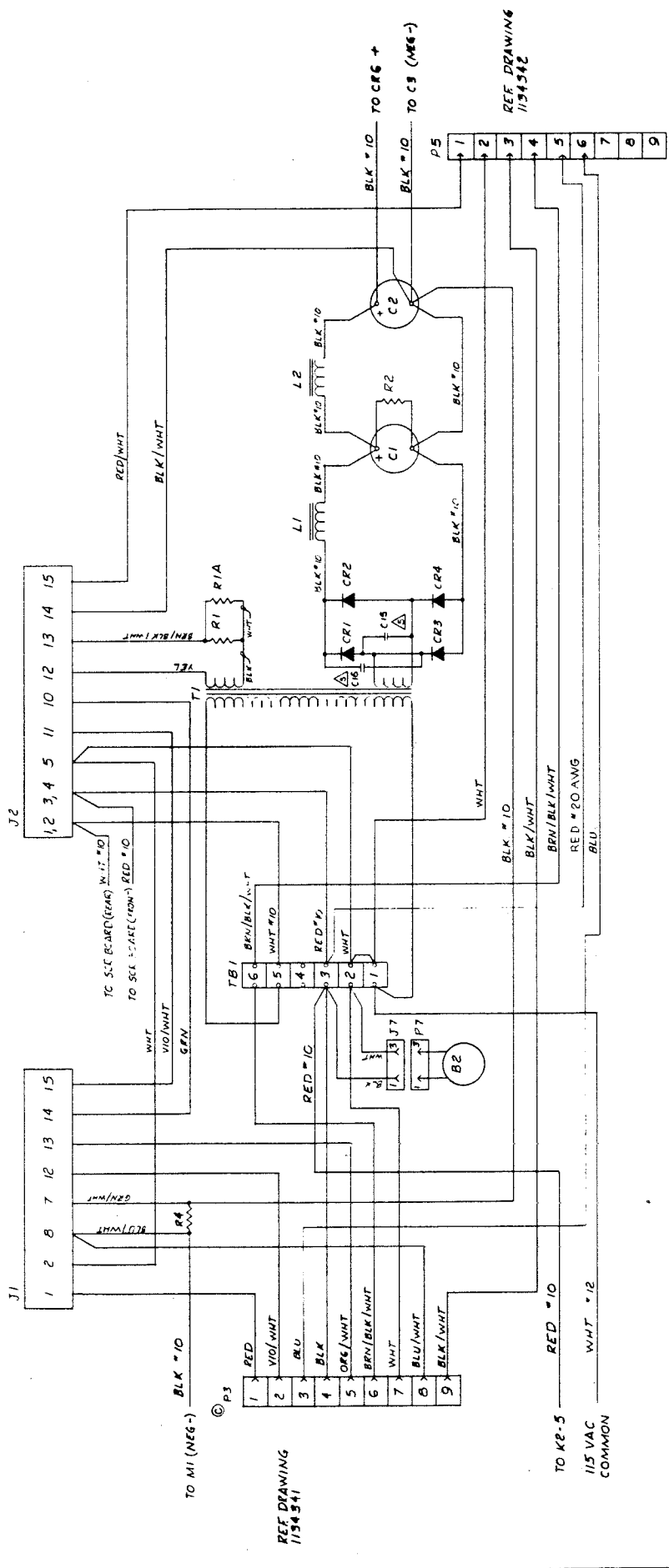
REV	DESCRIPTION	DATE	BY	CHKD
A	REVISED	10/27/52	JM	JM
B	FOR NO. 652	10/27/52	JM	JM
C	FOR NO. 652	10/27/52	JM	JM
D	FOR NO. 652	10/27/52	JM	JM

REV	DESCRIPTION	DATE	BY	CHKD
A	REVISED	10/27/52	JM	JM
B	FOR NO. 652	10/27/52	JM	JM
C	FOR NO. 652	10/27/52	JM	JM
D	FOR NO. 652	10/27/52	JM	JM

REV	DESCRIPTION	DATE	BY	CHKD
A	REVISED	10/27/52	JM	JM
B	FOR NO. 652	10/27/52	JM	JM
C	FOR NO. 652	10/27/52	JM	JM
D	FOR NO. 652	10/27/52	JM	JM

REV	DESCRIPTION	DATE	BY	CHKD
A	REVISED	10/27/52	JM	JM
B	FOR NO. 652	10/27/52	JM	JM
C	FOR NO. 652	10/27/52	JM	JM
D	FOR NO. 652	10/27/52	JM	JM

REV	DESCRIPTION	DATE	BY	CHKD
A	REVISED	10/27/52	JM	JM
B	FOR NO. 652	10/27/52	JM	JM
C	FOR NO. 652	10/27/52	JM	JM
D	FOR NO. 652	10/27/52	JM	JM



SYMBOL	DESCRIPTION	QTY	UNIT	LIST OF MATERIAL
...	...	...	...	...

NO.	DESCRIPTION	QTY	UNIT
...	...	...	...

NO.	DESCRIPTION	QTY	UNIT
...	...	...	...

NO.	DESCRIPTION	QTY	UNIT
...	...	...	...

NO.	DESCRIPTION	QTY	UNIT
...	...	...	...

NO.	DESCRIPTION	QTY	UNIT
...	...	...	...

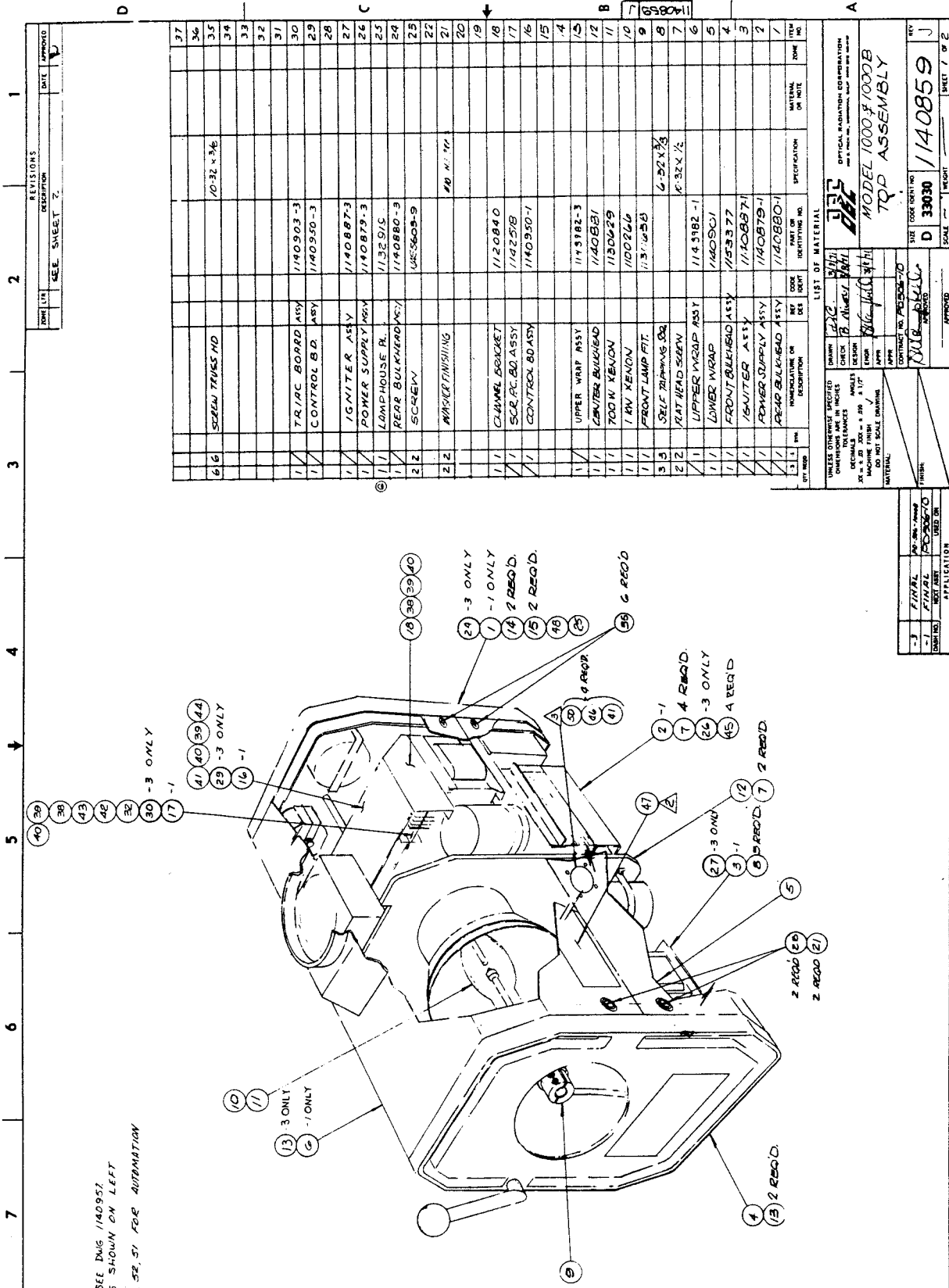
NO.	DESCRIPTION	QTY	UNIT
...	...	...	...

A M1000B ONLY C15, C16 (47.5-44.200-600V)  
 4 EFFECTIVITY: M1000 SIN A800786 & UP OPTIONAL CIRCUITS NOT SHOWN  
 3 REF SCHEMATIC - 1140957 (M1000)-1142018 (M1000B)  
 2. ALL WIRES #20 AWG UNLESS OTHERWISE SPECIFIED.  
 1. FEMALE MOLEX CONNECTORS ARE DESIGNATED "J"  
 MALE MOLEX CONNECTORS ARE DESIGNATED "P".

NOTES

THE DRAWING IS AN APPROXIMATE REPRESENTATION OF THE DESIGN AND IS NOT TO BE USED FOR FABRICATION OR CONSTRUCTION OF THE PARTS OR ASSEMBLY UNLESS SPECIFICALLY NOTED OTHERWISE. THE DRAWING IS THE PROPERTY OF THE COMPANY AND IS NOT TO BE REPRODUCED OR COPIED IN ANY MANNER WITHOUT THE WRITTEN PERMISSION OF THE COMPANY.

NOTES:  
 FOR SCHEMATIC SEE Dwg 1140957.  
 PLACE APPROX. AS SHOWN ON LEFT  
 AND BOTH SIDES  
 USE TERMS SW 53, SZ, S1 FOR AUTOMATION



REV	NO	DESCRIPTION	DATE	APPROVED
1	1	TR/PC BOARD ASSY	1140903-3	
1	1	CONTROL BOARD ASSY	1140950-3	
1	1	IGNITER ASSY	1140887-3	
1	1	POWER SUPPLY ASSY	1140879-3	
1	1	LAMP HOUSE RL	113591C	
1	1	REAR BULKHEAD ASSY	1140880-3	
2	2	SCREW	UNF-5608-9	
2	2	WASHER FINISHING		
1	1	CLAMP BRACKET	1120840	
1	1	SCR PC BOARD ASSY	114225B	
1	1	CONTROL BOARD ASSY	1140950-1	
1	1	UPPER WRAP ASSY	1145182-3	
1	1	IGNITER BULKHEAD	1140881	
1	1	700 W XENON	1130629	
1	1	1 RV XENON	1100266	
3	3	SELF TAPPING SCREW	11311250	
2	2	FLAT HEAD SCREW	1145182-1	
1	1	UPPER WRAP	1140880-1	
1	1	FRONT BULKHEAD ASSY	1145377	
1	1	POWER SUPPLY ASSY	1140887-1	
1	1	REAR BULKHEAD ASSY	1140880-1	

LIST OF MATERIAL

UNLESS OTHERWISE SPECIFIED DIMENSIONS ARE IN INCHES

DECIMALS FRACTIONS

1/2 3/4 1 1 1/2 2 3 4 5 6 7 8 9 10 11 12 13 14 15 16 17 18 19 20 21 22 23 24 25 26 27 28 29 30 31 32 33 34 35 36 37 38 39 40 41 42 43 44 45 46 47 48 49 50 51 52 53 54 55

SCALE: 1" = 1" (ASSEMBLY)

DATE: 11/13/77

BY: [Signature]

CHECKED: [Signature]

APPROVED: [Signature]

PROJECT: OPTICAL RADIATION CORPORATION

MODEL: 1000 F1000B

TOP ASSEMBLY

SIZE: 1000 F1000B

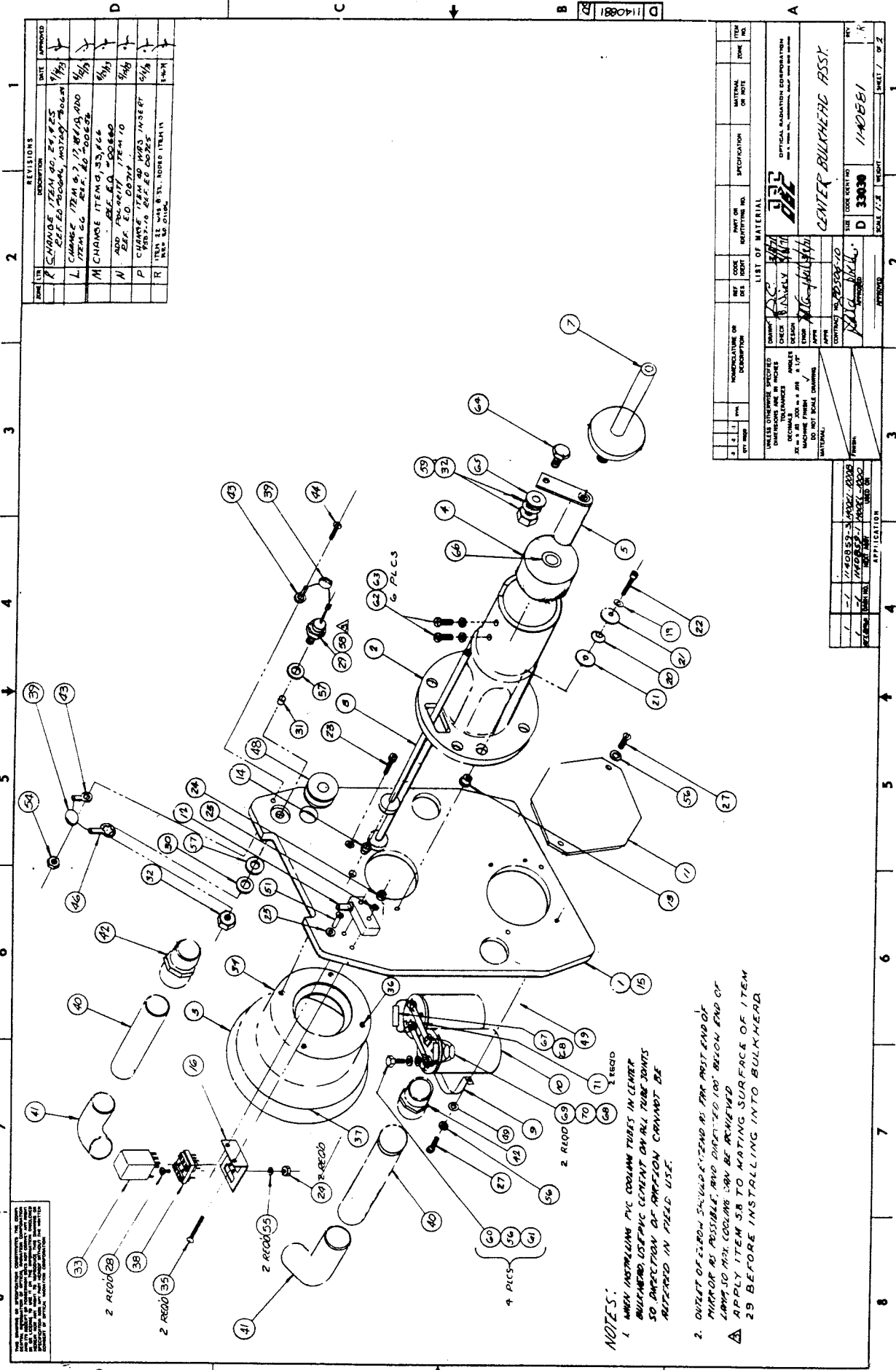
DWG NO: 1140859

REV: J

SHEET 1 OF 2







DATE	REV	DESCRIPTION	APPROVED
9/1/72	P	CHANGE ITEM NO. 24, 25 REF. TO FIG. 1, INST. 806A	[Signature]
4/1/73	L	CHANGE ITEM 9, 17, 18, 19, 20 ITEM 20 REF. TO 200528	[Signature]
4/1/73	M	CHANGE ITEM 9, 33, 44 REF. TO 200528	[Signature]
4/1/73	N	ADD PURCHASING ITEM 10 REF. TO 200528	[Signature]
4/1/73	P	CHANGE ITEM 10 REF. TO 200528	[Signature]
4/1/73	R	ITEM 33 WAS B. 33. INSTEAD ITEM 11 REF. TO 200528	[Signature]

REV	DATE	DESCRIPTION	APPROVED
1	11/4/68	ISSUED FOR PRODUCTION	[Signature]
2	11/4/68	ISSUED FOR PRODUCTION	[Signature]
3	11/4/68	ISSUED FOR PRODUCTION	[Signature]
4	11/4/68	ISSUED FOR PRODUCTION	[Signature]
5	11/4/68	ISSUED FOR PRODUCTION	[Signature]
6	11/4/68	ISSUED FOR PRODUCTION	[Signature]
7	11/4/68	ISSUED FOR PRODUCTION	[Signature]
8	11/4/68	ISSUED FOR PRODUCTION	[Signature]

REV	DATE	DESCRIPTION	APPROVED
1	11/4/68	ISSUED FOR PRODUCTION	[Signature]
2	11/4/68	ISSUED FOR PRODUCTION	[Signature]
3	11/4/68	ISSUED FOR PRODUCTION	[Signature]
4	11/4/68	ISSUED FOR PRODUCTION	[Signature]
5	11/4/68	ISSUED FOR PRODUCTION	[Signature]
6	11/4/68	ISSUED FOR PRODUCTION	[Signature]
7	11/4/68	ISSUED FOR PRODUCTION	[Signature]
8	11/4/68	ISSUED FOR PRODUCTION	[Signature]

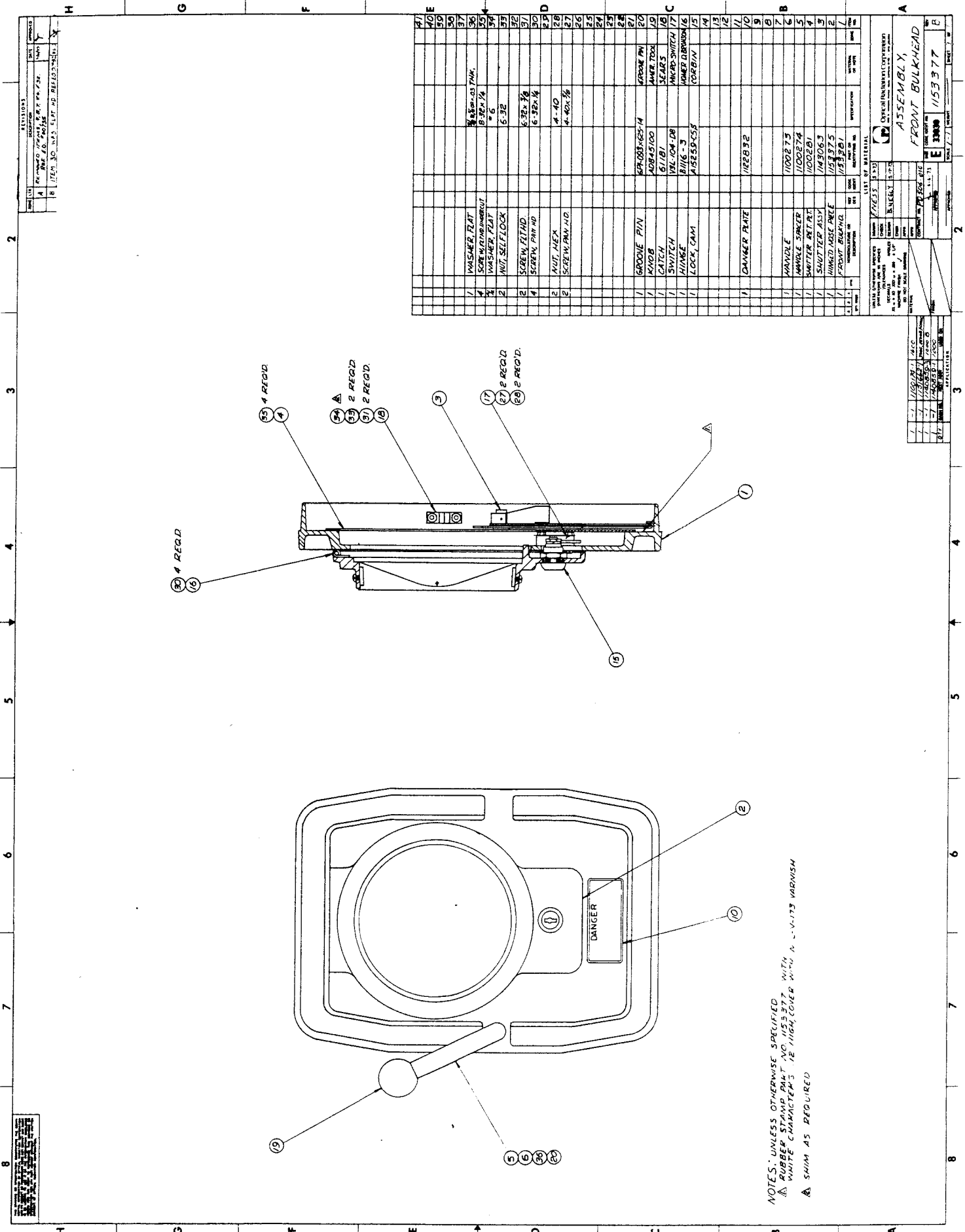
**NOTES:**

- WHEN INSTALLING PVC COOLING TUBES IN CENTER BULKHEAD, USE PVC CEMENT ON ALL TUBE JOINTS SO DIRECTION OF FLOW CAN BE ASCERTAINED IN FIELD USE.
- OUTLET OF 29 FROM 54 SHOULD BE TAPED BY THE FIRST END OF TUBE FOR AS POSSIBLE AND MARKED "100" BELOW END OF TUBE. SO MAX. COOLING CAN BE ACHIEVED.

▲ APPLY ITEM 38 TO MATING SURFACE OF ITEM 29 BEFORE INSTALLING INTO BULKHEAD.

REV	DATE	DESCRIPTION	APPROVED
1	11/4/68	ISSUED FOR PRODUCTION	[Signature]
2	11/4/68	ISSUED FOR PRODUCTION	[Signature]
3	11/4/68	ISSUED FOR PRODUCTION	[Signature]
4	11/4/68	ISSUED FOR PRODUCTION	[Signature]
5	11/4/68	ISSUED FOR PRODUCTION	[Signature]
6	11/4/68	ISSUED FOR PRODUCTION	[Signature]
7	11/4/68	ISSUED FOR PRODUCTION	[Signature]
8	11/4/68	ISSUED FOR PRODUCTION	[Signature]

REV	DATE	DESCRIPTION	APPROVED
1	11/4/68	ISSUED FOR PRODUCTION	[Signature]
2	11/4/68	ISSUED FOR PRODUCTION	[Signature]
3	11/4/68	ISSUED FOR PRODUCTION	[Signature]
4	11/4/68	ISSUED FOR PRODUCTION	[Signature]
5	11/4/68	ISSUED FOR PRODUCTION	[Signature]
6	11/4/68	ISSUED FOR PRODUCTION	[Signature]
7	11/4/68	ISSUED FOR PRODUCTION	[Signature]
8	11/4/68	ISSUED FOR PRODUCTION	[Signature]



NOTES: UNLESS OTHERWISE SPECIFIED  
 ▲ RUBBER STAMP PART NO. 1153377 WITH  
 WHITE CHARACTER'S 12 HIGH, COVER WITH A .0015 VARNISH  
 A. SHIM AS REQUIRED

QTY	DESCRIPTION	UNIT	REF. DES.
1	WASHER FLAT		
4	SCREW 1/4x1/2		
4	WASHER FLAT		
2	NUT SELF LOCK		
2	SCREW 1/4x1/2		
4	SCREW PAN HD		
2	NUT HEX		
2	SCREW PAN HD		
1	GROOVE PIN		
1	KEY		
1	CATCH		
1	SWITCH		
1	HINGE		
1	LOCK CAM		
1	DANGER PLATE		
1	HANDLE		
1	HANDLE SPRINGER		
1	SWITCH RET. PIN		
1	SHUTTER ASY		
1	MINI-MODE ASY		
1	FRONT BULKHEAD		

QTY	DESCRIPTION	UNIT	REF. DES.
1	WASHER FLAT		
4	SCREW 1/4x1/2		
4	WASHER FLAT		
2	NUT SELF LOCK		
2	SCREW 1/4x1/2		
4	SCREW PAN HD		
2	NUT HEX		
2	SCREW PAN HD		
1	GROOVE PIN		
1	KEY		
1	CATCH		
1	SWITCH		
1	HINGE		
1	LOCK CAM		
1	DANGER PLATE		
1	HANDLE		
1	HANDLE SPRINGER		
1	SWITCH RET. PIN		
1	SHUTTER ASY		
1	MINI-MODE ASY		
1	FRONT BULKHEAD		

QTY	DESCRIPTION	UNIT	REF. DES.
1	WASHER FLAT		
4	SCREW 1/4x1/2		
4	WASHER FLAT		
2	NUT SELF LOCK		
2	SCREW 1/4x1/2		
4	SCREW PAN HD		
2	NUT HEX		
2	SCREW PAN HD		
1	GROOVE PIN		
1	KEY		
1	CATCH		
1	SWITCH		
1	HINGE		
1	LOCK CAM		
1	DANGER PLATE		
1	HANDLE		
1	HANDLE SPRINGER		
1	SWITCH RET. PIN		
1	SHUTTER ASY		
1	MINI-MODE ASY		
1	FRONT BULKHEAD		

QTY	DESCRIPTION	UNIT	REF. DES.
1	WASHER FLAT		
4	SCREW 1/4x1/2		
4	WASHER FLAT		
2	NUT SELF LOCK		
2	SCREW 1/4x1/2		
4	SCREW PAN HD		
2	NUT HEX		
2	SCREW PAN HD		
1	GROOVE PIN		
1	KEY		
1	CATCH		
1	SWITCH		
1	HINGE		
1	LOCK CAM		
1	DANGER PLATE		
1	HANDLE		
1	HANDLE SPRINGER		
1	SWITCH RET. PIN		
1	SHUTTER ASY		
1	MINI-MODE ASY		
1	FRONT BULKHEAD		

QTY	DESCRIPTION	UNIT	REF. DES.
1	WASHER FLAT		
4	SCREW 1/4x1/2		
4	WASHER FLAT		
2	NUT SELF LOCK		
2	SCREW 1/4x1/2		
4	SCREW PAN HD		
2	NUT HEX		
2	SCREW PAN HD		
1	GROOVE PIN		
1	KEY		
1	CATCH		
1	SWITCH		
1	HINGE		
1	LOCK CAM		
1	DANGER PLATE		
1	HANDLE		
1	HANDLE SPRINGER		
1	SWITCH RET. PIN		
1	SHUTTER ASY		
1	MINI-MODE ASY		
1	FRONT BULKHEAD		

QTY	DESCRIPTION	UNIT	REF. DES.
1	WASHER FLAT		
4	SCREW 1/4x1/2		
4	WASHER FLAT		
2	NUT SELF LOCK		
2	SCREW 1/4x1/2		
4	SCREW PAN HD		
2	NUT HEX		
2	SCREW PAN HD		
1	GROOVE PIN		
1	KEY		
1	CATCH		
1	SWITCH		
1	HINGE		
1	LOCK CAM		
1	DANGER PLATE		
1	HANDLE		
1	HANDLE SPRINGER		
1	SWITCH RET. PIN		
1	SHUTTER ASY		
1	MINI-MODE ASY		
1	FRONT BULKHEAD		

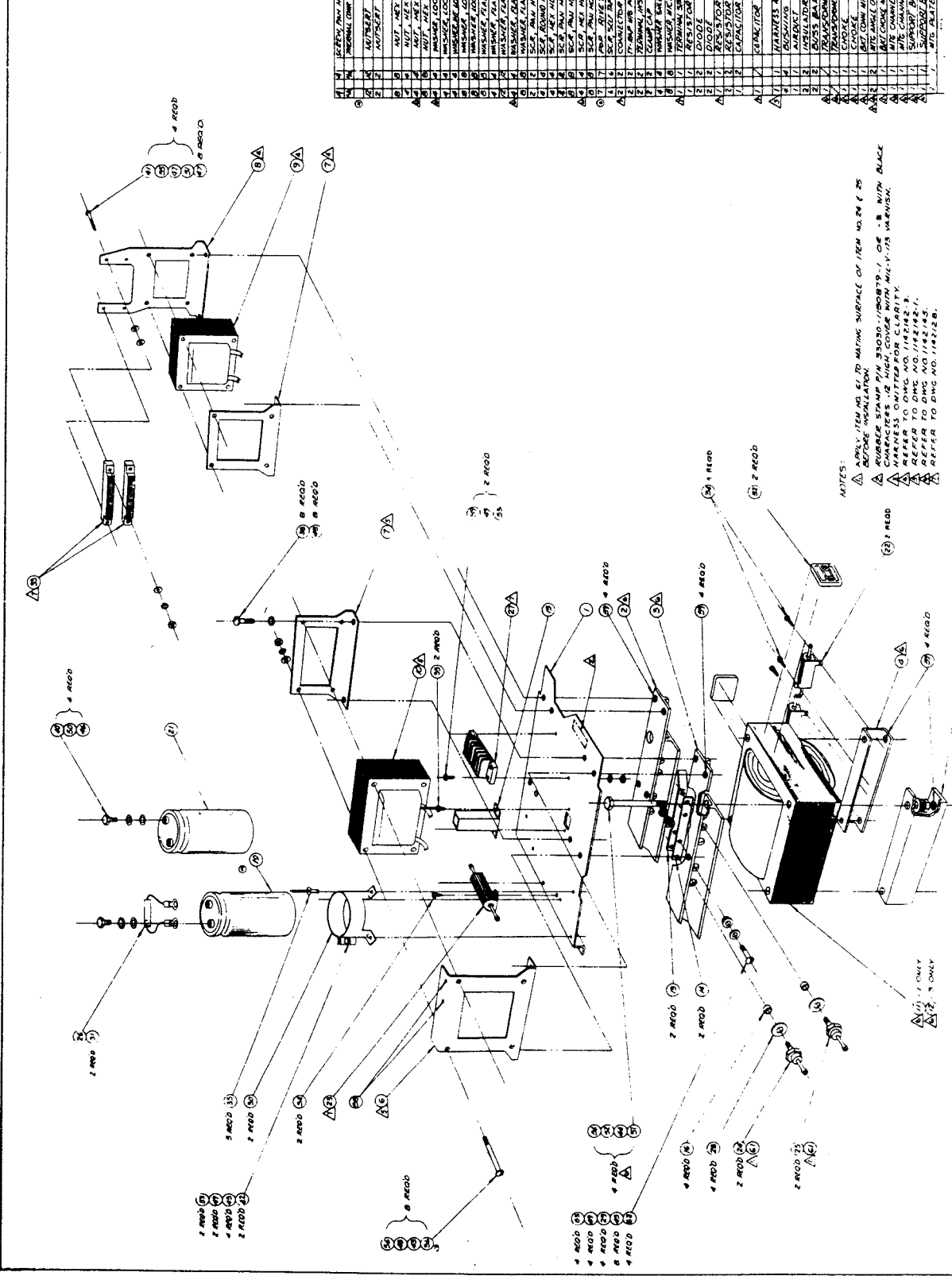
QTY	DESCRIPTION	UNIT	REF. DES.
1	WASHER FLAT		
4	SCREW 1/4x1/2		
4	WASHER FLAT		
2	NUT SELF LOCK		
2	SCREW 1/4x1/2		
4	SCREW PAN HD		
2	NUT HEX		
2	SCREW PAN HD		
1	GROOVE PIN		
1	KEY		
1	CATCH		
1	SWITCH		
1	HINGE		
1	LOCK CAM		
1	DANGER PLATE		
1	HANDLE		
1	HANDLE SPRINGER		
1	SWITCH RET. PIN		
1	SHUTTER ASY		
1	MINI-MODE ASY		
1	FRONT BULKHEAD		

QTY	DESCRIPTION	UNIT	REF. DES.
1	WASHER FLAT		
4	SCREW 1/4x1/2		
4	WASHER FLAT		
2	NUT SELF LOCK		
2	SCREW 1/4x1/2		
4	SCREW PAN HD		
2	NUT HEX		
2	SCREW PAN HD		
1	GROOVE PIN		
1	KEY		
1	CATCH		
1	SWITCH		
1	HINGE		
1	LOCK CAM		
1	DANGER PLATE		
1	HANDLE		
1	HANDLE SPRINGER		
1	SWITCH RET. PIN		
1	SHUTTER ASY		
1	MINI-MODE ASY		
1	FRONT BULKHEAD		

QTY	DESCRIPTION	UNIT	REF. DES.
1	WASHER FLAT		
4	SCREW 1/4x1/2		
4	WASHER FLAT		
2	NUT SELF LOCK		
2	SCREW 1/4x1/2		
4	SCREW PAN HD		
2	NUT HEX		
2	SCREW PAN HD		
1	GROOVE PIN		
1	KEY		
1	CATCH		
1	SWITCH		
1	HINGE		
1	LOCK CAM		
1	DANGER PLATE		
1	HANDLE		
1	HANDLE SPRINGER		
1	SWITCH RET. PIN		
1	SHUTTER ASY		
1	MINI-MODE ASY		
1	FRONT BULKHEAD		

QTY	DESCRIPTION	UNIT	REF. DES.
1	WASHER FLAT		
4	SCREW 1/4x1/2		
4	WASHER FLAT		
2	NUT SELF LOCK		
2	SCREW 1/4x1/2		
4	SCREW PAN HD		
2	NUT HEX		
2	SCREW PAN HD		
1	GROOVE PIN		
1	KEY		
1	CATCH		
1	SWITCH		
1	HINGE		
1	LOCK CAM		
1	DANGER PLATE		
1	HANDLE		
1	HANDLE SPRINGER		
1	SWITCH RET. PIN		
1	SHUTTER ASY		
1	MINI-MODE ASY		
1	FRONT BULKHEAD		

REV	DATE	BY	DESCRIPTION
1	11/10/59	...	...
2	...	...	...
3	...	...	...
4	...	...	...
5	...	...	...
6	...	...	...
7	...	...	...
8	...	...	...
9	...	...	...
10	...	...	...



REV	DATE	BY	DESCRIPTION
1	11/10/59	...	...
2	...	...	...
3	...	...	...
4	...	...	...
5	...	...	...
6	...	...	...
7	...	...	...
8	...	...	...
9	...	...	...
10	...	...	...

NOTES:  
 Δ APPLY ITEM NO. 67 TO MATING SURFACE OF ITEM NO. 24 & 25 BEFORE INSTALLATION.  
 Δ RUBBER STAMP P/N 33030-1150879-1, OR "B" WITH BLACK MARKING, TO BE APPLIED TO ITEM NO. 1150879-1.  
 Δ HARNESS OMITTED FOR CLARITY.  
 Δ REFER TO DWG NO. 1150879-1.  
 Δ REFER TO DWG NO. 1150879-1.  
 Δ REFER TO DWG NO. 1150879-1.  
 Δ REFER TO DWG NO. 1150879-1.

POWER SUPPLY ASSEMBLY  
 1150879 A



